

**Northern Territory  
Department of Justice**

**Correctional Services**



**Statistical Summary  
2004 - 2005**



Northern Territory Department of Justice

Correctional Services Statistical Summary

2004 - 2005

© Northern Territory of Australia, Office of Crime Prevention, 2005  
All rights reserved.

Whilst all reasonable care has been taken in the preparation of this report, the Northern Territory of Australia, its employees and agents do not warrant or represent that the report is free from errors or omission, or that it is exhaustive. No liability is assumed for any errors or omissions.

Produced by:

Office of Crime Prevention  
GPO Box 1722  
DARWIN NT 0801  
Telephone: (08) 8935 7437  
E-mail: [crime.prevention@nt.gov.au](mailto:crime.prevention@nt.gov.au)  
Website: [www.crimeprevention.nt.gov.au](http://www.crimeprevention.nt.gov.au)

ntcrime  
prevention

The logo for ntc crime prevention features the text 'ntcrime' in a smaller font above 'prevention' in a larger font. A curved line underlines the text, and below it is the tagline 'BUILDING A SAFER TERRITORY' in all caps.

BUILDING A SAFER TERRITORY

The logo for the Northern Territory Government consists of a stylized flower or star shape made of small circles.

**Northern Territory Government**  
Department of Justice



## CONTENTS

STATISTICAL SUMMARY .....	1
Background .....	1
Caseload Overview .....	1
Adult Prisoners .....	2
Population .....	2
Receptions .....	2
Imprisonment Rates .....	2
Sentenced Prisoners .....	3
Offence .....	3
Last Known Address .....	3
Indigenous Status .....	3
Age .....	4
Sex .....	4
Marital Status .....	5
Juvenile Detainees .....	6
Population .....	6
Receptions and Sentence Status .....	6
Offence .....	7
Indigenous Status .....	7
Age .....	7
Sex .....	7
Foreign Nationals and Federal Prisoners .....	8
Adult Prisoners .....	8
Juvenile Detainees .....	8
Community Corrections Programs .....	9
Program Caseload .....	9
Commencements .....	9
Offence .....	9
Indigenous Status .....	9
Age .....	9
Sex .....	9
OVERVIEW OF PERFORMANCE .....	10
Performance .....	10
SUPPORTING TABLES .....	13
Census of Adult Prisoners as at 30 June 2005 .....	13
Adult Prisoner and Juvenile Detainee Turnover During 2004-05 .....	17
Adult Prisoners During 2004-05 .....	18
Juvenile Detainees During 2004-05 .....	23
Community Corrections Caseload as at 30 June 2005 .....	26
Community Corrections Turnover During 2004-05 .....	28

## T A B L E S

Table 1 Summary of adult prisoner numbers in 2004-05 by correctional institution. ....	2
Table 2 Summary of juvenile detainee numbers in 2004-05 by detention centre. ....	6
Table 3 Summary of estimated daily average foreign prisoners and detainees from 1995-96 to 2004-05. ....	8
Table 4 National Performance Indicators. ....	11
Table 5 Census of prisoners by prison, sentence status, Indigenous status and sex. ....	13
Table 6 Census of prisoners by prison and employment status at time of reception. ....	13
Table 7 Census of prisoners by prison and age. ....	13
Table 8 Census of prisoners by prison and marital status. ....	14
Table 9 Census of sentenced prisoners by prison and aggregate sentence. ....	14
Table 10 Census of prisoners by prison, last known address and Indigenous status. ....	14
Table 11 Census of prisoners by offence and sentence status. ....	15
Table 12 Census of prisoners by prison, Indigenous status and type of sentence. ....	15
Table 13 Adult and juvenile turnover summary. ....	17
Table 14 Adult escapes and juvenile absconds (incidents and persons). ....	17
Table 15 Adult and juvenile receptions by sentence status, Indigenous status and sex. ....	17
Table 16 Adult monthly daily average by prison and sentence status. ....	18
Table 17 Adult exits by prison, release reason and Indigenous status. ....	18
Table 18 Distinct adults received by prison, age, sex and Indigenous status. ....	19
Table 19 Distinct adults received by institution, place of origin, and Indigenous status. ....	20
Table 20 Adult sentenced episode commencements by aggregate sentence, offence and Indigenous status. ....	21
Table 21 Adult sentenced episodes held by aggregate sentence, offence and Indigenous status. ....	22
Table 22 Juvenile monthly daily average by sentence status. ....	23
Table 23 Juvenile exits by institution, release reason and Indigenous status. ....	23
Table 24 Juvenile orders and distinct episode commencements by Indigenous status and sex. ....	23
Table 25 Distinct juveniles received by last known address, age and Indigenous status. ....	24
Table 26 Juvenile episode commencements by offence. ....	25
Table 27 Community Corrections adult program caseload by office, Indigenous status and program. ....	26
Table 28 Community Corrections juvenile program caseload by office, Indigenous status and program. ....	27
Table 29 Conditional liberty program completions. ....	28
Table 30 Conditional liberty program commencements by Indigenous status and sex. ....	28
Table 31 Conditional liberty distinct persons commencing by Indigenous status and sex. ....	28
Table 32 Conditional liberty order commencements by office, program and age status. ....	28
Table 33 Community work order commencements by offence and age. ....	29
Table 34 Home detention order commencements by offence and age. ....	29
Table 35 Releases to parole by offence and age. ....	30
Table 36 Probation order commencements by offence and age. ....	30

## FIGURES

Figure 1 Northern Territory Correctional Services caseload as at 30 June 2005.....	1
Figure 2 Yearly daily average adult prisoners from 1988-89 to 2004-05.....	2
Figure 3 Estimated adult imprisonment rates by jurisdiction, 2004-05.....	3
Figure 4 Estimated adult Indigenous imprisonment rates by jurisdiction, 2004-05.....	4
Figure 5 Estimated adult female imprisonment rates, 1999-00 to 2004-05.....	5
Figure 6 Yearly daily average juvenile detainees from 1988-89 to 2004-05.....	6
Figure 7 Community Corrections program caseload from 1998 to 2005.....	9





# STATISTICAL SUMMARY

## BACKGROUND

Take care when comparing these statistics with those quoted in other publications. Different data collection timeframes may have been used, or information may have been obtained from different sources, or using different counting methods.

The information provided in this statistical supplement relating to the Australian Bureau of Statistics (ABS) Prisoner Census is from the preliminary data supplied to ABS for the NT, some differences may occur between figures in this report and the final figures published by the ABS.

The basis for reporting on offences is the Most Serious Offence (MSO) for the episode as recorded in the Integrated Justice Information System (IJIS).

The values quoted for components of a daily average may not sum to the total daily average. This is due to rounding errors inherent in the display format chosen for the daily averages.

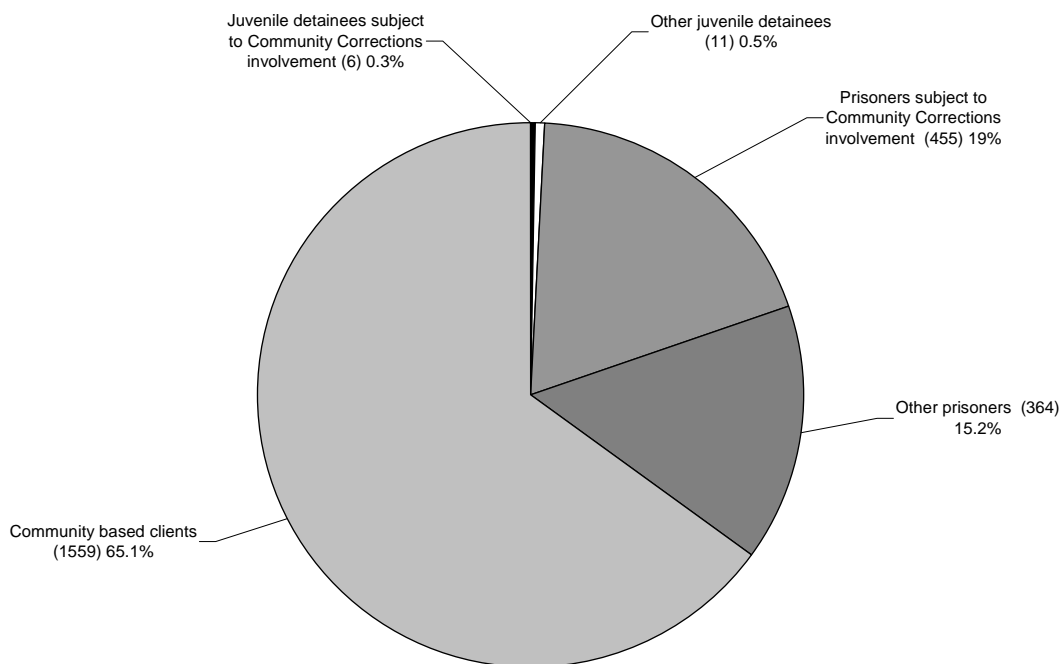
New data extraction procedures and counting rules used for processing Community Corrections data were implemented during the 2001-02 reporting process. Hence, some of the Community Correction figures published prior to the 2001-02 financial year are not directly comparable to this year's figures.

A new approach was adopted during 2002-03 to reporting the aggregate sentences of persons in custody. Hence, some of the aggregate sentence length figures published prior to the 2002-03 financial year are not directly comparable to this year's figures.

## CASELOAD OVERVIEW

On 30 June 2005, the Northern Territory Correctional Services caseload was 2,395 distinct people, either undertaking a community based program or in custody in a correctional institution. This is estimated as 1131 per 100,000<sup>1</sup> persons in the Northern Territory.

**Figure 1 Northern Territory Correctional Services caseload as at 30 June 2005.**



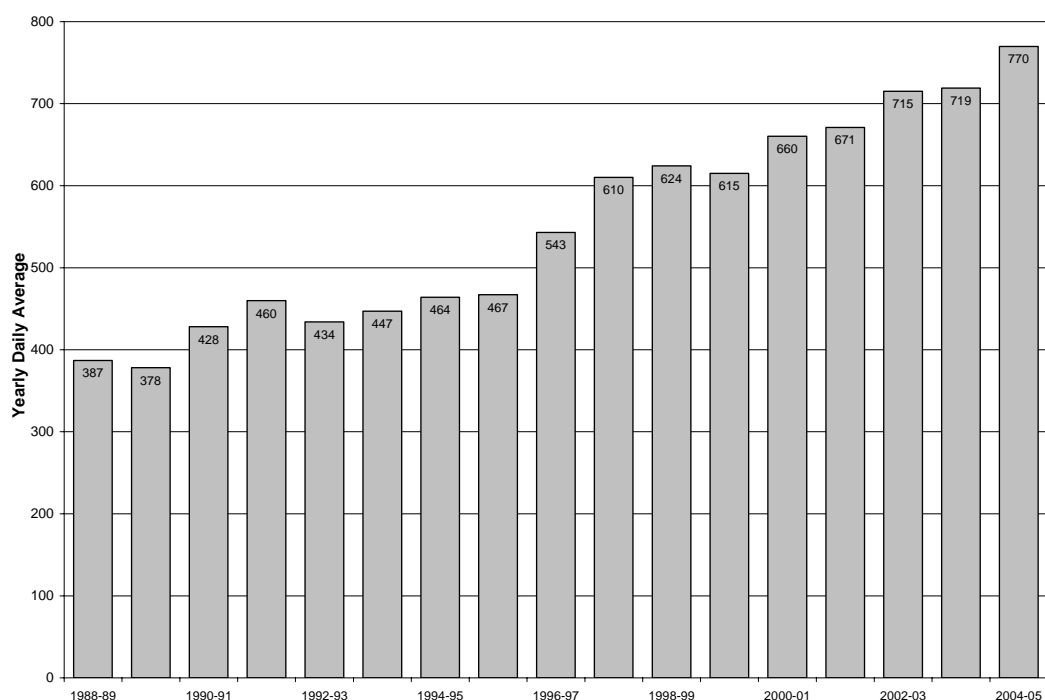
<sup>1</sup> The projected NT population as at 30<sup>th</sup> June 2005 was obtained from the Australian Bureau of Statistics publication (3222.7) – Population Projections, Northern Territory; 1999 to 2021.

## ADULT PRISONERS

### Population

The daily average number of prisoners held in adult correctional institutions in the Northern Territory in 2004-05 was 770, which was 7% higher than the previous year (719). The following figure shows the prison population has generally been increasing over the past 17 years, with a marked increase during the period 1995-96 to 1997-98.

**Figure 2 Yearly daily average adult prisoners from 1988-89 to 2004-05.**



The minimum and maximum number of prisoners that were held in custody in an adult correctional institution in the Northern Territory on any day during 2004-05 was 687 and 846 respectively. The average occupancy level of the combined prisons was 96% during the year.

**Table 1 Summary of adult prisoner numbers in 2004-05 by correctional institution.**

Correctional Institution	Minimum	Maximum	Daily Average	Design Capacity	Average Occupancy Level
Alice Springs Correctional Centre	334	399	373	400	93%
Darwin Correctional Centre	339	461	396	400	99%
<b>All Centres</b>	<b>687</b>	<b>846</b>	<b>770</b>	<b>800</b>	<b>96%</b>

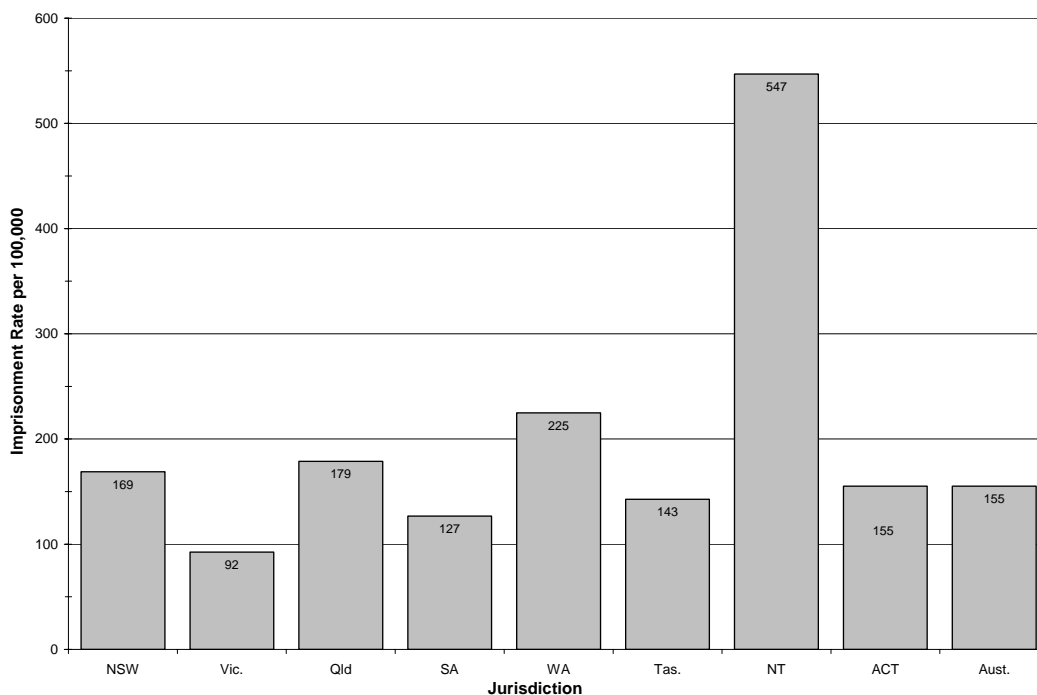
### Receptions

There were 2,419 receptions into Northern Territory adult correctional institutions during 2004-05, an increase of 13% from the previous year. These receptions involved 1,918 distinct persons.

### Imprisonment Rates

The rate of imprisonment<sup>2</sup> of adults in the Northern Territory for 2004-05 is estimated to be 547 per 100,000 adults, which continues to be significantly higher than in other jurisdictions (see Figure below). For comparison, the national rate of imprisonment is estimated as 155 per 100,000 adults.

<sup>2</sup> Derived from the Australian Bureau of Statistics publication (4512.0) – Corrective Services Australia, June quarter 2005.

**Figure 3 Estimated adult imprisonment rates by jurisdiction, 2004-05.**

Estimates of imprisonment rate per 100,000 adult population based on ABS Corrective Services Australia (4512.0).

### Sentenced Prisoners

On 30 June 2005, sentenced prisoners represented 84% of those in custody, of these 42% had a sentence of less than 12 months.

Sentenced prisoners represented 64% of the receptions and 81% of the daily average number of prisoners in adult correctional institutions during 2004-05.

The average sentence length for sentenced prisoners received into custody (excluding prisoners with life sentences) during the period was 264 days. The median sentence length was 120 days, a reduction of 1% from last year's median of 121 days.

The average sentence length for sentenced prisoners held in custody (excluding prisoners with life sentences) during the period was 472 days. The median sentence length was 162 days, a reduction of 11% from last year's median of 182 days.

The average sentence length for sentenced Indigenous prisoners held in custody was 408 days.

### Offence

The most common offence<sup>3</sup> for prisoners held in custody on 30 June 2005 was assault (39% of prisoners), followed by sexual assault (11% of prisoners).

### Last Known Address

The Darwin region continues to be the most common last known address for prisoners in custody. As at 30 June 2005, 29% of prisoners in custody (235) had a last known address in that region.

### Indigenous Status

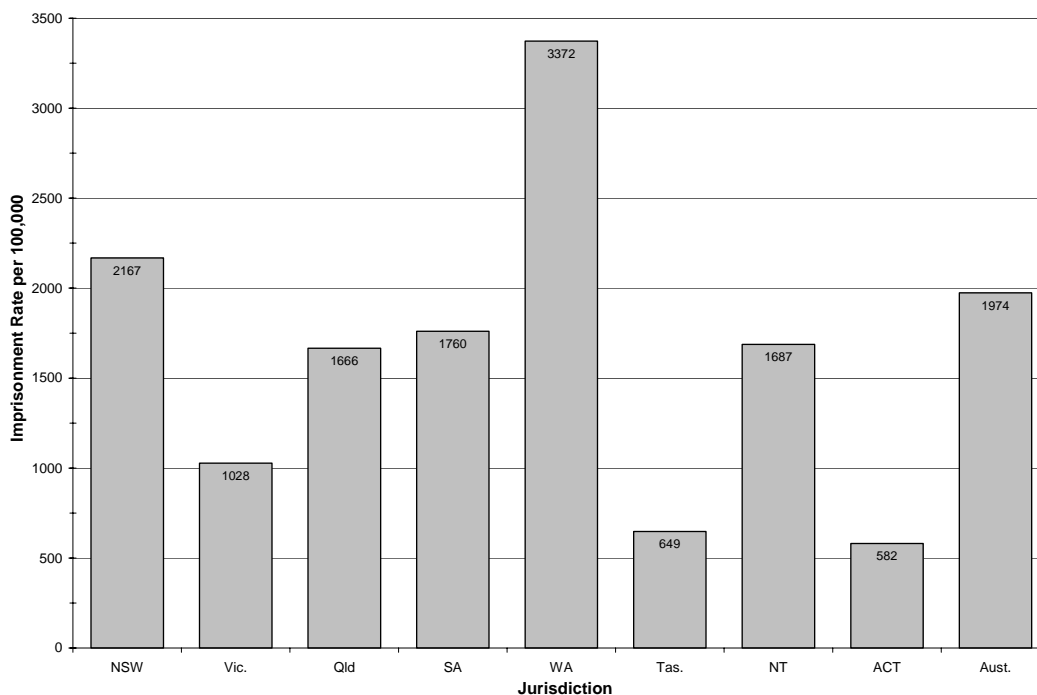
The daily average number of Indigenous prisoners in custody during 2004-05 was 600, which represented 78% of the total daily average.

On 30 June 2005, there were 662 Indigenous prisoners in custody in an adult correctional institution in the Northern Territory, which represented 81% of total prisoners.

<sup>3</sup> The most serious offence for the custody episode as recorded in IJIS.

The figure below shows the estimated rate of imprisonment of Indigenous adults in the Northern Territory was 1,687 persons per 100,000 Indigenous adults, which is less than the national average of 1,974 persons per 100,000 Indigenous adults.

**Figure 4 Estimated adult Indigenous imprisonment rates by jurisdiction, 2004-05.**



*Estimates of imprisonment rate per 100,000 adult Indigenous population based on ABS Corrective Services Australia (4512.0).*

The estimated Northern Territory non-Indigenous rate of imprisonment was 158 per 100,000 non-Indigenous adults<sup>4</sup>.

## Age

The average age of prisoners received into custody during 2004-05 was 31 years. There were eight prisoners received into custody who were aged 60 years or older, with the oldest prisoner aged 76 at reception.

## Sex

On 30 June 2005, there were 26 female prisoners in custody, which represented 3% of the Northern Territory prison population. During 2004-05, there were 68 sentenced female receptions, a 31% increase compared with the previous year (52).

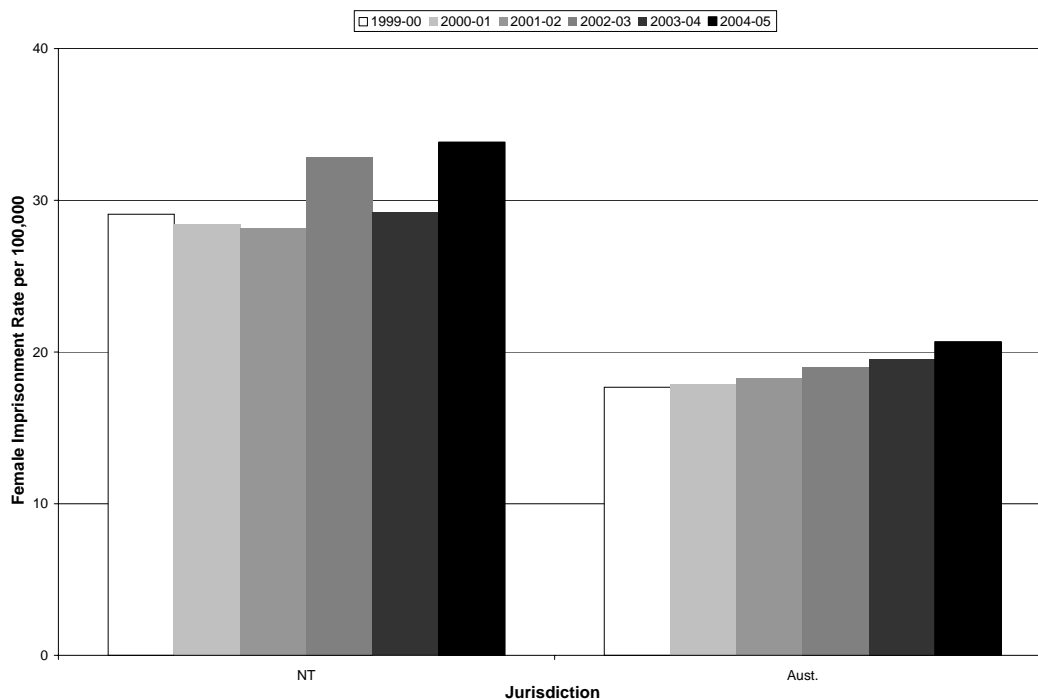
The average daily number of adult females in custody during 2004-05 was 22, which was higher than the previous year (19).

The estimated Northern Territory female imprisonment rate for 2004-05 was 34 per 100,000 adult females. The estimated Australian rate for the same period was 21 per 100,000 adult females. During 2004-05, the average daily proportion of females in the Northern Territory prison population was 2.9%, which is noticeably lower than the national average of 6.8% for the same period<sup>5</sup>.

<sup>4</sup> The estimate is based on prisoner data for 2004-05 and is for non-Indigenous prisoners excluding people smugglers. Average non-Indigenous adult population estimates were derived from rates used in ABS (4512.0) Corrective Services Australia – June Quarter 2005.

<sup>5</sup> Estimates based on ABS Corrective Services Australia – June Quarter 2005; figures for 2004-05.

**Figure 5 Estimated adult female imprisonment rates, 1999-00 to 2004-05.**



*Estimates of imprisonment rate per 100,000 adult female population based on ABS Corrective Services Australia (4512.0).*

### **Marital Status**

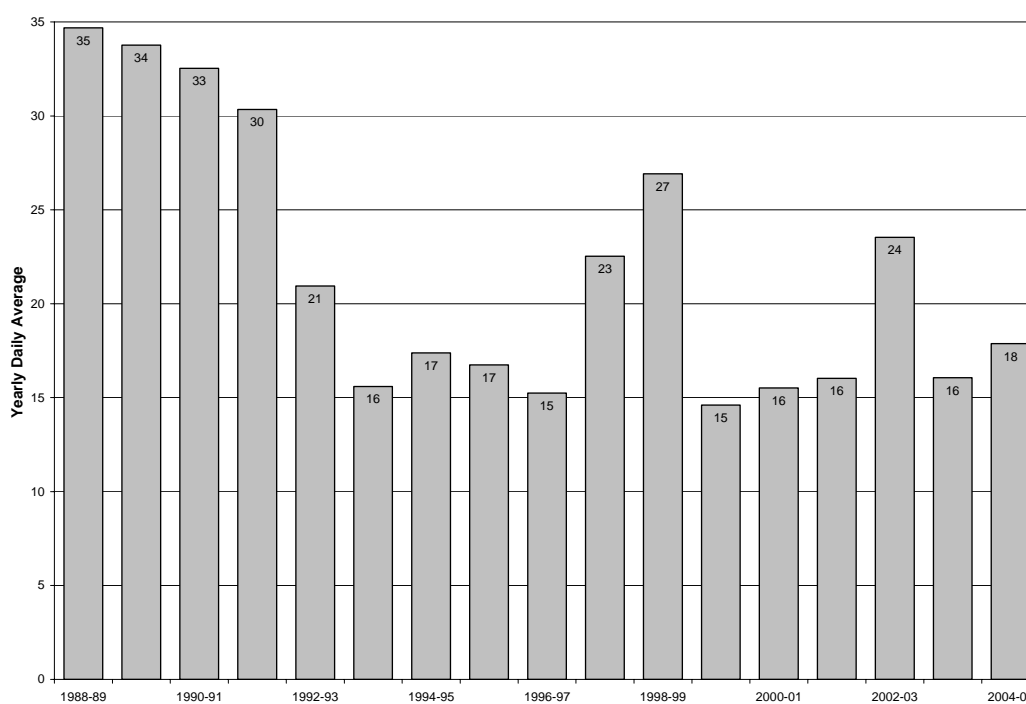
On 30 June 2005, 48% of the prisoners had stated at the time of their reception into custody, that they were married.

## JUVENILE DETAINEES

### Population

As shown in the figure below, there has been considerable fluctuation in the annual daily average number of detainees in custody in juvenile detention centres over past years.

**Figure 6 Yearly daily average juvenile detainees from 1988-89 to 2004-05.**



**Note:** Prior to June 2000, 17 year olds were classified as adults.

The daily average number of detainees held in custody during 2004-05 was 18, which is higher than the previous year (16).

The estimated detention rate for the Northern Territory is 71 per 100,000 juveniles aged between 10 and 17 years<sup>6</sup>.

The minimum number of detainees held in custody on any day during the year was nine and the maximum was 33.

**Table 2 Summary of juvenile detainee numbers in 2004-05 by detention centre.**

Juvenile Detention Centre	Minimum	Maximum	Daily Average	Design Capacity
Don Dale Juvenile Detention Centre	8	32	17	38
Wildman River Wilderness Work Camp	0	0	0	0
Alice Springs Juvenile Holding Centre	0	7	1	10
<b>All Centres</b>	<b>9</b>	<b>33</b>	<b>18</b>	<b>48</b>

**Note:** The capacity of the Don Dale Detention Centre was increased to 38 (from 25) in November 2004. The Wildman River Wilderness Work Camp was closed prior to 2004-05.

### Receptions and Sentence Status

There were 208 receptions into juvenile detention centres in the Northern Territory in 2004-05, which involved 118 distinct juveniles.

Most juveniles are unsentenced at the time of reception into a detention centre. However, during an episode a detainee may commence several types of orders. Thus during the period, there were 226

<sup>6</sup> Ten to seventeen year old population estimates were derived from ABS Estimated Resident Population (see ABS publication 3201.0). The estimates include persons from 10 years old, up to but not including person 18 years old.

distinct order commencements consisting of 178 remand order commencements (including holding orders), 47 detention order commencements and 1 fine default order commencement.

The daily average number of sentenced detainees during 2004-05 was eight.

### **Offence**

The most common offences<sup>7</sup> for juveniles received into detention during 2004-05 were property offences (58% of all receptions).

### **Indigenous Status**

During 2004-05, 187 (90%) of the 208 juvenile receptions involved Indigenous detainees.

### **Age**

Of the 118 distinct detainees who commenced at least one episode in a juvenile detention centre during 2004-05, most (73%) were in the 15 to 17 year old age group at first reception.

### **Sex**

Most of the detainees received into a juvenile detention centre were males. Only five (2%) of the 208 receptions were for female detainees.

---

<sup>7</sup> Most serious offence as recorded in IJIS.

## FOREIGN NATIONALS AND FEDERAL PRISONERS

Foreign nationals are often held in Northern Territory correctional institutions and are usually included in the counts as non-Indigenous. The yearly daily average number of foreign nationals reached a peak of 145 in 2000-01.

Between 1999-00 and 2002-03, the majority of foreign nationals held in Northern Territory correctional institutions were classified as people smugglers. People smugglers are non-Australian citizens in custody for federal 'people smuggling' offences<sup>8</sup>. There was a rapid increase in the number of receptions of people smugglers during the 1999-00 financial year. During the period 1999-00 to 2001-02, people smugglers represented a significant proportion of the total custody population and a large proportion of the non-Indigenous custody population. The yearly daily average number of people smugglers reached a peak of 122 in 2000-01. Since then it has been decreasing.

**Table 3 Summary of estimated daily average foreign prisoners and detainees from 1995-96 to 2004-05.**

Year/Quarter	Foreign Citizens			Total Foreign Citizens	% of All Prisoners and Detainees
	Offence Type				
	Federal		Non-Federal		
	People Smugglers	Other Federal			
1995-96	1	13	16	30	6%
1996-97	3	10	19	32	6%
1997-98	2	11	26	39	6%
1998-99	2	14	25	41	6%
1999-00	71	12	28	112	18%
2000-01	122	12	12	145	21%
2001-02	121	14	6	141	20%
2002-03	40	14	5	59	8%
2003-04	6	12	8	26	3%
2004-05	2	26	8	37	5%
Sep. qtr 2004	3	12	8		3%
Dec. qtr 2004	3	25	10		5%
Mar. qtr 2005	2	36	7		5%
Jun. qtr 2005	1	31	8		5%

### Adult Prisoners

On 30 June 2005, there were 26 foreign nationals in custody in an adult correctional institution, representing 3% of the total adult prison population. Of these, two were 'people smugglers', one of which was sentenced.

During 2004-05, 186 foreign national adults were received into a correctional institution. This represents a 54% increase from the previous year (121).

### Juvenile Detainees

On 30 June 2005, there were no foreign national juveniles in custody in a correctional institution.

During 2004-05, no foreign national juveniles were received into a correctional institution.

<sup>8</sup> Most serious offence as recorded in IJIS.

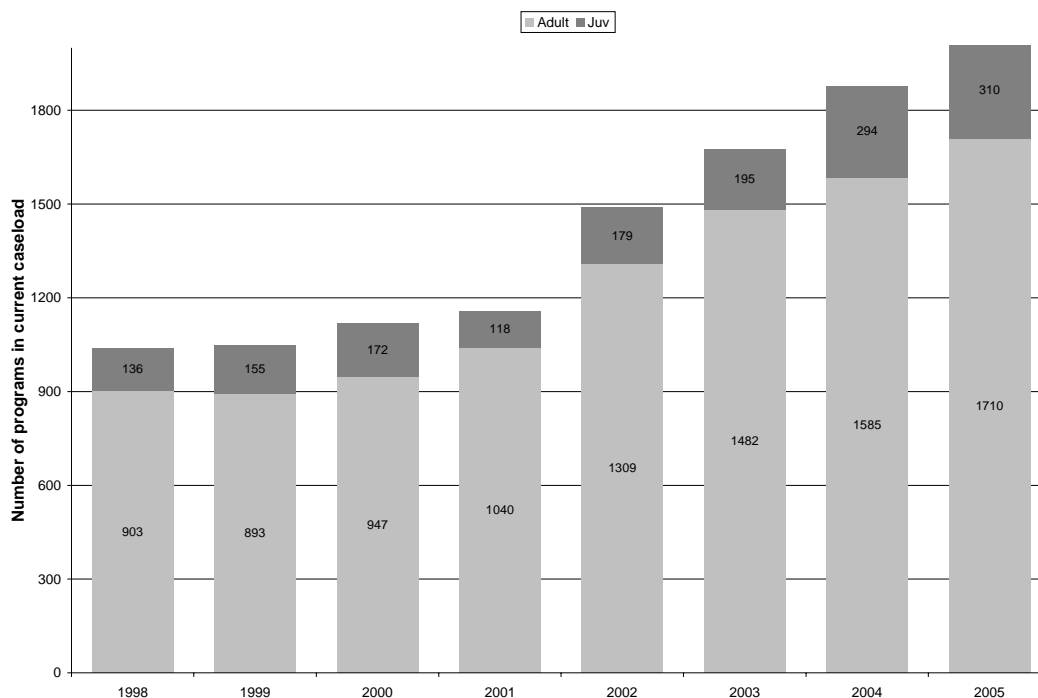


## COMMUNITY CORRECTIONS PROGRAMS

### Program Caseload

As at 30 June 2005, the Community Corrections program caseload consisted of 1,710 adult programs and 310 juvenile programs. Of these, 1,559 programs were for conditional liberty orders. The remaining 461 programs were for clients in custody and were pre-parole or pre-probation programs, or life-sentenced prisoners who were receiving services from community corrections officers.

**Figure 7 Community Corrections program caseload from 1998 to 2005.**



### Commencements

During 2004-05, there were 1,414 conditional liberty commencements, an increase of 7% from the previous year. Of these, 34% (486) were for community work orders.

### Offence

The most common offence<sup>9</sup> varied according to the type of program. Justice procedures & other offences were the most common type of offence for community work orders and driving offences were most common for home detention program commencements.

### Indigenous Status

Indigenous people represented 79% of the conditional liberty program commencements.

### Age

The majority (1,141 or 81%) of conditional liberty program commencements were for adults. The average and median age for distinct persons who commenced a conditional liberty program during 2004-05 was 26 years and 23 years respectively. The youngest person to commence an order was 12 years and the oldest was 76 years.

### Sex

Ten percent of the conditional liberty program commencements were for females.

<sup>9</sup> Most serious offence as recorded in IJIS.

## OVERVIEW OF PERFORMANCE

This part of the report is committed to reporting the activities and progress of the Division against the five key focus areas, which are described in detail in the Business Plan:

- Containment
- Supervision
- Offender Rehabilitation and Reintegration
- Reparation
- Advice to Sentencing Authorities

## PERFORMANCE

The following table contains information produced by the Steering Committee for the Review of Commonwealth/State Service Provision (SCRCSSP) contained in the 'Report on Government Services, 2005', which compares service delivery performance in Australia. Each jurisdiction provides standard information by which comparisons can be made. For corrective services, performance is categorised according to efficiency or effectiveness. Key focus areas mentioned above are addressed by at least one indicator and a selection of summary indicators are presented in the following table.

The information presented in the following table for other jurisdictions is for 2003-04, which is the most recent period in which this information is available. The Agency uses many of the findings from this exercise to establish benchmarks for its own business planning exercises.

In many instances, the Northern Territory differs from other jurisdictions. These unique characteristics include the small general population of which a high proportion is comprised of Indigenous persons, dispersion of the population and remoteness, which results in higher costs for goods and services and the physical location of the Northern Territory in comparison to other states.

It should also be noted that some of the indicators used in the following table might differ from those used elsewhere in this Annual Report. This may be due to differences between jurisdictions in accrual or cash accounting processes and the exclusion of juvenile justice from the SCRCSSP exercise.

As can be seen, the Northern Territory compares reasonably with other jurisdictions in most of the performance indicators mentioned above. In the past few years, the measure of recidivism has been seen to be a partial measure of the whole justice system, not just correctional system. It is recognised that the rates of recidivism is partially determined by many factors outside the justice system, including education, employment and social conditions. The measures of recidivism used are limited in that they do not consider the types of re-offending, only follow a person within the same jurisdiction in which they completed the original corrections program and do not include any offences which result in an outcome not administered by correctional services (e.g. fines, bonds and suspended sentences).

Table 4 National Performance Indicators.

Performance Indicators	2003-04									2002-03
	NSW	Vic	Qld	WA	SA	Tas	ACT <sup>1</sup>	NT	Aust.	NT
<b>Justice System - Recidivism rate</b>										
Prisoners returning to prison <sup>2</sup>	44.7	na	27.7	44.9	29.7	33.7	na	36.0	na	33.1
Offenders returning to a Community Corrections program <sup>3</sup>	na	na	11.2	19.7	14.7	13.3	na	16.7	na	16.4
<b>Prisons</b>										
<i>Descriptive</i>										
Daily average population	8367	3669	5264	3006	1469	457	181	719	23015	715
Imprisonment rate per 100,000 relevant population <sup>4</sup>	161.4	95.1	179.0	202.5	124.1	126.2	73.7	515.6	150.2	518.6
Useable prison capacity	7941	3590	6207	3288	1359	526	91	800	na	800
<i>Effectiveness</i>										
<i>(containment and supervision)</i>										
Escape rate <sup>6</sup> (per 100 prisoners)										
Open	0.21	1.58	1.48	3.09	0.60	3.16	..	0.67	0.93	1.50
Secure	-	-	-	0.10	0.15	0.28	-	0.18	0.04	-
Death rate by apparent unnatural causes <sup>7</sup>	0.10	0.05	0.09	0.03	0.14	-	-	-	0.08	-
Rate of assaults on:										
Prisoners by prisoners										
Serious Assault	0.74	0.93	0.72	0.50	0.27	0.66	na	0.42	0.69	0.14
Assault	13.57	5.67	5.49	10.11	8.51	15.32	na	12.38	9.67	4.48
Officers by Prisoners										
Serious Assault	-	0.03	0.08	0.13	0.07	-	na	0.56	0.06	-
Assault	1.16	0.76	1.35	2.63	1.50	6.78	na	1.67	1.48	0.56 <sup>5</sup>
<i>(offender care)</i> - Out of cell hours	9.7	11.8	11.7	12.2	9.8	10.3	9.0	8.9	10.8	9.7
<i>(reparation)</i> - Proportion of prisoners employed	75.0	87.3	79.1	92.5	73.7	68.6	..	72.6	80.0	67.8
<i>(rehabilitation)</i> - Proportion of prisoners in education	35.0	38.3	28.5	40.7	38.7	56.5	..	51.3	36.4	28.2 <sup>8</sup>
<i>Efficiency - (resource management)</i>										
% of total utilisation	105.4	102.2	84.8	91.4	108.1	86.9	70.1	89.9	96.7	89.4
Costs per prisoner per day <sup>9,10</sup> (\$)	173.3	162.3	138.7	157.3	167.0	166.5	261.2	155.3	162.2	142.3
<b>Community Supervision</b>										
<i>Descriptive</i>										
Daily average population <sup>11,12</sup>	2425	366	1874	1392	710	91	98	720	7676	935
Community supervision rate per 100,000 relevant population <sup>4</sup>	341.3	194.4	418.7	358.2	589.7	249.0	535.6	678.2	343.9	678.2
<i>Effectiveness</i>										
<i>(containment and supervision)</i> - % of people who successfully completed a community supervision order										
<i>(offender care)</i> - No indicator collected*	-	-	-	-	-	-	-	-	-	-
<i>(reparation)</i> Ratio of ordered to worked hours	na	na	1.7	2.1	2.0	na	2.1	2.3	na	1.9
<i>(rehabilitation)</i> - Proportion of eligible offenders taking personal development	na	na	na	59.0	na	na	na	41.4	na	51.8
<i>Efficiency - (resource management)</i>										
Costs per offender per day <sup>9,10</sup> (\$)	9.6	11.0	7.6	18.0	9.4	9.4	15.1	16.7	10.4	14.2
Offender to operational staff ratio	30.7	25.6	37.2	30.6	34.3	30.8	25.2	27.3	31.1	26.7

na – not available

nc – not collected

.. – not applicable

- – nil or rounded to 0

\* – No information relating to offender care has been collected relating to community supervision.

**Notes for Table 4:**

1. Prisoners from the ACT are held in NSW. The information provided only relates to remandees.
2. Prisoners who are released to freedom and return to a correctional centre in the same jurisdiction within 2 years of their release.
3. Offenders returning to a community corrections program in the same jurisdiction within 2 years of them successfully completing a program.
4. Relevant population refers to all person aged 18 years and over.
5. The 2002-03 rate of assaults on officers by prisoners has been revised to reflect the correct rate.
6. Per 100 prisoners and refers to prisoners, not incidents. Rate is determined by the number of prisoners divided by prisoner daily average (open or secure).
7. Per 100 prisoners and is determined by the number of deaths divided by the prisoner daily average.
8. As at 30 June for persons serving 3 months or more.
9. Includes direct employee expenses (excluding payroll tax and long service leave) and operational costs, apportioned indirect costs for corporate support services provided by umbrella and expenditure incurred by other departments on our behalf.
10. Capital costs not included.
11. Community supervision counts distinct persons not orders and for the Northern Territory, home detention clients are included in this group.
12. Northern Territory figures do not include clients whose order has been in suspense for three years or more.

## SUPPORTING TABLES

### CENSUS OF ADULT PRISONERS AS AT 30 JUNE 2005

Table 5 Census of prisoners by prison, sentence status, Indigenous status and sex.

Prison/Sentence Status	Indigenous		Non-Indigenous		All		Total 2005		Total 2004	
	Male	Female	Male	Female	Male	Female	Number	% of Total	Number	% of Total
<b>Alice Springs Correctional Centre</b>										
Sentenced	278	3	42	0	320	3	323		294	
Unsentenced	34	2	5	0	39	2	41		39	
<b>Total</b>	312	5	47	0	359	5	364	44.4%	333	46.5%
<b>Darwin Correctional Centre</b>										
Sentenced	267	13	79	3	346	16	362		293	
Unsentenced	61	4	27	1	88	5	93		90	
<b>Total</b>	328	17	106	4	434	21	455	55.6%	383	53.5%
<b>Total 30 June 2005</b>										
<b>Sentenced</b>	545	16	121	3	666	19	685			
<b>Unsentenced</b>	95	6	32	1	127	7	134			
<b>Total</b>	640	22	153	4	793	26	819	100.0%		
<b>Total 30 June 2004</b>										
Sentenced	456	3	121	7	577	10			587	
Unsentenced	90	6	33	0	123	6			129	
<b>Total</b>	546	9	154	7	700	16			716	100%

**Sentenced** – Includes prisoners detained in custody at the Administrator's pleasure and persons in custody for fine default.

- There were 14% more prisoners in custody in Northern Territory correctional institutions on 30 June 2005 than for the same day last year.
- Males represented 97% of the prisoners on 30 June 2005.
- On 30 June 2005, 84% of prisoners were sentenced.
- Indigenous prisoners represented 81% of the total prison population on the night of 30 June 2005.

Table 6 Census of prisoners by prison and employment status at time of reception.

Prison	Employment Status				Total	
	Employed	Unemployed	Other	Not Stated	2005	2004
Alice Springs Correctional Centre	65	291	8	0	364	333
Darwin Correctional Centre	99	330	23	3	455	383
<b>Total 30 June 2005</b>	164	621	31	3	819	
<b>Total 30 June 2004</b>	146	541	28	1		716

**Other** – Includes students, pensioners, and home duties.

- On 30 June 2005, 76% of prisoners held in custody indicated that they were unemployed at time of reception.

Table 7 Census of prisoners by prison and age.

Prison	Age Group (years)							Total	
	<18	18-19	20-29	30-39	40-49	50-59	60+	2005	2004
Alice Springs Correctional Centre	0	12	141	134	60	14	3	364	333
Darwin Correctional Centre	0	24	167	156	90	14	4	455	383
<b>Total 30 June 2005</b>	0	36	308	290	150	28	7	819	
<b>Total 30 June 2004</b>	0	33	271	246	133	26	7		716

- On 30 June 2005, 7 prisoners aged 60 years or more were in custody, of which the eldest was 70 years old.
- On 30 June 2005, 73% of prisoners held in custody were between 20 and 39 years of age.

**Table 8 Census of prisoners by prison and marital status.**

Prison	Marital Status					Total	
	Never Married	Married	Separated Divorced	Widowed	Not Stated	2005	2004
Alice Springs Correctional Centre	155	183	23	3	0	364	333
Darwin Correctional Centre	222	209	22	1	1	455	383
<b>Total 30 June 2005</b>	<b>377</b>	<b>392</b>	<b>45</b>	<b>4</b>	<b>1</b>	<b>819</b>	
Total 30 June 2004	332	323	57	4	0		716

- On 30 June 2005, 48% of prisoners held in custody stated at the time of their reception that they were married.

**Table 9 Census of sentenced prisoners by prison and aggregate sentence.**

Prison	Aggregate Sentence									Total		
	Months			Years			Life			Number	Days	
	<1	1<3	3<6	6<12	1<2	2<5	5+	Other	Life		Mean	Median
Alice Springs Correctional Centre	5	21	44	63	39	62	73	1	15	323	1108	515
Darwin Correctional Centre	5	24	45	81	60	71	53	3	20	362	936	448
<b>Total 30 June 2005</b>	<b>10</b>	<b>45</b>	<b>89</b>	<b>144</b>	<b>99</b>	<b>133</b>	<b>126</b>	<b>4</b>	<b>35</b>	<b>685</b>	1018	456
Total 30 June 2004	5	53	63	94	104	118	111	5	34	587	1083	542

**Aggregate sentence** – The longest period that the offender may be detained under sentence in the current episode.

**Other** – Includes prisoners detained at the Administrator's pleasure or indefinite sentences subject to Judicial Review.

**Days (Mean, Median)** – Does not include indeterminate sentences (Life, Administrator's Pleasure and indefinite sentence).

- There was a 17% increase in the number of sentenced prisoners held on 30 June 2005 compared with 30 June 2004.
- On 30 June 2005, 24% of the sentenced prisoners held in custody had an aggregate sentence of five years or longer (including life sentences).
- There was a 53% increase in the number of prisoners with aggregate sentences of between 6 months and less than 12 months on 30 June 2005, compared with the same date of the previous year.
- The median aggregate sentence of prisoners held in Alice Springs Correctional Centre decreased by 29% from the same time last year.

**Table 10 Census of prisoners by prison, last known address and Indigenous status.**

Last Known Address	Darwin Correctional Centre		Alice Springs Correctional Centre		All		Total	
	Indigenous	Non-Indigenous	Indigenous	Non-Indigenous	Indigenous	Non-Indigenous	2005	2004
Alice Springs Urban	5	2	107	14	112	16	128	121
Alice Springs Rural	0	0	35	0	35	0	35	35
Darwin Urban	110	62	18	20	128	82	210	231
Darwin Rural	10	9	3	3	13	12	25	13
Groote Eylandt	25	0	3	1	28	1	29	33
Hermannsburg	1	0	16	0	17	0	17	9
Jabiru	19	1	4	0	23	1	24	18
Katherine Urban	58	2	10	3	68	5	73	51
Katherine Rural	49	3	13	0	62	3	65	40
Nhulunbuy	9	1	1	0	10	1	11	15
Papunya	0	0	15	0	15	0	15	5
Tennant Creek	2	0	60	1	62	1	63	44
Tiwi Islands	9	0	0	0	9	0	9	10
Wadeye	37	0	6	0	43	0	43	31
Yuendumu	0	0	18	0	18	0	18	10
Interstate	4	10	7	3	11	13	24	28
Overseas	0	16	0	0	0	16	16	8
No fixed abode	7	4	1	2	8	6	14	14
<b>Total 30 June 2005</b>	<b>345</b>	<b>110</b>	<b>317</b>	<b>47</b>	<b>662</b>	<b>157</b>	<b>819</b>	
Total 30 June 2004	270	113	285	48	555	161		716

**Last known address** – As recorded in IJIS and aggregated into reporting districts.

- On 30 June 2005, prisoners from the Darwin Urban region represented 26% of the total Northern Territory prison population.

**Table 11 Census of prisoners by offence and sentence status.**

Most Serious Offence	Sentenced		Unsentenced		Total	
	2005	2004	2005	2004	2005	2004
Against the person						
Murder	33	34	10	15	43	49
Attempted murder	1	0	0	1	1	1
Manslaughter	24	20	0	1	24	21
Assault	245	185	78	54	323	239
Sexual assault / offence	79	61	11	9	90	70
Other offences against the person	27	21	2	2	29	23
Robbery						
Armed robbery	9	5	1	1	10	6
Robbery	14	9	1	1	15	10
Property offences						
Break and enter	62	58	9	19	71	77
Fraud and misappropriation	2	6	3	0	5	6
Stealing / receiving / other theft	11	7	2	2	13	9
Illegal use of motor vehicle	10	12	2	1	12	13
Damage property	15	11	2	3	17	14
Against good order						
Justice procedures	27	38	5	1	32	39
Unlawful possession of weapons	4	2	0	1	4	3
Other offences against good order	9	1	0	1	9	2
Drug Offences						
Possession of drugs	4	7	1	2	5	9
Deal/traffic drugs	9	15	0	2	9	17
Manufacture/grow drugs	4	2	0	0	4	2
Driving offences						
Drive under the influence of alcohol	42	18	1	6	43	24
Driving while disqualified	43	64	1	1	44	65
Other driving	5	3	1	1	6	4
Other offences						
People smuggling	1	2	1	2	2	4
Other	5	6	3	3	8	9
<b>Total 30 June 2005</b>	<b>685</b>		<b>134</b>		<b>819</b>	
Total 30 June 2004		587		129		716

**Most serious offence** – As recorded in IJIS.

**Sentenced** – Includes prisoners detained in custody at the Administrator's pleasure and for fine default.

- The most common offence recorded in IJIS for people held in custody on 30 June 2005 was 'assault' which represented 39% of the total prisoner population, an increase from 33% on 30 June 2004.
- The number of prisoners held for 'drive under the influence of alcohol' increased by 79% from the same time last year.

**Table 12 Census of prisoners by prison, Indigenous status and type of sentence.**

Prison	Unsentenced	Sentenced						Total	
		Fine Default	Max-Min	Fixed Term	Parole	Indefinite Other	Life	2005	2004
<b>Alice Springs Correctional Centre</b>									
Indigenous	36	0	167	108	5	1	0	317	285
Non-Indigenous	5	0	25	7	8	0	2	47	48
Total	41	0	192	115	13	1	2	364	333
<b>Darwin Correctional Centre</b>									
Indigenous	65	0	182	87	8	3	0	345	270
Non-Indigenous	28	3	53	14	11	1	0	110	113
Total	93	3	235	101	19	4	0	455	383
<b>Total 30 June 2005</b>									
<b>Indigenous</b>	<b>101</b>	<b>0</b>	<b>349</b>	<b>195</b>	<b>13</b>	<b>4</b>	<b>0</b>	<b>662</b>	
<b>Non-Indigenous</b>	<b>33</b>	<b>3</b>	<b>78</b>	<b>21</b>	<b>19</b>	<b>1</b>	<b>2</b>	<b>157</b>	
<b>Total</b>	<b>134</b>	<b>3</b>	<b>427</b>	<b>216</b>	<b>32</b>	<b>5</b>	<b>2</b>	<b>819</b>	
Total 30 June 2004									
Indigenous	96	0	271	171	14	3	0		555
Non-Indigenous	33	1	81	24	20	2	0		161
Total	129	1	352	195	34	5	0		716

**Fine default** – Those prisoners who are serving a sentence for non-payment of a fine and are subject to no other sentence at the time. Offenders who are serving fine default sentences while on remand are counted as sentenced (fine default) prisoners.

**Max-Min** – Maximum term specified and minimum term or non-parole period set.

**Fixed term** – No post-release follow-up period set.

**Indefinite - Parole** – With the introduction of the Sentencing (Crime of Murder) and Parole Reform Act 2003 in 2004, prisoners formerly sentenced to a mandatory life term can now be considered for release to parole. This new sentence type of Indefinite Parole has been introduced to this table to reflect those 'life with a minimum' prisoners.

**Indefinite - Other** – Includes prisoners detained at the Administrator's pleasure or subject to Judicial Review.

**Note:** 2004 figures for 'Max-Min' have been revised to exclude Life sentences with a minimum term set. These prisoners are now included in the new sentence type 'life with a minimum' (Parole).

- Of those who were unsentenced, 75% were Indigenous.
- Indigenous prisoners comprised 90% of those with fixed term sentences and 82% of those with max-min sentences.
- 'Max-Min' sentences represented the most common type of sentence.



## ADULT PRISONER AND JUVENILE DETAINEE TURNOVER DURING 2004-05

**Table 13 Adult and juvenile turnover summary.**

		Indigenous		Non-Indigenous		Total	
		Male	Female	Male	Female	2004-05	2003-04
Held at 30 June 2004	Adult	548	9	152	7	716	729
	Juvenile	9	0	1	0	10	23
Received during year	Adult	1899	111	389	20	2419	2133
	Juvenile	182	5	21	0	208	183
Juvenile to adult		5	0	0	0	5	6
Released during year	Adult	1812	98	388	23	2321	2152
	Juvenile	170	5	21	0	196	190
Held at 30 June 2005	Adult	640	22	153	4	819	716
	Juvenile	16	0	1	0	17	10

*Juvenile to adult – Juveniles attaining adult status while detained.*

**Note:** Two adult males and one juvenile male who were classified as Indigenous at 30th June 2004 in last year's table have since been re-classified as non-Indigenous.

**Table 14 Adult escapes and juvenile absconds (incidents and persons).**

	Financial Year	Alice Springs Correctional Centre	Darwin Correctional Centre	Juvenile Detention Centres	Total
<b>Incidents</b>	2004-05	2	0	1	3
	2003-04	1	1	0	2
	2002-03	2	0	0	2
	2001-02	2	1	1	4
	2000-01	2	0	0	2
	1999-00	0	0	2	2
	1998-99	0	0	0	0
	1997-98	0	1	1	2
	<b>Persons</b>	2004-05	2	0	1
2003-04		1	1	0	2
2002-03		2	0	0	2
2001-02		2	1	2	5
2000-01		2	0	0	2
1999-00		0	0	2	2
1998-99		0	0	0	0
1997-98		0	1	2	3

**Table 15 Adult and juvenile receptions by sentence status, Indigenous status and sex.**

Institution	Sentenced				Unsentenced				Total	
	Indigenous		Non-Indigenous		Indigenous		Non-Indigenous		2004-05	2003-04
	Female	Male	Female	Male	Female	Male	Female	Male		
<b>Adult Institutions</b>										
Alice Springs Correctional Centre	27	753	5	21	23	262	1	19	1111	974
Darwin Correctional Centre	32	568	4	144	29	316	10	205	1308	1159
<b>Total 2004-05</b>	<b>59</b>	<b>1321</b>	<b>9</b>	<b>165</b>	<b>52</b>	<b>578</b>	<b>11</b>	<b>224</b>	<b>2419</b>	
Total 2003-04	39	1127	13	158	37	582	21	156		2133
<b>Juvenile Institutions</b>										
Alice Springs Juvenile Holding Centre	0	17	0	1	1	59	0	5	83	62
Don Dale Juvenile Detention Centre	0	26	0	4	4	80	0	11	125	121
<b>Total 2004-05</b>	<b>0</b>	<b>43</b>	<b>0</b>	<b>5</b>	<b>5</b>	<b>139</b>	<b>0</b>	<b>16</b>	<b>208</b>	
Total 2003-04	0	24	0	4	4	123	0	28		183
<b>Total 2004-05</b>	<b>59</b>	<b>1364</b>	<b>9</b>	<b>170</b>	<b>57</b>	<b>717</b>	<b>11</b>	<b>240</b>	<b>2627</b>	
Total 2003-04	39	1151	13	162	41	705	21	184		2316

**Sentenced** – If any portion of an episode is sentenced as at the reporting date, then it is classified as a sentenced reception.

- There was a 61% increase in non-Indigenous male adult receptions to Darwin Correctional Centre in 2004-05 compared to the previous year.

## ADULT PRISONERS DURING 2004-05

**Table 16 Adult monthly daily average by prison and sentence status.**

	Darwin Correctional Centre		Alice Springs Correctional Centre		All		Total	
	Sentenced	Unsentenced	Sentenced	Unsentenced	Sentenced	Unsentenced	2004-05	2003-04
July	276	95	315	36	591	132	723	718
August	257	89	329	36	586	125	711	693
September	267	80	338	24	605	104	709	712
October	259	95	332	27	591	121	713	713
November	267	109	345	32	612	141	753	724
December	285	109	354	30	639	139	778	738
January	279	122	342	33	622	156	777	734
February	286	129	344	43	630	172	802	734
March	300	133	345	37	645	170	815	722
April	313	123	345	42	658	165	822	720
May	337	105	340	48	677	153	829	712
June	352	92	323	42	674	134	808	715
<b>Yearly 2004-05</b>	<b>290</b>	<b>107</b>	<b>338</b>	<b>36</b>	<b>627</b>	<b>142</b>	<b>770</b>	
Yearly 2003-04	279	96	310	35	588	131		719

**Note:**

The figures represent the averages rounded to the nearest integer.

Percentages are calculated using the integer values in the table and may be subject to rounding errors.

- There was a 7% increase in the yearly daily average compared to the previous year.

**Table 17 Adult exits by prison, release reason and Indigenous status.**

Release Reason	Alice Springs Correctional Centre		Darwin Correctional Centre		All Prisons		Total	
	Indigenous	Non-Indigenous	Indigenous	Non-Indigenous	Indigenous	Non-Indigenous	2004-05	2003-04
Released on bail	19	5	43	22	62	27	89	111
Released ex court	233	16	275	60	508	76	584	569
Fine paid	3	0	0	0	3	0	3	1
Freedom	483	9	289	47	772	56	828	760
Released to parole	58	7	26	12	84	19	103	104
Supervised bond	122	9	118	25	240	34	274	250
Unsupervised bond	127	6	105	37	232	43	275	269
Released to CWO	0	0	1	0	1	0	1	1
Released to Immigration	0	0	0	144	0	144	144	73
Interstate transfer	2	2	0	3	2	5	7	4
Extradited	0	0	0	7	0	7	7	7
Death	0	0	1	0	1	0	1	1
Other	2	0	3	0	5	0	5	2
<b>Total 2004-05</b>	<b>1049</b>	<b>54</b>	<b>861</b>	<b>357</b>	<b>1910</b>	<b>411</b>	<b>2321</b>	
Total 2003-04	981	70	824	277	1805	347		2152
<b>Prison Total 2004-05</b>	<b>1103</b>		<b>1218</b>		<b>2321</b>			
Prison Total 2003-04	1051		1101		2152			

**Other** – Includes special licence and temporary absence from the prison at the time of reporting (e.g. medical transfer).

- There was a 97% increase in prisoners released to immigration compared to 2003-04.

**Table 18 Distinct adults received by prison, age, sex and Indigenous status.**

Age Group	Sex	Alice Springs Correctional Centre		Darwin Correctional Centre		Total	
		Indigenous	Non-Indigenous	Indigenous	Non-Indigenous	2004-05	2003-04
Under 16 years	All	0	0	0	0	0	0
	Male	0	0	0	0	0	0
16 to 17 years	All	1	0	0	1	2	1
	Male	1	0	0	1	2	1
18 to 19 years	All	46	1	54	25	126	96
	Male	41	1	50	24	116	93
20 to 24 years	All	172	10	170	68	420	352
	Male	162	9	160	67	398	335
25 to 29 years	All	164	8	144	62	378	341
	Male	155	8	139	59	361	321
30 to 34 years	All	150	5	153	51	359	347
	Male	144	5	143	49	341	328
35 to 39 years	All	129	4	108	39	280	255
	Male	122	3	101	37	263	241
40 to 44 years	All	72	5	75	37	189	159
	Male	70	4	68	36	178	147
45 to 49 years	All	43	4	34	21	102	71
	Male	41	2	31	19	93	69
50 to 59 years	All	21	5	11	17	54	60
	Male	21	5	11	16	53	54
60 years and older	All	1	0	2	5	8	8
	Male	1	0	2	5	8	8
<b>Total 2004-05</b>	<b>All</b>	<b>799</b>	<b>42</b>	<b>751</b>	<b>326</b>	<b>1918</b>	
	<b>Male</b>	<b>758</b>	<b>37</b>	<b>705</b>	<b>313</b>	<b>1813</b>	
	<b>Female</b>	<b>41</b>	<b>5</b>	<b>46</b>	<b>13</b>	<b>105</b>	
Total 2003-04	All	675	67	702	246		1690
	Male	657	56	657	227		1597
	Female	18	11	45	19		93

**Note:** The age group and correctional institution is for the first reception for a distinct person.

**Table 19 Distinct adults received by institution, place of origin, and Indigenous status.**

Place of Origin	Alice Springs Correctional Centre		Darwin Correctional Centre		Total	
	Indigenous	Non-Indigenous	Indigenous	Non-Indigenous	2004-05	2003-04
<b>Australia</b>						
Alice Springs Urban	282	4	12	1	<b>299</b>	225
Alice Springs Rural	117	0	4	0	<b>121</b>	115
Darwin Urban	11	1	263	34	<b>309</b>	250
Darwin Rural	0	0	9	0	<b>9</b>	13
Groote Eylandt	0	0	40	1	<b>41</b>	52
Hermannsburg	32	0	2	0	<b>34</b>	38
Jabiru	1	0	30	1	<b>32</b>	37
Katherine Urban	5	0	100	4	<b>109</b>	90
Katherine Rural	5	0	101	0	<b>106</b>	99
Nhulunbuy	0	0	30	3	<b>33</b>	34
Papunya	77	0	4	0	<b>81</b>	67
Tennant Creek	128	2	13	2	<b>145</b>	120
Tiwi Islands	0	0	12	0	<b>12</b>	6
Wadeye	0	0	34	0	<b>34</b>	31
Yuendumu	66	0	12	0	<b>78</b>	84
Interstate	59	23	61	90	<b>233</b>	269
Unknown	15	2	24	15	<b>56</b>	39
<b>Total</b>	<b>798</b>	<b>32</b>	<b>751</b>	<b>151</b>	<b>1732</b>	<b>1569</b>
<b>Overseas</b>						
Indonesia	0	0	0	103	<b>103</b>	25
New Zealand	0	1	0	10	<b>11</b>	13
United Kingdom	0	2	0	9	<b>11</b>	24
Other	1	7	0	53	<b>61</b>	59
<b>Total</b>	<b>1</b>	<b>10</b>	<b>0</b>	<b>175</b>	<b>186</b>	<b>121</b>
<b>Total 2004-05</b>	<b>799</b>	<b>42</b>	<b>751</b>	<b>326</b>	<b>1918</b>	
<b>Total 2003-04</b>	<b>675</b>	<b>67</b>	<b>702</b>	<b>246</b>		<b>1690</b>

**Place of origin** – Self reported location of origin, as recorded in IJIS.

**Note:** The correctional institution is for the first reception for a distinct person.

- 10% of distinct prisoners received into an adult correctional centre during the year originated overseas, with Indonesia (103) being most often reported as the place of origin.

**Table 20 Adult sentenced episode commencements by aggregate sentence, offence and Indigenous status.**

Most Serious Offence	Aggregate Sentence Length										Total					
	Months				Years				Days		2004-05		2003-04			
	0-1	1-3	3-6	6-12	1-2	2-5	5-10	> 10	Life	Mean	Median	Total	%	Total	%	
Murder																
All	0	0	0	0	0	0	0	0	4				<b>4</b>	<b>0%</b>	1	0%
Indigenous	0	0	0	0	0	0	0	0	1				<b>1</b>	<b>0%</b>	0	0%
Assault																
All	54	148	174	119	65	33	2	0	0	237	140	<b>595</b>	<b>37%</b>	497	36%	
Indigenous	51	145	168	112	62	31	2	0	0	236	135	<b>571</b>	<b>40%</b>	469	38%	
Sex assault/offences																
All	2	3	4	4	2	15	8	3	1	1280	859	<b>42</b>	<b>3%</b>	32	2%	
Indigenous	1	1	1	0	0	13	4	3	1	1645	941	<b>24</b>	<b>2%</b>	21	2%	
Other against the person																
All	1	2	3	3	7	13	6	1	0	1199	840	<b>36</b>	<b>2%</b>	31	2%	
Indigenous	1	2	3	3	5	8	4	1	0	1191	726	<b>27</b>	<b>2%</b>	27	2%	
Robbery																
All	0	0	0	0	3	9	1	0	0	1221	1093	<b>13</b>	<b>1%</b>	12	1%	
Indigenous	0	0	0	0	2	3	0	0	0	940	1001	<b>5</b>	<b>0%</b>	4	0%	
Property combined																
All	42	47	49	38	21	20	5	0	0	308	139	<b>222</b>	<b>14%</b>	201	14%	
Indigenous	40	41	43	29	18	12	3	0	0	263	120	<b>186</b>	<b>13%</b>	164	13%	
Fraud & misappropriation																
All	3	0	1	2	0	0	1	0	0	491	120	<b>7</b>	<b>0%</b>	11	1%	
Indigenous	1	0	0	1	0	0	0	0	0	140	140	<b>2</b>	<b>0%</b>	2	0%	
Driving combined																
All	95	156	127	59	8	0	0	0	0	109	90	<b>445</b>	<b>28%</b>	409	29%	
Indigenous	93	152	121	56	8	0	0	0	0	108	90	<b>430</b>	<b>30%</b>	386	32%	
Drugs																
All	1	3	7	3	7	6	1	0	0	510	408	<b>28</b>	<b>2%</b>	36	3%	
Indigenous	1	1	2	0	1	1	0	0	0	340	156	<b>6</b>	<b>0%</b>	13	1%	
People smuggling																
All	0	0	0	0	0	0	1	0	0	2669	2669	<b>1</b>	<b>0%</b>	0	0%	
Indigenous	0	0	0	0	0	0	0	0	0			<b>0</b>	<b>0%</b>	0	0%	
Other†																
All	93	55	25	18	16	7	1	0	0	153	57	<b>215</b>	<b>13%</b>	167	12%	
Indigenous	79	45	17	14	12	5	1	0	0	146	41	<b>173</b>	<b>12%</b>	134	11%	
<b>Total 2004-05</b>																
All	<b>291</b>	<b>414</b>	<b>390</b>	<b>246</b>	<b>129</b>	<b>103</b>	<b>26</b>	<b>4</b>	<b>5</b>	<b>264</b>	<b>120</b>	<b>1608</b>	<b>100%</b>			
Indigenous	<b>267</b>	<b>387</b>	<b>355</b>	<b>215</b>	<b>108</b>	<b>73</b>	<b>14</b>	<b>4</b>	<b>2</b>	<b>234</b>	<b>118</b>	<b>1425</b>	<b>100%</b>			
Total 2003-04																
All	243	345	329	214	152	89	18	6	1					1397	100%	
Indigenous	217	312	305	190	115	62	13	6	0					1220	100%	

**Aggregate sentence** – Is determined as the period between the most recent aggregate sentence date (as at 1 July 2005) and the date of reception for the episode.

**Most serious offence** – As recorded in IJIS.

**Months, Years** – The range “X–Y” indicates that the aggregate sentence is greater than the lower bound (X) and up to and including the upper bound (Y).

**Life** – Includes Administrator's Pleasure and indefinite sentence.

**Days (Mean, Median)** – Does not include indeterminate sentences (Life, Administrator's Pleasure and indefinite sentence).

**Other against the person** – Includes manslaughter.

**Other** – Includes prison episodes whose duration largely results from breaches of parole.

**Note:** Includes all episodes, which commenced as sentenced or changed to a sentenced status during 2004-05.

**Table 21 Adult sentenced episodes held by aggregate sentence, offence and Indigenous status.**

Most Serious Offence	Aggregate Sentence Length											Total					
	Months				Years				Days			2004-05		2003-04			
	0-1	1-3	3-6	6-12	1-2	2-5	5-10	> 10	Life	Mean	Median	Total	%	Total	%		
Murder																	
All	0	0	0	0	0	0	0	0	38					38	2%	34	2%
Indigenous	0	0	0	0	0	0	0	0	16					16	1%	15	1%
Assault																	
All	54	164	198	151	113	78	8	3	0	340	181	769	35%	697	35%		
Indigenous	51	161	190	142	107	75	8	3	0	342	180	737	39%	656	39%		
Sex assault/offences																	
All	2	3	4	4	7	33	35	16	1	2112	1826	105	5%	85	4%		
Indigenous	1	1	1	0	4	25	24	14	1	2391	2158	71	4%	61	4%		
Other against the person																	
All	1	2	3	4	10	22	28	7	0	1945	1815	77	4%	74	4%		
Indigenous	1	2	3	4	7	16	22	7	0	2013	1822	62	3%	63	4%		
Robbery																	
All	0	0	0	0	5	16	7	1	0	1716	1460	29	1%	34	2%		
Indigenous	0	0	0	0	3	4	2	0	0	1405	1093	9	0%	13	1%		
Property combined																	
All	43	53	56	55	46	46	10	1	0	439	187	310	14%	287	14%		
Indigenous	41	44	49	45	37	28	7	0	0	371	182	251	13%	224	13%		
Fraud & misappropriation																	
All	3	0	1	2	2	3	1	1	0	1041	454	13	1%	18	1%		
Indigenous	1	0	0	1	0	0	0	0	0	140	140	2	0%	2	0%		
Driving combined																	
All	97	182	159	75	15	0	0	0	0	120	91	528	24%	497	25%		
Indigenous	95	175	153	72	14	0	0	0	0	120	91	509	27%	472	28%		
Drugs																	
All	1	3	8	5	12	9	5	4	3	1204	670	50	2%	60	3%		
Indigenous	1	1	3	1	2	2	0	0	0	407	273	10	1%	14	1%		
People smuggling																	
All	0	0	0	0	0	0	3	0	0	2555	2547	3	0%	8	0%		
Indigenous	0	0	0	0	0	0	0	0	0			0	0%	0	0%		
Other																	
All	96	60	34	30	29	14	3	0	1	210	72	267	12%	216	11%		
Indigenous	80	49	25	26	23	11	3	0	1	211	66	218	12%	175	10%		
<b>Total 2004-05</b>																	
All	297	467	463	326	239	221	100	33	43	472	162	2189	100%				
Indigenous	271	433	424	291	197	161	66	24	18	408	148	1885	100%				
Total 2003-04																	
All	251	375	404	328	271	209	98	35	39	510	182			2010	100%		
Indigenous	225	335	372	296	222	139	66	23	17	430	181			1695	100%		

**Aggregate sentence** – Is determined as the period between the most recent aggregate sentence date (as at 1 July 2005) and the date of reception for the episode.

**Most serious offence** – As recorded in IJIS.

**Months, Years** – The range “X–Y” indicates that the aggregate sentence is greater than the lower bound (X) and up to and including the upper bound (Y).

**Life** – Includes Administrator's Pleasure and indefinite sentence.

**Days (Mean, Median)** – Does not include indeterminate sentences (Life, Administrator's Pleasure and indefinite sentence).

**Other against the person** – Includes manslaughter.

**Other** – Includes prison episodes whose duration largely results from breaches of parole.

## JUVENILE DETAINEES DURING 2004-05

**Table 22 Juvenile monthly daily average by sentence status.**

	Sentenced		Unsentenced		Total	
	2004-05	2003-04	2004-05	2003-04	2004-05	2003-04
July	4	14	6	8	9	22
August	5	12	8	10	13	22
September	7	12	9	11	16	24
October	8	9	7	8	15	17
November	5	6	7	9	13	15
December	13	6	14	9	26	15
January	16	6	10	8	26	14
February	12	5	10	7	22	11
March	8	6	13	8	21	14
April	6	6	13	7	19	13
May	9	3	9	9	18	13
June	6	3	10	9	16	12
<b>Yearly 2004-05</b>	<b>8</b>	<b>7</b>	<b>10</b>	<b>9</b>	<b>18</b>	<b>16</b>

**Note:**

The figures represent the averages rounded to the nearest integer.

Percentages are calculated using the integer values in the table and may be subject to rounding errors.

- There was a 14% increase in the yearly daily average for sentenced detainees and an 11% increase in the yearly daily average for unsentenced detainees.

**Table 23 Juvenile exits by institution, release reason and Indigenous status.**

Release Reason	Alice Springs Juvenile Holding		Don Dale Detention Centre		Wilderness Camp		All		Total	
	Indigenous	Non-Indigenous	Indigenous	Non-Indigenous	Indigenous	Non-Indigenous	Indigenous	Non-Indigenous	2004-05	2003-04
Released on bail	2	1	11	0	0	0	13	1	14	12
Released ex court	52	4	79	11	0	0	131	15	146	121
Extradited	0	0	0	0	0	0	0	0	0	8
Fine paid	0	0	0	0	0	0	0	0	0	1
Freedom	2	0	23	3	0	0	25	3	28	28
Supervised bond	0	0	6	1	0	0	6	1	7	11
Unsupervised bond	0	0	0	0	0	0	0	0	0	2
Released to CWO	0	0	0	0	0	0	0	0	0	0
Released to Immigration	0	0	0	0	0	0	0	0	0	4
Death	0	0	0	0	0	0	0	0	0	0
Other	0	0	0	1	0	0	0	1	1	3
<b>Total 2004-05</b>	<b>56</b>	<b>5</b>	<b>119</b>	<b>16</b>	<b>0</b>	<b>0</b>	<b>175</b>	<b>21</b>	<b>196</b>	
Total 2003-04	46	2	107	33	1	1	154	36		190
<b>Centre Total 2004-05</b>	<b>61</b>		<b>135</b>		<b>0</b>		<b>196</b>			
Centre Total 2003-04	48		140		2		190			

**Table 24 Juvenile orders and distinct episode commencements by Indigenous status and sex.**

Order Type	Indigenous		Non-Indigenous		Total	
	Male	Female	Male	Female	2004-05	2003-04
Sentenced/Detention	42	0	5	0	47	30
Fine Default	1	0	0	0	1	1
Remand	156	5	17	0	178	156
Immigration	0	0	0	0	0	13
<b>Total 2004-05</b>	<b>199</b>	<b>5</b>	<b>22</b>	<b>0</b>	<b>226</b>	
Total 2003-04	161	4	35	0		200
<b>Distinct episodes 2004-05</b>	<b>182</b>	<b>5</b>	<b>21</b>	<b>0</b>	<b>208</b>	
Distinct episodes 2003-04	147	4	32	0		183

**Remand** – Includes holding orders.

**Note:** It is common for more than one type of order to commence during an episode; consequently, the total number of order type commencements may exceed the number of distinct episodes.

- During 2004-05, 79% of the orders were for remand.
- During 2004-05, 88% of the distinct episodes commenced were for Indigenous male juveniles.

**Table 25 Distinct juveniles received by last known address, age and Indigenous status.**

Last Known Address	Indigenous Status	Age Group (Years)					Total	
		10-12	13-14	15-16	17	18+	2004-05	2003-04
Alice Springs Urban	All	1	11	10	4	0	26	21
	Indigenous	1	10	10	2	0	23	20
Alice Springs Rural	All	0	2	6	1	0	9	10
	Indigenous	0	2	6	1	0	9	10
Darwin Urban	All	2	4	14	6	1	27	27
	Indigenous	2	3	10	5	1	21	19
Darwin Rural	All	0	0	0	0	0	0	1
	Indigenous	0	0	0	0	0	0	1
Groote Eylandt	All	0	0	1	1	0	2	3
	Indigenous	0	0	1	1	0	2	3
Jabiru	All	0	1	4	3	0	8	7
	Indigenous	0	1	4	3	0	8	7
Katherine Urban	All	0	1	3	5	0	9	11
	Indigenous	0	1	3	5	0	9	9
Katherine Rural	All	0	0	4	1	0	5	2
	Indigenous	0	0	4	1	0	5	2
Nhulunbuy	All	0	0	1	2	0	3	1
	Indigenous	0	0	1	1	0	2	1
Tennant Creek	All	0	7	10	3	0	20	11
	Indigenous	0	7	10	3	0	20	10
Tiwi Islands	All	0	0	0	0	0	0	1
	Indigenous	0	0	0	0	0	0	1
Wadeye	All	0	1	4	1	0	6	16
	Indigenous	0	1	4	1	0	6	16
Other	All	1	0	0	2	0	3	3
	Indigenous	1	0	0	0	0	1	2
Foreign	All	0	0	0	0	0	0	12
	Indonesia	0	0	0	0	0	0	12
<b>Total 2004-05</b>	<b>All</b>	<b>4</b>	<b>27</b>	<b>57</b>	<b>29</b>	<b>1</b>	<b>118</b>	
	<b>Indigenous</b>	<b>4</b>	<b>25</b>	<b>53</b>	<b>23</b>	<b>1</b>	<b>106</b>	
	<b>% Indigenous</b>	<b>100%</b>	<b>93%</b>	<b>93%</b>	<b>79%</b>	<b>100%</b>	<b>90%</b>	
Total 2003-04	All	3	27	49	45	2		126
	Indigenous	3	23	39	35	1		101
	% Indigenous	100%	85%	80%	78%	50%		80%

**Last known address** – As recorded in IJIS and aggregated into reporting districts.

**Age** – In years at first reception.



**Table 26 Juvenile episode commencements by offence.**

Most Serious Offence	Age Group (Years)				Total	
	10-14	15-16	17	18	2004-05	2003-04
Against the person						
Homicide	0	0	0	0	0	3
Assault	6	33	17	0	56	39
Sexual assault	1	3	5	0	9	3
Total	7	36	22	0	65	45
Robbery	0	1	1	0	2	6
Property offences						
Break and enter	24	41	13	0	78	76
Fraud	0	2	0	0	2	0
Stealing	4	7	5	1	17	9
Unlawful use of motor vehicle	3	14	2	1	20	11
Property damage	0	2	2	0	4	6
Property other	0	0	0	0	0	1
Total	31	66	22	2	121	103
Against good order						
Justice offences	1	3	3	0	7	5
Good order	0	0	0	0	0	3
Total	1	3	3	0	7	8
Drug offences	0	1	1	0	2	1
Driving offences						
Drive under the influence of alcohol	0	0	0	0	0	1
Other driving / traffic offences	0	1	2	0	3	2
Total	0	1	2	0	3	3
Other	0	8	0	0	8	17
<b>Total 2004-05</b>	<b>39</b>	<b>116</b>	<b>51</b>	<b>2</b>	<b>208</b>	
Total 2003-04	55	67	59	2		183

**Most serious offence** – As recorded in IJIS.

**Age** – In years at reception.

**Note:**

The 18 year olds may be adults who are initially misclassified as juveniles.

Remand and holding episodes are included in the table.

A juvenile may commence several short remand or holding episodes for the same offences without being convicted.

## COMMUNITY CORRECTIONS CASELOAD AS AT 30 JUNE 2005

Table 27 Community Corrections adult program caseload by office, Indigenous status and program.

Office		Program								Total	
		Pre Parole	Pre Probation	Life Sentenced Prisoners	Parole	Probation	Home Detention	Community Work Order	Other	2005	2004
Alice Springs	All	109	35	12	38	188	3	70	6	<b>461</b>	440
	Indigenous	89	32	4	31	148	1	58	5	<b>368</b>	353
Casuarina	All	96	28	14	52	221	32	52	23	<b>518</b>	421
	Indigenous	52	18	2	10	103	7	25	10	<b>227</b>	184
Groote Eylandt	All	17	9	0	6	41	11	12	9	<b>105</b>	97
	Indigenous	17	9	0	6	39	11	11	8	<b>101</b>	97
Jabiru	All	7	6	2	3	19	0	5	1	<b>43</b>	47
	Indigenous	7	6	2	3	18	0	5	1	<b>42</b>	46
Katherine	All	27	14	4	10	98	5	52	9	<b>219</b>	236
	Indigenous	26	14	4	10	86	4	47	6	<b>197</b>	211
Nhulunbuy	All	2	1	0	2	30	0	10	0	<b>45</b>	44
	Indigenous	2	1	0	2	26	0	10	0	<b>41</b>	40
Palmerston	All	9	9	2	14	52	0	12	2	<b>100</b>	118
	Indigenous	4	7	0	5	20	0	4	1	<b>41</b>	49
Tennant Creek	All	14	12	0	6	50	0	27	3	<b>112</b>	90
	Indigenous	14	12	0	5	43	0	22	3	<b>99</b>	82
Tiwi Islands	All	2	5	2	2	33	2	8	0	<b>54</b>	42
	Indigenous	2	5	2	1	32	2	8	0	<b>52</b>	42
Wadeye	All	8	9	0	7	15	2	11	1	<b>53</b>	50
	Indigenous	8	9	0	7	15	2	11	1	<b>53</b>	50
<b>Total 30 June 2005</b>	<b>All</b>	<b>291</b>	<b>128</b>	<b>36</b>	<b>140</b>	<b>747</b>	<b>55</b>	<b>259</b>	<b>54</b>	<b>1710</b>	
	<b>Indigenous</b>	<b>221</b>	<b>113</b>	<b>14</b>	<b>80</b>	<b>530</b>	<b>27</b>	<b>201</b>	<b>35</b>	<b>1221</b>	
Total 30 June 2004	All	291	91	36	156	610	53	292	56		1585
	Indigenous	231	69	14	91	447	18	248	36		1154

**Other** – Programs include pre-sentencing reports, home detention assessments and bail assessments.

**Note:**

Adult status is based on age at commencement of program.

Programs in breach with expected end-dates greater than three years prior to 30 June 2005 are not included.

These figures do not represent distinct clients, as a client may have more than one program active simultaneously.

**Table 28 Community Corrections juvenile program caseload by office, Indigenous status and program.**

Office		Program						Total	
		Pre Probation	Probation	Pre Parole	Periodic Detention	Community Work Order	Other	2005	2004
Alice Springs	All	0	51	1	0	23	2	77	83
	Indigenous	0	47	1	0	19	2	69	73
Casuarina	All	3	36	1	0	25	4	69	69
	Indigenous	3	21	1	0	20	4	49	48
Groote Eylandt	All	0	6	0	0	1	1	8	10
	Indigenous	0	6	0	0	1	1	8	10
Jabiru	All	0	10	0	0	4	2	16	12
	Indigenous	0	10	0	0	4	2	16	12
Katherine	All	0	23	0	0	9	6	38	36
	Indigenous	0	22	0	0	9	5	36	33
Nhulunbuy	All	1	6	0	0	1	1	9	5
	Indigenous	1	4	0	0	1	0	6	3
Palmerston	All	0	18	0	0	3	1	22	15
	Indigenous	0	9	0	0	2	1	12	6
Tennant Creek	All	0	25	0	0	11	0	36	36
	Indigenous	0	24	0	0	10	0	34	36
Tiwi Islands	All	0	2	0	0	1	0	3	2
	Indigenous	0	2	0	0	1	0	3	2
Wadeye	All	0	15	0	0	16	1	32	26
	Indigenous	0	15	0	0	16	1	32	26
<b>Total 30 June 2005</b>	<b>All</b>	<b>4</b>	<b>192</b>	<b>2</b>	<b>0</b>	<b>94</b>	<b>18</b>	<b>310</b>	
	<b>Indigenous</b>	<b>4</b>	<b>160</b>	<b>2</b>	<b>0</b>	<b>83</b>	<b>16</b>	<b>265</b>	
<b>Total 30 June 2004</b>	<b>All</b>	<b>3</b>	<b>169</b>	<b>3</b>	<b>0</b>	<b>106</b>	<b>13</b>		<b>294</b>
	<b>Indigenous</b>	<b>3</b>	<b>137</b>	<b>3</b>	<b>0</b>	<b>94</b>	<b>12</b>		<b>249</b>

**Other** – Programs include pre-sentencing reports, home detention assessments and bail assessments.

**Note:**

Adult status was based on age at commencement of program.

Programs in breach with expected end-dates greater than three years prior to 30 June 2005 are not included.

These figures do not represent distinct clients, as a client may have more than one program active simultaneously.

## COMMUNITY CORRECTIONS TURNOVER DURING 2004-05

**Table 29 Conditional liberty program completions.**

Program	Completions				Success Rate	
	Successful	Unsuccessful	Other	Total	2004-05	2003-04
Community work orders						
Adult	272	105	3	380	72%	70%
Juvenile	108	20	0	128	84%	83%
Home detention	95	8	0	103	92%	87%
Parole	71	40	4	115	64%	61%
Probation						
Adult	269	159	13	441	63%	64%
Juvenile	97	30	1	128	76%	66%
<b>Total 2004-05</b>	<b>912</b>	<b>362</b>	<b>21</b>	<b>1295</b>	<b>72%</b>	
Total 2003-04	736	324	33	1093		69%

**Other** – Includes interstate transfers, time in custody and deaths.

**Success rate** – Is expressed as a proportion of successful and unsuccessful completions only.

**Table 30 Conditional liberty program commencements by Indigenous status and sex.**

Order	Indigenous		Non-Indigenous		Unknown		Total	
	Female	Male	Female	Male	Female	Male	2004-05	2003-04
Community work order								
Adult	34	267	13	56	0	0	370	352
Juvenile	6	88	1	21	0	0	116	122
Home detention order	4	58	9	38	0	0	109	111
Parole	0	78	3	23	0	0	104	121
Probation								
Adult	40	402	20	96	0	0	558	478
Juvenile	6	127	1	23	0	0	157	133
<b>Total 2004-05</b>	<b>90</b>	<b>1020</b>	<b>47</b>	<b>257</b>	<b>0</b>	<b>0</b>	<b>1414</b>	
Total 2003-04	100	947	33	237	0	0		1317

**Table 31 Conditional liberty distinct persons commencing by Indigenous status and sex.**

	Indigenous		Non-Indigenous		Unknown		All		Total	
	Female	Male	Female	Male	Female	Male	Female	Male	2004-05	2003-04
Distinct adults	68	600	40	176	0	0	108	776	884	865
Distinct juveniles	11	144	2	33	0	0	13	177	190	194
<b>Distinct persons 2004-05</b>	<b>79</b>	<b>740</b>	<b>42</b>	<b>209</b>	<b>0</b>	<b>0</b>	<b>121</b>	<b>949</b>	<b>1070</b>	
Distinct persons 2003-04	89	739	30	198	0	0	119	937		1056

**Note:** The sum of distinct adults and juveniles may differ to the total distinct persons, as a person could appear as both an adult and juvenile in the same year.

**Table 32 Conditional liberty order commencements by office, program and age status.**

Office	Program						Total	
	Home Detention	Probation		Parole	Community Work Order		2004-05	2003-04
	Adult	Adult	Juvenile	Adult	Adult	Juvenile		
Alice Springs	16	163	40	35	78	26	358	369
Casuarina	53	111	25	25	66	19	299	289
Groote Eylandt	12	39	5	5	32	5	98	96
Jabiru	0	14	8	1	3	4	30	32
Katherine	21	74	19	15	48	7	184	194
Nhulunbuy	0	22	5	0	28	2	57	61
Palmerston	0	41	19	8	35	14	117	66
Tennant Creek	0	49	25	5	36	26	141	125
Tiwi Islands	3	29	2	2	21	1	58	34
Wadeye	4	16	9	8	23	12	72	51
<b>Total 2004-05</b>	<b>109</b>	<b>558</b>	<b>157</b>	<b>104</b>	<b>370</b>	<b>116</b>	<b>1414</b>	
Total 2003-04	111	478	133	121	352	122		1317

- Palmerston recorded a 77% increase in the total number of conditional liberty order commencements.
- Katherine has continued to record a decrease in commencements.

**Table 33 Community work order commencements by offence and age.**

Most Serious Offence	Age Group (Years)										Total	
	Juvenile					Adult					2004-05	2003-04
	10-12	13-14	15-16	17	18-19	20-24	25-29	30-34	35-39	40+		
Against the person												
Manslaughter	0	0	0	0	0	0	0	0	0	0	0	0
Other against the person	0	0	0	0	1	1	1	0	0	0	3	4
Assault	0	1	5	4	12	15	9	4	6	3	59	46
Sex assault/offences	0	0	0	0	0	0	0	0	0	0	0	2
Robbery	0	0	0	0	1	0	0	0	0	0	1	1
Property offences												
Break and enter	0	4	24	6	16	20	8	4	1	0	83	93
Unlawful use motor vehicle	0	0	12	2	7	11	3	3	0	1	39	28
Stealing/receiving/other theft	0	4	15	4	8	11	6	5	1	3	57	71
Fraud and misappropriation	0	0	0	0	0	2	0	0	0	1	3	3
Damage property	0	2	6	4	11	16	11	6	5	2	63	68
Drug offences	0	0	0	1	1	5	3	2	1	2	15	17
Driving offences												
Driving under the influence	0	0	0	1	1	10	5	8	4	3	32	31
Drive disqualified/other driving	0	0	1	1	3	7	3	5	2	3	25	26
Justice procedures/other offences	0	1	13	5	9	20	19	22	5	12	106	84
<b>Total 2004-05</b>	<b>0</b>	<b>12</b>	<b>76</b>	<b>28</b>	<b>70</b>	<b>118</b>	<b>68</b>	<b>59</b>	<b>25</b>	<b>30</b>	<b>486</b>	
Total 2003-04	9	36	46	31	69	111	53	50	34	35		474

**Most serious offence** – As recorded in IJIS.

**Justice procedures/other offences** – May include breaches, firearms offences, good order offences, etc.

**Table 34 Home detention order commencements by offence and age.**

Most Serious Offence	Age Group (Years)						Total	
	18-19	20-24	25-29	30-34	35-39	40+	2004-05	2003-04
	Against the person							
Manslaughter	0	0	0	0	0	0	0	0
Other against the person	1	1	0	1	0	0	3	2
Assault	2	1	2	3	1	2	11	9
Sexual assault/offence	0	0	0	0	0	0	0	0
Robbery	0	0	0	0	0	0	0	1
Property offences								
Break and enter	1	4	3	2	1	0	11	13
Unlawful use motor vehicle	0	2	0	0	0	0	2	4
Stealing/receiving/other theft	0	2	2	2	0	1	7	7
Fraud and misappropriation	1	2	2	0	1	5	11	5
Damage property	1	2	2	1	0	0	6	4
Drug offences	0	1	0	0	1	0	2	3
Driving offences								
Driving under the influence	0	3	3	3	3	6	18	29
Drive disqualified/other driving	1	7	4	9	2	9	32	30
Justice procedures/other offences	0	1	2	2	0	1	6	4
<b>Total 2004-05</b>	<b>7</b>	<b>26</b>	<b>20</b>	<b>23</b>	<b>9</b>	<b>24</b>	<b>109</b>	
Total 2003-04	11	27	16	19	12	26		111

**Most serious offence** – As recorded in IJIS.

**Justice procedures/other offences** – May include breaches, firearms offences, good order offences, etc.

**Table 35 Releases to parole by offence and age.**

Most Serious Offence	Age Group (Years)						Total	
	18-19	20-24	25-29	30-34	35-39	40+	2004-05	2003-04
Against the person								
Murder	0	0	0	1	0	1	2	0
Manslaughter	0	0	0	0	0	0	0	3
Other against the person	1	1	0	1	1	0	4	7
Assault	1	5	6	14	7	4	37	36
Sexual assault/offence	0	2	2	1	0	1	6	7
Robbery	0	1	0	1	2	0	4	7
Property offences								
Break and enter	0	6	1	1	1	0	9	15
Unlawful use motor vehicle	0	0	2	1	1	1	5	2
Stealing/receiving/other theft	0	1	1	0	0	0	2	1
Fraud and misappropriation	0	0	0	1	0	2	3	0
Damage property	0	0	0	2	0	1	3	4
Drug offences	0	1	0	1	4	2	8	4
Driving offences								
Driving under the influence	0	0	1	2	0	0	3	7
Drive disqualified/other driving	0	1	2	0	0	1	4	7
Justice procedures/other offences	0	5	0	4	1	4	14	21
<b>Total 2004-05</b>	<b>2</b>	<b>23</b>	<b>15</b>	<b>30</b>	<b>17</b>	<b>17</b>	<b>104</b>	
Total 2003-04	1	19	25	36	25	15		121

**Most serious offence** – As recorded in IJIS.

**Justice procedures/other offences** – May include breaches, firearms offences, good order offences, etc.

**Table 36 Probation order commencements by offence and age.**

Most Serious Offence	Age Group (Years)										Total		
	Juvenile				Adult						2004-05	2003-04	
	10-12	13-14	15-16	17	18-19	20-24	25-29	30-34	35-39	40+			
Against the person													
Manslaughter	0	0	0	0	0	0	0	0	0	0	0	0	0
Other against the person	0	0	0	2	2	2	3	3	0	3	15	15	14
Assault	0	2	14	5	22	54	41	44	31	26	239	239	202
Sexual assault/offence	0	0	0	0	1	3	1	0	1	6	12	12	11
Robbery	0	0	1	1	1	2	1	0	0	0	6	6	4
Property offences													
Break and enter	2	18	30	12	23	22	10	3	2	2	124	124	89
Unlawful use motor vehicle	0	3	12	3	4	5	1	0	0	0	28	28	34
Stealing/receiving/other theft	2	3	9	7	7	8	6	2	2	2	48	48	44
Fraud and misappropriation	0	0	1	0	1	1	4	0	2	2	11	11	5
Damage property	0	1	9	2	3	8	2	4	2	1	32	32	31
Drug offences	0	0	0	0	2	8	8	7	4	7	36	36	23
Driving offences													
Driving under the influence	0	0	1	0	0	4	5	5	3	7	25	25	28
Drive disqualified/other driving	0	1	1	1	3	15	9	7	18	13	68	68	75
Justice procedures/other offences	0	1	8	5	10	21	10	7	2	7	71	71	51
<b>Total 2004-05</b>	<b>4</b>	<b>29</b>	<b>86</b>	<b>38</b>	<b>79</b>	<b>153</b>	<b>101</b>	<b>82</b>	<b>67</b>	<b>76</b>	<b>715</b>		
Total 2003-04	7	41	54	31	64	105	96	90	60	63			611

**Most serious offence** – As recorded in IJIS.

**Justice procedures/other offences** – May include breaches, firearms offences, good order offences, etc.