

Northern Territory Correctional Services and Youth Justice

Annual Statistics

2015 – 2016

Northern Territory Correctional Services and Youth Justice Annual Statistics

2015 - 2016

© Northern Territory of Australia, Department of the Attorney-General and Justice,
2017

All rights reserved.

Whilst all reasonable care has been taken in the preparation of this report, the Northern Territory of Australia, its employees and agents do not warrant or represent that the report is free from errors or omission, or that it is exhaustive. No liability is assumed for any errors or omissions.

Produced by:

Criminal Justice Research and Statistics Unit

Northern Territory Government

GPO Box 1722

DARWIN NT 0801

Telephone: (08) 8935 7446

Website: <https://justice.nt.gov.au/attorney-general-and-justice/statistics-and-strategy>

CONTENTS

Annual Statistics.....	1
Introduction	1
Caseload Overview.....	3
Adult Prisoners.....	4
Population	4
Receptions	4
Imprisonment Rates	4
Sentenced Prisoners.....	5
Offence	5
Last Known Address	5
Indigenous Status	6
Age.....	6
Sex.....	6
Marital Status	7
Youth Detainees.....	8
Population	8
Receptions and Sentence Status	9
Offence	9
Indigenous Status	9
Age.....	9
Sex.....	9
Foreign National Prisoners.....	10
Adult Prisoners.....	11
Youth Detainees.....	11
Community Corrections Programs	12
Program Caseload	12
Commencements	12
Indigenous Status	12
Age.....	12
Sex.....	12
PERFORMANCE	13
SUPPORTING TABLES.....	16
Census of Adult Prisoners as at 30 June 2016	16
Adult Prisoner and Youth Detainee Turnover During 2015-16	21
Adult Prisoners During 2015-16	23
Youth Detainees During 2015-16	34
Community Corrections Caseload as at 30 June 2016	40
Community Corrections Turnover During 2015-16.....	42
APPENDIX 1	44
Offence Classifications.....	44

T A B L E S

Table 1 Summary of adult prisoner numbers in 2015-16 by correctional institution.	4
Table 2 Summary of youth detainee numbers in 2015-16 by detention centre.	8
Table 3 Summary of estimated daily average foreign prisoners and detainees from 1996-97 to 2015-16.	10
Table 4 National Performance Indicators.	14
Table 5 Census of prisoners by correctional institution, sentence status, Indigenous status and gender.	16
Table 6 Census of prisoners by correctional institution and employment status at time of reception.	16
Table 7 Census of prisoners by correctional institution and age.	17
Table 8 Census of prisoners by correctional institution and marital status.	17
Table 9 Census of sentenced prisoners by correctional institution and aggregate sentence.	17
Table 10 Census of prisoners by correctional institution, last known address and Indigenous status.	18
Table 11 Census of prisoners by offence and sentence status.	19
Table 12 Census of prisoners by correctional institution, Indigenous status and type of sentence.	20
Table 13 Adult and youth turnover summary.	21
Table 14 Adult and youth escapes (incidents and persons).	21
Table 15 Adult and youth receptions by sentence status, Indigenous status and sex.	22
Table 16 Adult monthly daily average by correctional institution and sentence status.	23
Table 17 Adult releases by correctional institution, release reason and Indigenous status.	24
Table 18 Distinct adults received by correctional institution, age, sex and Indigenous status.	25
Table 19 Distinct adults received by correctional institution, place of origin and Indigenous status.	26
Table 20 Adult sentenced episode commencements by aggregate sentence, offence and Indigenous status.	27
Table 21 Adult sentenced episodes held by aggregate sentence, offence and Indigenous status.	29
Table 22 Adult sentenced episodes commenced by aggregate sentence, offence and gender.	30
Table 23 Adult and youth sentenced episode commencements by aggregate sentence and offence.	32
Table 24 Youth monthly daily average by sentence status.	34
Table 25 Youth releases by institution, release reason and Indigenous status.	34
Table 26 Youth orders and distinct episode commencements by Indigenous status and sex.	35
Table 27 Distinct youths received by last known address, age and Indigenous status.	36
Table 28 Youth receptions by offence.	38
Table 29 Community Corrections adult caseload by office, Indigenous status and program.	40
Table 30 Community Corrections youth caseload by office, Indigenous status and program.	41
Table 31 Community-based program completions.	42
Table 32 Community-based program commencements by Indigenous status and gender.	42
Table 33 Distinct persons commencing a community-based program by Indigenous status and gender.	43

FIGURES

Figure 1 Northern Territory correctional services distinct client caseload	3
Figure 2 Yearly daily average adult prisoners from 1995-96 to 2015-16.....	4
Figure 3 Estimated adult imprisonment rates by jurisdiction, 2015-16.	5
Figure 4 Estimated adult Indigenous imprisonment rates by jurisdiction, 2015-16.....	6
Figure 5 Estimated adult female imprisonment rates, 2010-11 to 2015-16.....	7
Figure 6 Yearly daily average youth detainees from 1995-96 to 2015-16.....	8
Figure 7 Distribution of selected 'most serious offences' for foreign national prisoners and all adult prisoners ...	11
Figure 8 Community Corrections program caseload (adult and youth)	12
Figure 9 Distribution of aggregate sentence commencements for adults and youths according to selected offences and age group, 2015-16	31
Figure 10 Two year comparison of most serious offences for receptions of youth aged 10 to 14 years	39

ANNUAL STATISTICS

INTRODUCTION

Prior to the August 2016 Northern Territory general election, the Northern Territory Department of Correctional Services (NTDCS) supervised both adults and youth who were subject to imprisonment/detention or community-based orders. Following the election, adult correctional services became a part of the Department of the Attorney-General and Justice, and youth justice services became part of Territory Families.

Persons in custody are located at:

Adults -

- Alice Springs Correctional Centre;
- Darwin Correctional Centre;
- Datjala Work Camp (Nhulunbuy); and
- Barkly Work Camp.

Youths -

- Alice Springs Youth Detention Centre, located within the Alice Springs Correctional Precinct; and
- Don Dale Youth Detention Centre, located 16 km south of Darwin.

The non-custodial orders are administered by officers located in eight offices throughout the Northern Territory (NT):

- Palmerston and Top End Region (Jabiru, Maningrida, Oenpelli, Tiwi Islands);
- Casuarina;
- Alice Springs;
- Katherine;
- Tennant Creek;
- Groote Eylandt (Alyangula);
- Wadeye (Port Keats); and
- Nhulunbuy.

This report presents detailed statistics on adults and youths supervised by NTDCS during 2015-16. Data from 2014-15 are supplied for comparison purposes as well as some long term data to show trends.

Statistics in this report include demographic characteristics of prisoners and community corrections clients, receptions, sentence status, offence types, last known address, caseload, community corrections client turn over, imprisonment rates and sentence durations.

The majority of the data are extracted from the Integrated Offender Management System (IOMS). Some internal data compiled by corrections staff are also used (eg escape information, daily averages).

National rates of imprisonment compiled by the Australian Bureau of Statistics (ABS) are provided for comparison with Northern Territory rates.

Selected characteristics in relation to the NT and other jurisdictions for 2015-16 from the 'Report on Government Services' are presented in this report.

Care should be taken when comparing information from this with other publications (eg ABS publications, Department of Correctional Services Annual Report and Report on Government Services), as different data collection timeframes, data extractions dates, different data sources or different counting methods may have been used.

The tables provided in this publication relating to the census of prisoners held on 30 June 2016 only include prisoners held in Northern Territory correctional centres. It does not include 6 prisoners who were held in Police Prisons on the night of 30 June 2016. These police prisoners are included in the ABS publication "Prisoners in Australia" therefore some differences may occur between figures in this report and figures published by the ABS.

The basis for reporting on offences is the Most Serious Offence (MSO) for the episode as recorded in IOMS. To enable national comparability, reporting on offences is in accordance with the Australian and New Zealand Standard Offence Classification (ANZSOC) divisions and selected subdivisions. Offence table abbreviations and classifications can be found in Appendix 1.

The totals in some tables (eg daily averages) may differ to the sum of the components due to rounding of the values of the components.

This comprehensive set of statistics is primarily used by corrections and youth justice staff for tactical and strategic planning relating to correctional services and youth justice services in the Northern Territory. Researchers and practitioners from other jurisdictions may also find this publication informative.

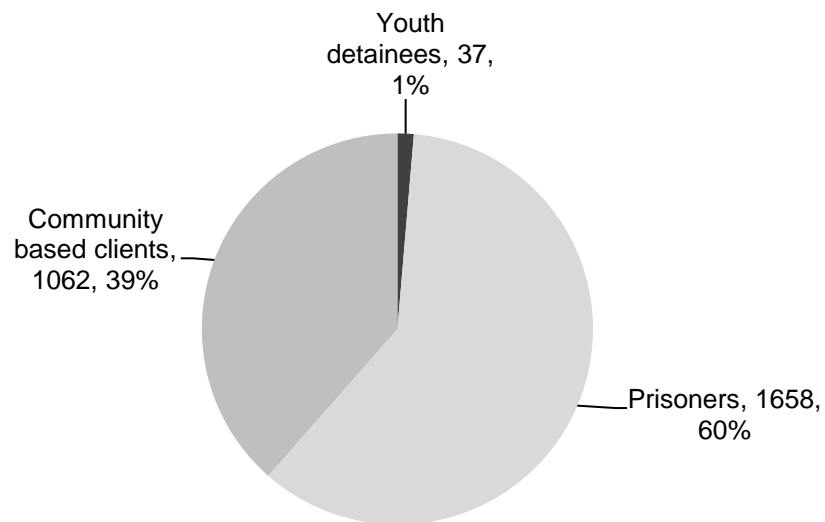
This report was compiled by the Criminal Justice Research and Statistics Unit, Northern Territory Government, and is available via the website:

<https://justice.nt.gov.au/attorney-general-and-justice/statistics-and-strategy/criminal-justice-statistics>

CASELOAD OVERVIEW

On 30 June 2016, the Northern Territory correctional services caseload consisted of 2,757 distinct persons, either undertaking a community based program or in custody in a correctional institution. This is estimated as 1,324 per 100,000¹ persons in the Northern Territory.

Figure 1 Northern Territory correctional services distinct client caseload as at 30 June 2016.



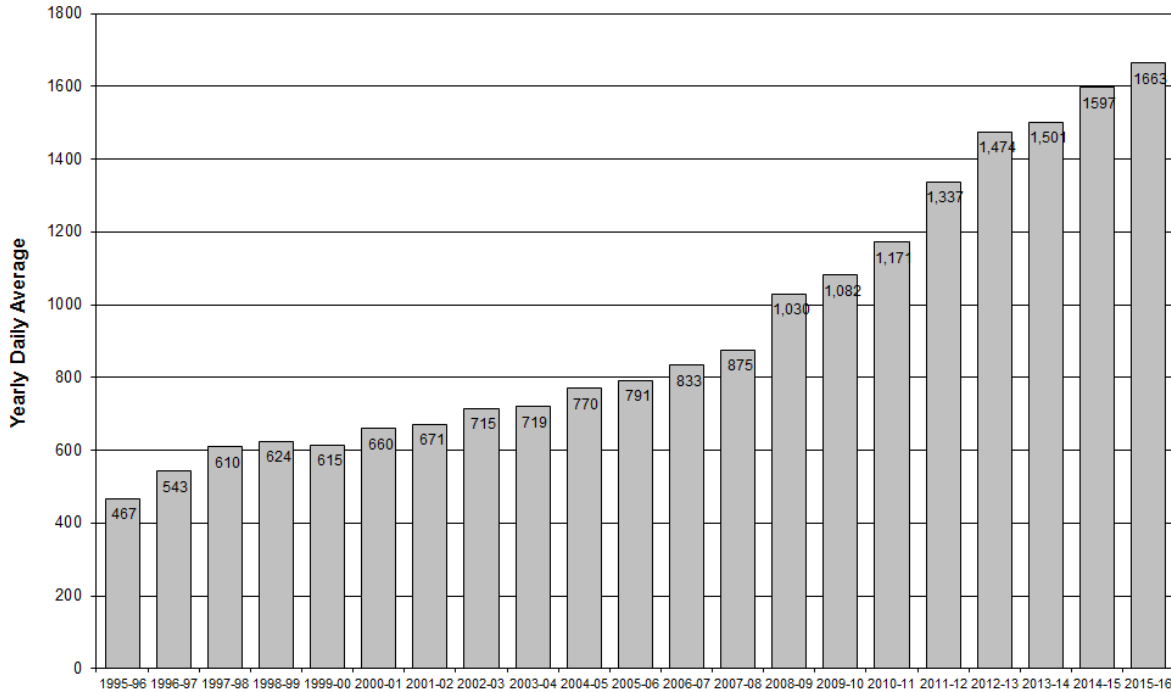
¹ Derived from the Australian Bureau of Statistics publication (3101.0) – Australian Demographic Statistics, June 2016.

ADULT PRISONERS

Population

The daily average number of prisoners held in adult correctional institutions in the Northern Territory in 2015-16 was 1,663 which was 4% higher than the previous year (1,597). The following figure shows the prison population has steadily been increasing over the past 20 years.

Figure 2 Yearly daily average adult prisoners from 1995-96 to 2015-16.



The minimum and maximum number of prisoners that were held in custody in an adult correctional institution in the Northern Territory on any day during 2015-16 was 1,546 and 1,767 respectively. The average occupancy level of the combined correctional institutions was 101% during the year.

Table 1 Summary of adult prisoner numbers in 2015-16 by correctional institution.

Correctional Institution	Minimum	Maximum	Daily Average	Design Capacity	Average Occupancy Level
Alice Springs Correctional Centre	562	661	603	500	121%
Darwin Correctional Centre	863	1034	961	1048	92%
Barkly Work Camp	50	70	60	50	120%
Datjala Work Camp	29	50	39	50	78%
All Centres	1546	1767	1663	1648	101%

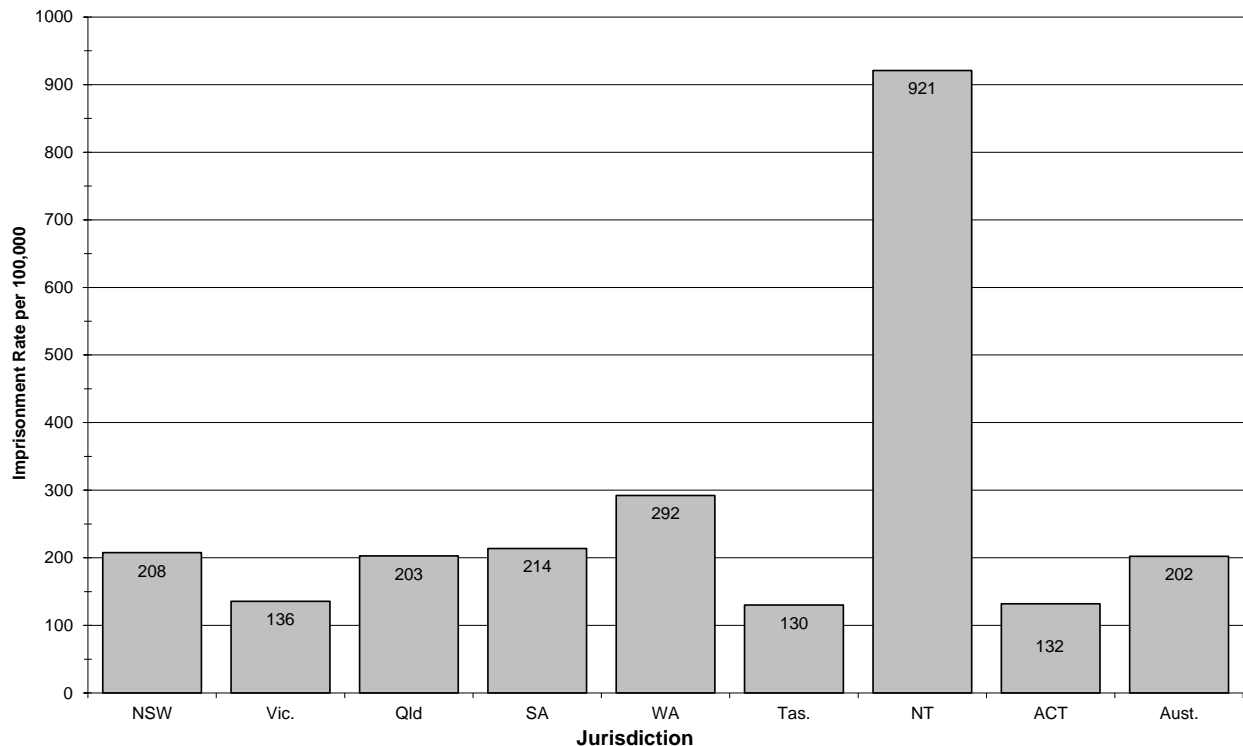
Receptions

There were 4,273 receptions into Northern Territory adult correctional institutions during 2015-16, an increase of 4% from the previous year. These receptions involved 3,327 distinct persons.

Imprisonment Rates

The rate of imprisonment² of adults in the Northern Territory for 2015-16 is estimated to be 921 per 100,000 adults, which continues to be significantly higher than in other jurisdictions (see Figure 3 below). The national rate of imprisonment is estimated as 202 per 100,000 adults.

² Derived from the Australian Bureau of Statistics publication (4512.0) – Corrective Services Australia, June quarter 2016.

Figure 3 Estimated adult imprisonment rates by jurisdiction, 2015-16.

Estimates of imprisonment rate per 100,000 adult population based on ABS Corrective Services Australia (4512.0).

Sentenced Prisoners

On 30 June 2016, sentenced prisoners represented 72% of those in custody. Of these, 38% had a sentence of less than 12 months.

During 2015-16, sentenced prisoners represented 59% of the receptions and 71% of the daily average number of prisoners in adult correctional institutions.

The average sentence length for prisoners sentenced to imprisonment during 2015-16 (excluding prisoners with life sentences) was 284 days which is 17 days longer than for the previous year (267 days). The median sentence length for these prisoners was 134 days in 2015-16, which is 11 days more than the median length for 2014-15. The average sentence length for Indigenous prisoners sentenced to imprisonment in 2015-16 was 248 days.

The most common offence³ type for sentenced episode commencements was 'acts intended to cause injury' which represented 46% of the commencements. The average aggregate sentence length was 267 days (which is slightly more than the previous year's average of 258 days). The longest average aggregate sentences were recorded for 'murder' (life), 'manslaughter and driving causing death' (3,242 days) and 'sexual assault and related offences' (1,810 days).

The average sentence length for all sentenced prisoners held in custody during 2015-16 (excluding prisoners with life sentences) was 507 days and the median sentence length was 180 days.

Offence

The most common offences⁴ for prisoners held in custody on 30 June 2016 were 'acts intended to cause injury' (47% of prisoners), followed by 'sexual assault and related offences' (11% of prisoners) and 'offences against justice procedures, government security and operations' (8% of prisoners).

Last Known Address

Alice Springs was the most common last known address for prisoners held in custody on 30 June 2016, representing 19% (310) of prisoners in custody. This was followed by Casuarina 8% (137) and Palmerston 7% (119).

³ Most serious offence as determined from IOMS and IJIS.

⁴ The most serious offence for the custody episode as recorded in IOMS.

Indigenous Status

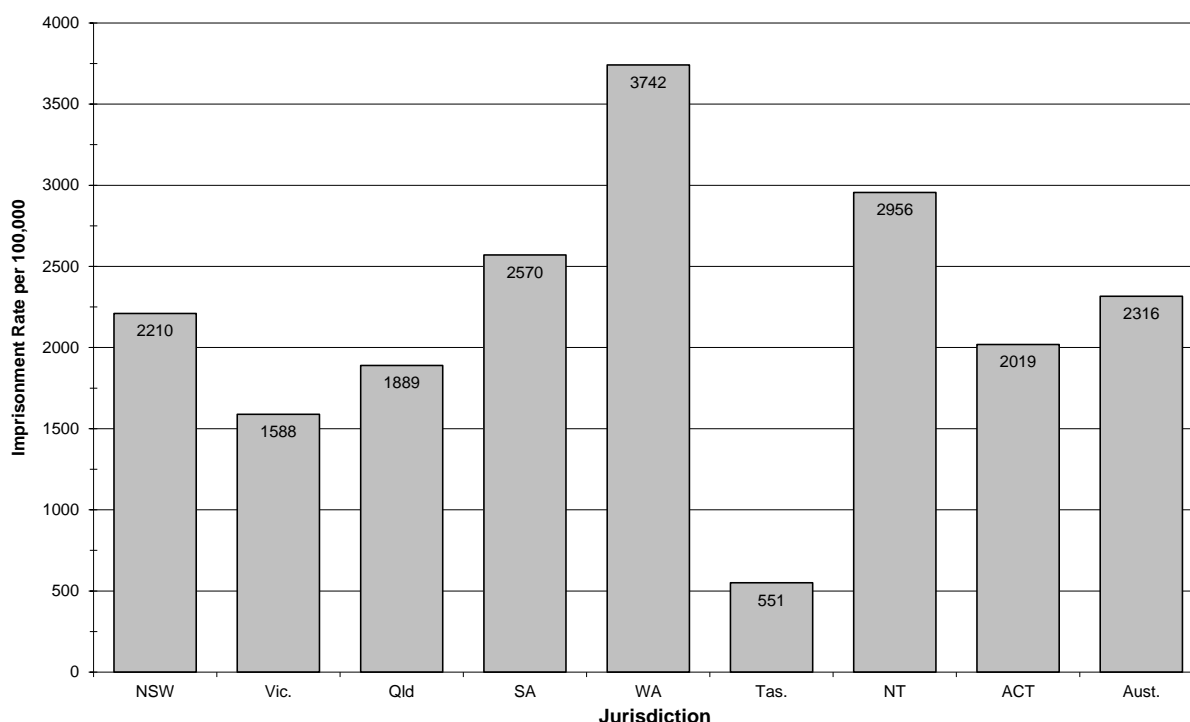
The daily average number of Indigenous prisoners in custody during 2015-16 was 1,396 which represented 84% of the total daily average.

On 30 June 2016, there were 1,390 Indigenous prisoners in custody in an adult correctional institution in the Northern Territory, which represented 84% of total prisoners.

The figure below shows that the 2015-16 estimated rate of imprisonment of Indigenous adults in the Northern Territory was 2,956 persons per 100,000 Indigenous adults, which is 28% more than the national average of 2,316 persons per 100,000 Indigenous adults.

The estimated 2015-16 Northern Territory non-Indigenous rate of imprisonment was 181 per 100,000 non-Indigenous adults, compared with the national rate of 150 per 100,000⁵.

Figure 4 Estimated adult Indigenous imprisonment rates by jurisdiction, 2015-16.



Estimates of imprisonment rate per 100,000 adult Indigenous population based on ABS Corrective Services Australia (4512.0).

Age

The average age of distinct prisoners received into custody during 2015-16 was 33 years. There were 36 distinct prisoners received into custody who were aged 60 years or older, with the oldest prisoner aged 79 at reception.

Sex

On 30 June 2016, there were 126 female prisoners in custody, which represented 8% of the Northern Territory prison population. During 2015-16, there were 277 sentenced female receptions, a 7% decrease compared with the previous year (299).

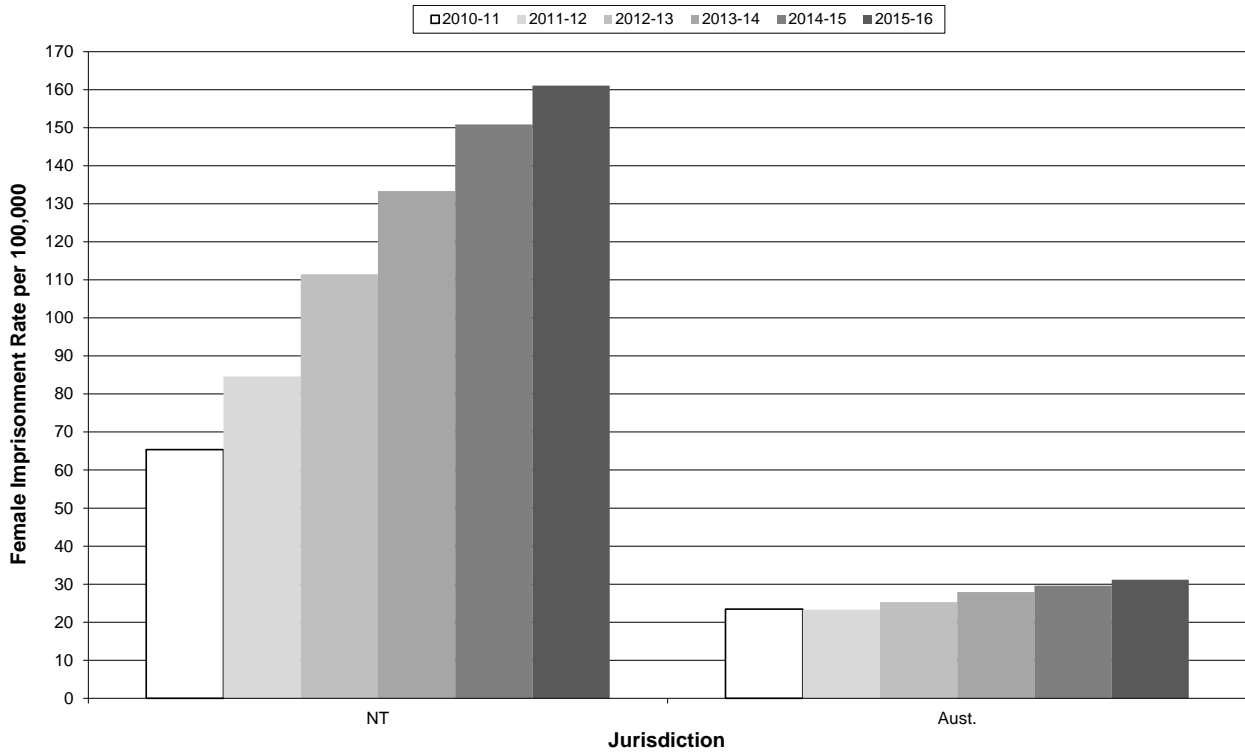
The daily average number of adult females in custody during 2015-16 was 136, which was 6% higher than the previous year (128). During 2015-16, the average daily proportion of females in the Northern Territory prison population was 8.2% compared to the national average of 7.8% for the same period⁶.

⁵ The NT and national non-Indigenous adult population estimates for 2015-16 were derived from rates used in ABS (4512.0) Corrective Services Australia – June Quarter 2016.

⁶ Figures for 2015-16 - Estimates based on ABS Corrective Services Australia – June Quarter 2016.

The estimated Northern Territory female imprisonment rate for 2015-16 was 161 per 100,000 adult females, an increase of 7% from the previous year. The estimated Australian rate for the same period was 31 per 100,000 adult females.

Figure 5 Estimated adult female imprisonment rates, 2010-11 to 2015-16.



Estimates of imprisonment rate per 100,000 adult female population based on ABS Corrective Services Australia (4512.0).

Marital Status

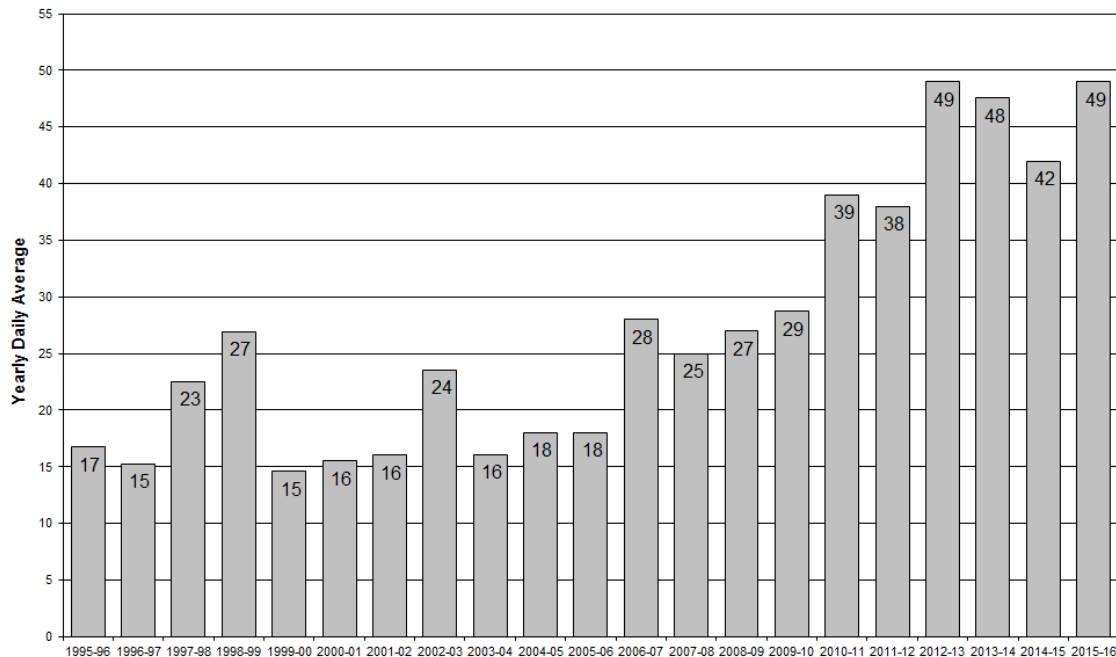
On 30 June 2016, 53% of the prisoners had stated at the time of their reception into custody, that they were married.

YOUTH DETAINEES

Population

As shown in the figure below, there has been considerable change in the annual daily average number of detainees held in youth detention centres in the Northern Territory over the past 20 years, with marked growth in the most recent decade.

Figure 6 Yearly daily average youth detainees from 1995-96 to 2015-16.



The daily

Note: Prior to June 2000, 17 year olds were classified as adults.

average number of detainees held in custody during 2015-16 was 49, which was an increase of 17% from the previous year.

The estimated detention rate for the Northern Territory was 184 per 100,000 youths aged between 10 and 17 years⁷.

The minimum number of detainees held in custody on any day during the year was 32 and the maximum was 71.

Table 2 Summary of youth detainee numbers in 2015-16 by detention centre.

Youth Detention Centre	Minimum	Maximum	Daily Average	Design Capacity	Average Occupancy Level
Don Dale Youth Detention Centre	19	55	38	55	69%
Alice Springs Youth Detention Centre	4	24	11	16	70%
All Centres	32	71	49	71	69%

⁷ Ten to seventeen year old population estimates were derived from ABS Estimated Resident Population (see ABS publication 3101.0 June 2016). The estimates include persons from 10 years old, up to but not including person 18 years old.

Receptions and Sentence Status

There were 530 receptions into youth detention centres in the Northern Territory in 2015-16, which involved 254 distinct youths.

Most youths are unsentenced at the time of reception into a detention centre. However during an episode, a detainee may commence several types of orders. Thus during 2015-16, there were 632 distinct order commencements consisting of 521 remand order commencements and 111 sentenced detention order commencements. The daily average number of sentenced detainees during 2015-16 was 15.

Offence

The most common offences⁸ for youths received into detention during 2015-16 were 'acts intended to cause injury' (39% of all receptions) and 'unlawful entry with intent/burglary, break and enter' (29% of all receptions). There was a 60% increase in the number of youths received into detention for 'dangerous or negligent driving' (from 15 offences in 2014-15 to 24 offences in 2015-16).

Indigenous Status

During 2015-16, 500 (94%) of the 530 youth receptions involved Indigenous detainees. Of the 111 sentenced youth receptions, 94% (104) were Indigenous.

Age

Of the 254 distinct detainees who commenced at least one episode in a youth detention centre during 2015-16, 32% were aged less than 15 years.

Sex

Most of the detainees received into a youth detention centre during 2015-16 were males. However, the number of receptions of female detainees rose increased 58 in 2014-15 (13% of 462 receptions) to 106 (20% of 530 receptions) in 2015-16.

⁸ Most serious offence as recorded in IOMS.

FOREIGN NATIONAL PRISONERS

Foreign national prisoners are often held in Northern Territory correctional institutions and are included in the counts as non-Indigenous. The yearly daily average number of foreign national prisoners reached a peak of 145 in 2000-01.

Between 1999-00 and 2002-03, the majority of foreign national prisoners held in Northern Territory correctional institutions were classified as 'people smugglers'. People smugglers are generally non-Australian citizens in custody for federal 'people smuggling' offences⁹. There was a rapid increase in the number of receptions of people smugglers during the 1999-00 financial year. During the period 1999-00 to 2001-02, people smugglers represented a significant proportion of the total custody population and a large proportion of the non-Indigenous custody population. The yearly daily average number of people smugglers reached a peak of 122 in 2000-01. In 2015-16, the daily average number of people smugglers was zero.

Table 3 Summary of estimated daily average foreign prisoners and detainees from 1996-97 to 2015-16.

Year/Quarter	Foreign Citizens			Total	% of All Prisoners and Detainees
	Federal Offence		Non-Federal Offence		
	People Smugglers	Other Federal			
1996-97	3	10	19	32	6%
1997-98	2	11	26	39	6%
1998-99	2	14	25	41	6%
1999-00	71	12	28	112	18%
2000-01	122	12	12	145	21%
2001-02	121	14	6	141	20%
2002-03	40	14	5	59	8%
2003-04	6	12	8	26	3%
2004-05	2	26	8	37	5%
2005-06	1	9	9	18	2%
2006-07	1	14	9	24	3%
2007-08	1	11	8	21	3%
2008-09	1	8	13	22	2%
2009-10	na	na	na	na	na
2010-11	18	7	24	49	4%
2011-12	35	8	21	64	5%
2012-13	28	5	19	52	3%
2013-14	3	8	20	31	2%
2014-15	1	9	27	37	2%
2015-16	0	9	31	40	2%
Sep. qtr 2015	0	9	33	41	3%
Dec. qtr 2015	0	9	34	43	3%
Mar. qtr 2016	0	8	29	38	2%
Jun. qtr 2016	0	9	26	35	2%

na – not available.

⁹ Most serious offence as recorded in IOMS.

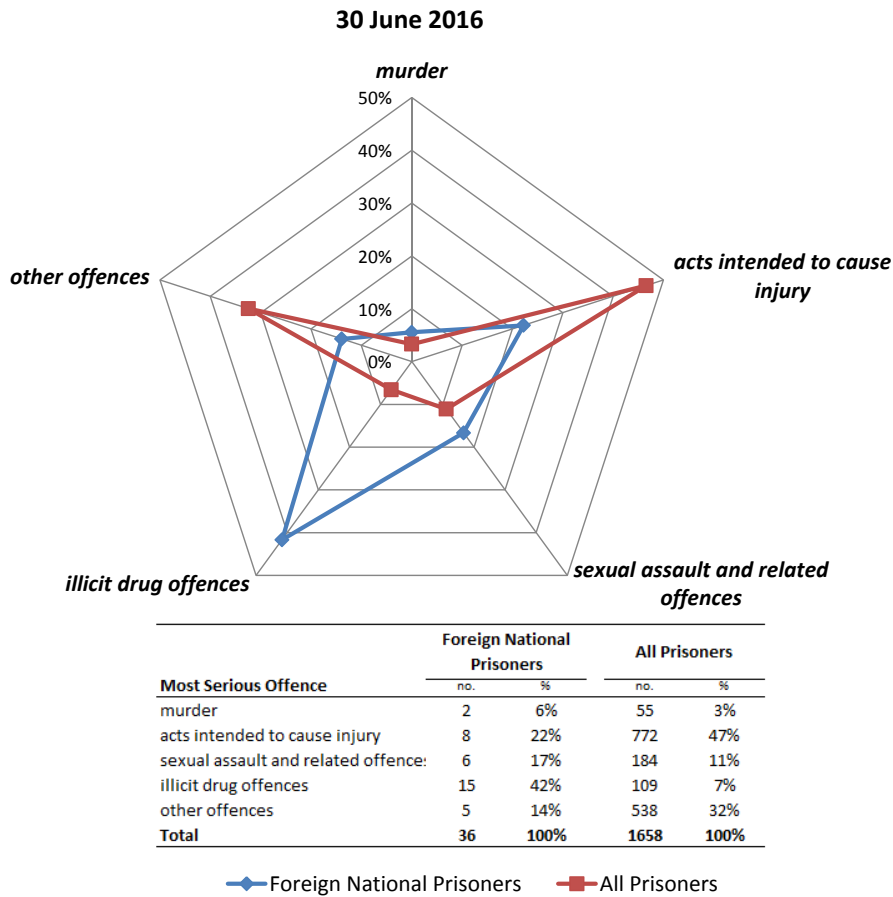
Adult Prisoners

On 30 June 2016, there were 36 foreign nationals in custody in an adult correctional institution, representing 2% of the total adult correctional institution population.

Youth Detainees

On 30 June 2016, there were no foreign national youths in custody in a correctional institution.

Figure 7 Distribution of selected 'most serious offences' for foreign national prisoners and all adult prisoners

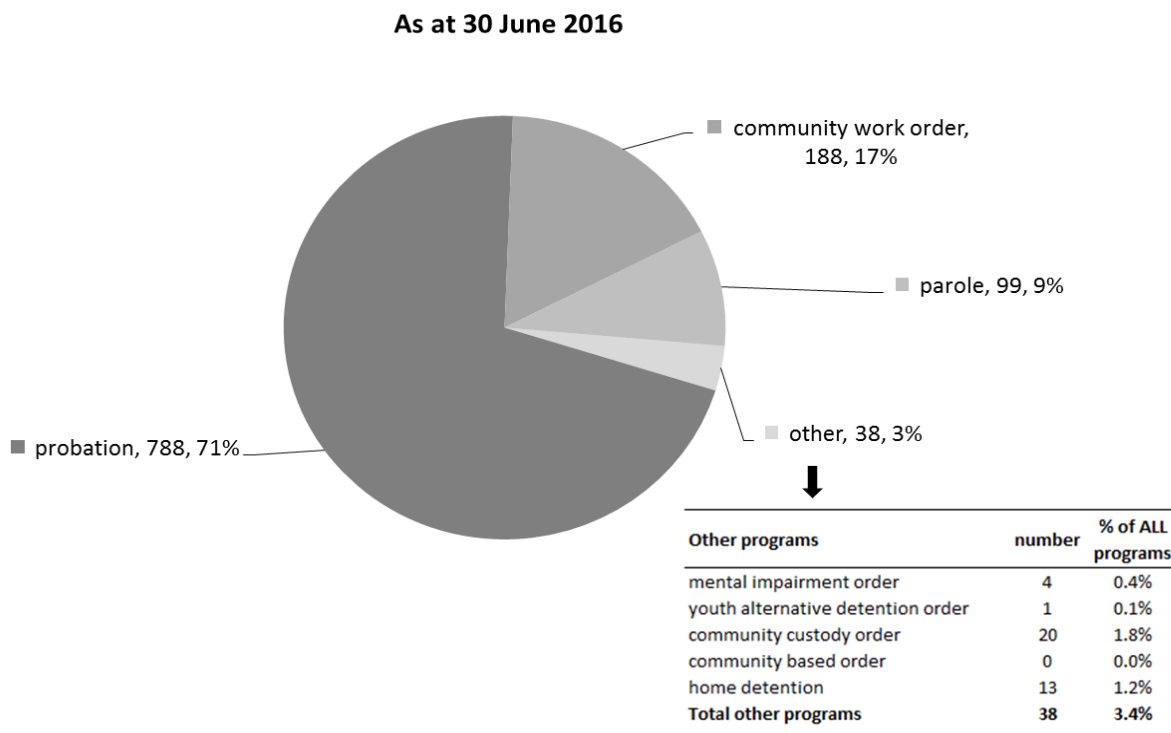


COMMUNITY CORRECTIONS PROGRAMS

Program Caseload

As at 30 June 2016, the Community Corrections caseload in the Northern Territory consisted of 975 adult programs and 138 youth programs. Of these, 788 (71%) were for probation orders (ie. order of release on bond/good behaviour OR order of suspending a sentence with a supervision condition) and 188 (17%) were community work orders.

Figure 8 Community Corrections program caseload (adult and youth)



Commencements

During 2015-16, there were 1,874 community-based program commencements, 9% (152) more than the previous year. The number of probation orders increased by 21% (192) and home detention/youth alternative detention orders increased by 26% (7). Probation orders were the most common community-based commencement comprising 60% (1,116) followed by community work orders, comprising 27% (510).

Indigenous Status

Indigenous people represented 84% (1,577) of the community-based program commencements.

Age

The majority (1,583 or 84%) of community-based program commencements were for adults. The average and median age for distinct persons who commenced a community-based program during 2015-16 was 29 years and 27 years respectively. The youngest person to commence an order was 11 years and the oldest was 66 years.

Sex

Females comprised 18% (338) of the community-based program commencements for 2015-16.

PERFORMANCE

The following table contains information produced by the Steering Committee for the Review of Commonwealth/State Service Provision (SCRCSSP) contained in the 'Report on Government Services, 2017', which compares service delivery performance across jurisdictions in Australia. Each jurisdiction provides standard information by which comparisons can be made. For corrective services, performance is categorised according to efficiency or effectiveness. Key focus areas mentioned above are addressed by at least one indicator and a selection of summary indicators are presented in the following table.

The information presented in the following table for other jurisdictions is for 2015-16. The Agency uses many of the findings from this exercise to establish benchmarks for its own business planning exercises.

In many instances, the Northern Territory differs from other jurisdictions. These unique characteristics include the small general population of which a high proportion is comprised of Indigenous persons, dispersion of the population and remoteness, which results in higher costs for goods and services, and the physical location of the Northern Territory in comparison to other states.

It should also be noted that some of the indicators used in the following table might differ from those used elsewhere in this Annual Report. This may be due to differences between jurisdictions in accrual or cash accounting processes and the exclusion of youth justice from the SCRCSSP exercise.

As can be seen, the Northern Territory compares reasonably with other jurisdictions in most of the performance indicators mentioned above. The measure of recidivism is seen to be a partial measure of the whole justice system, not just the correctional system. It is recognised that the rates of recidivism are influenced by many factors outside the justice system, including education, employment and social conditions. The measures of recidivism used are limited in that they do not consider the types of re-offending, only follow a person within the same jurisdiction in which they completed the original corrections program and do not include any offences which result in an outcome not administered by correctional services.

Table 4 National Performance Indicators.

Performance Indicators	2015-16									2014-15
	NSW	Vic	Qld	WA	SA	Tas	ACT	NT	Aust.	NT
Justice System - Recidivism rate										
Prisoners returning to prison ¹	50.7	42.8	39.7	38.1	36.9	39.8	41.0	58.3	44.6	59.5
Offenders returning to a Community Corrections program ²	12.1	21.1	15.8	10.6	12.1	19.2	15.4	11.1	14.8	9.3
Prisons										
Descriptive										
Daily average population	12 305	6 320	7 522	5 850	2 870	524	402	1 664	37 456	1 599
Imprisonment rate per 100,000 relevant population ³	206.4	134.7	201.2	291.2	213.8	129.8	131.6	921.7	201.0	884.9
Useable prison capacity	10 244	na	7 164	5 234	na	641	439	1 648	25 370	10 244
Effectiveness										
(containment and supervision)										
Escape rate ⁴ (per 100 prisoners)										
Open	0.23	0.57	0.90	0.67	0.33	–	–	1.07	0.46	1.33
Secure	0.05	0.09	–	0.08	–	0.39	0.25	0.22	0.06	0.11
Death rate by apparent unnatural causes ⁵	0.05	0.03	0.04	0.10	0.07	–	0.25	0.06	0.06	–
Rate of assaults on:										
Prisoners by prisoners										
Serious Assault	0.59	1.09	2.25	0.84	1.29	1.53	0.75	0.06	na	0.13
Assault	23.68	16.14	7.09	3.74	8.29	8.97	16.92	3.31	na	3.06
Officers by Prisoners										
Serious Assault	–	0.05	0.01	0.17	–	0.38	–	–	na	–
Assault	1.95	2.01	0.90	1.35	0.28	3.44	–	0.06	na	–
(offender care) - Out of cell hours	7.8	11.1	10.3	12.5	9.6	8.6	9.0	12.1	9.9	16.6
(reparation) - Proportion of prisoners employed	80.4	87.5	68.9	66.0	71.2	53.4	71.1	79.3	74.9	74.7
(rehabilitation) - Proportion of prisoners in education	32.2	34.1	35.6	28.5	67.4	14.4	72.3	24.4 ⁶	34.4	14.1 ⁶
Efficiency - (resource management)										
% of total utilisation	120.1	na	105.0	111.8	na	81.7	91.6	101.0	111.4	107.2
Costs per prisoner per day ^{7,8} (\$)	166.94	289.83	177.26	250.48	195.45	311.87	307.73	198.86	209.96	211.48
Community Supervision										
Descriptive										
Daily average population ^{9,10}	17 450	13 485	18 004	4 577	6 034	1 920	914	1 136	63 521	1 165
Community supervision rate per 100,000 relevant population ³	292.7	287.4	481.6	227.8	449.5	475.6	299.2	629.2	340.9	644.7
Effectiveness										
(containment and supervision) - % of people who successfully completed a community supervision order										
	74.0	66.2	77.7	60.9	67.0	85.0	72.8	73.4	72.8	69.0
(reparation) Ratio of ordered to worked hours										
	na	3.4	2.1	1.7	3.5	na	1.9	2.0	1.9	1.8
Efficiency - (resource management)										
Costs per offender per day ^{7,8} (\$)	21.62	25.60	12.69	41.84	17.80	13.19	34.75	48.78	21.45	43.50
Offender to operational staff ratio	21.3	14.4	37.5	14.3	26.3	27.6	14.5	10.6	21.0	11.7

na – not available

- – nil or rounded to 0

Notes for Table 4:

1. All prisoners released following a period of sentenced imprisonment who return to prison in the same jurisdiction within 2 years of their release.
2. Offenders returning to a community corrections program in the same jurisdiction within 2 years of them successfully completing a program.
3. Relevant population refers to all persons aged 18 years and over in all states and territories with the exception of Queensland where the adult population is aged 17 years and over.
4. Per 100 prisoners and refers to prisoners, not incidents. Rate is determined by the number of prisoners divided by prisoner daily average (open or secure).
5. Per 100 prisoners and is determined by the number of deaths divided by the prisoner daily average.
6. Figures are based on the number of prisoners in education on a single day, calculated against the number of prisoners in custody on that day (generally based on data from the last day of term prior to 30 June each year).
7. Excludes operating revenues, payroll tax and expenditure on prisoner health and on transport and escort services where able to be disaggregated by jurisdictions.
8. Capital costs not included.
9. Community supervision counts distinct persons not orders and for the Northern Territory, home detention clients are included in this group.
10. Northern Territory figures do not include clients whose order has been in suspense (breach) for three years or more.

SUPPORTING TABLES

CENSUS OF ADULT PRISONERS AS AT 30 JUNE 2016

Table 5 Census of prisoners by correctional institution, sentence status, Indigenous status and gender.

Correctional institution/ Sentence Status	Indigenous		Non-Indigenous		All		Total 2016		Total 2015	
	Male	Female	Male	Female	Male	Female	Number	% of Total	Number	% of Total
Alice Springs Correctional Centre										
Sentenced	363	35	31	3	394	38	432		421	
Unsentenced	119	15	13	1	132	16	148		159	
Total	482	50	44	4	526	54	580	35.0%	580	36.7%
Darwin Correctional Centre										
Sentenced	492	36	140	8	632	44	676		601	
Unsentenced	223	18	59	10	282	28	310		311	
Total	715	54	199	18	914	72	986	59.5%	912	57.7%
Barkly Work Camp										
Sentenced	56	0	0	0	56	0	56		53	
Unsentenced	0	0	0	0	0	0	0		0	
Total	56	0	0	0	56	0	56	3.4%	53	3.4%
Datjala Work Camp										
Sentenced	33	0	3	0	36	0	36		35	
Unsentenced	0	0	0	0	0	0	0		0	
Total	33	0	3	0	36	0	36	2.2%	35	2.2%
Total 30 June 2016										
Sentenced	944	71	174	11	1118	82	1200			
Unsentenced	342	33	72	11	414	44	458			
Total	1286	104	246	22	1532	126	1658	100%		
Total 30 June 2015										
Sentenced	857	85	160	8	1017	93			1110	
Unsentenced	345	44	73	8	418	52			470	
Total	1202	129	233	16	1435	145			1580	100%

Sentenced – Includes prisoners detained in custody at the Administrator's pleasure and persons in custody for fine default.

- There were 5% more prisoners in custody in Northern Territory correctional institutions on 30 June 2016 than for the same day last year.
- Males represented 92% of the prisoners on 30 June 2016.
- On 30 June 2016, 72% of prisoners were sentenced.
- The number of sentenced prisoners increased by 8% whereas unsentenced prisoners decreased by 3% compared to the previous year.
- Indigenous prisoners represented 84% of the total prison population on the nights of 30 June 2015 and 30 June 2016.

Table 6 Census of prisoners by correctional institution and employment status at time of reception.

Correctional institution	Employment Status				Total	
	Employed	Unemployed	Other	Not Stated	2016	2015
Alice Springs Correctional Centre	154	406	19	1	580	580
Darwin Correctional Centre	243	603	136	4	986	912
Barkly Work Camp	10	43	3	0	56	53
Datjala Work Camp	4	25	7	0	36	35
Total 30 June 2016	411	1077	165	5	1658	
Total 30 June 2015	410	1049	118	3		1580

Other – Includes students, pensioners and home duties.

- On 30 June 2016, 65% of prisoners held in custody indicated that they were unemployed at time of reception.

Table 7 Census of prisoners by correctional institution and age.

Correctional institution	Age Group (years)							Total	
	<18	18-19	20-29	30-39	40-49	50-59	60+	2016	2015
Alice Springs Correctional Centre	0	25	210	195	110	35	5	580	580
Darwin Correctional Centre	0	22	339	309	215	80	21	986	912
Barkly Work Camp	0	1	24	23	6	2	0	56	53
Datjala Work Camp	0	0	10	17	8	1	0	36	35
Total 30 June 2016	0	48	583	544	339	118	26	1658	
Total 30 June 2015	2	56	529	542	318	107	26		1580

- On 30 June 2016, 26 prisoners aged 60 years or more were in custody, of who the eldest was 71 years old.
- On 30 June 2016, 68% of prisoners held in custody were between 20 and 39 years of age.

Table 8 Census of prisoners by correctional institution and marital status.

Correctional institution	Marital Status					Total	
	Never Married	Married	Separated Divorced	Widowed	Unknown	2016	2015
Alice Springs Correctional Centre	220	324	34	1	1	580	580
Darwin Correctional Centre	424	496	57	8	1	986	912
Barkly Work Camp	20	31	5	0	0	56	53
Datjala Work Camp	9	20	5	2	0	36	35
Total 30 June 2016	673	871	101	11	2	1658	
Total 30 June 2015	663	796	109	12	0		1580

- On 30 June 2016, 53% of prisoners held in custody stated at the time of their reception that they were married.

Table 9 Census of sentenced prisoners by correctional institution and aggregate sentence.

Correctional institution	Aggregate Sentence									Total		
	Months			Years			Indefinite			Number	Days	
	<1	1<3	3<6	6<12	1<2	2<5	5+	Other	Life		Mean	Median
Alice Springs Correctional Centre	20	30	83	93	83	60	48	3	12	432	708	305
Darwin Correctional Centre	10	41	62	77	84	191	169	14	28	676	1362	914
Barkly Work Camp	0	1	10	13	25	7	0	0	0	56	453	426
Datjala Work Camp	0	0	2	13	8	7	6	0	0	36	926	471
Total 30 June 2016	30	72	157	196	200	265	223	17	40	1200	1065	547
Total 30 June 2015	17	76	153	189	181	227	208	19	40	1110	1055	502

Aggregate sentence – The longest period that the offender may be detained under sentence in the current episode.

Other – Includes prisoners detained at the Administrator's pleasure, indefinite sentences subject to Judicial Review and post detention orders.

Days (Mean, Median) – Does not include indeterminate sentences (Life, Administrator's Pleasure and indefinite sentence).

- There was an increase of 8% in the number of sentenced prisoners held on 30 June 2016 compared with 30 June 2015.
- On 30 June 2016, 23% of the sentenced prisoners held in custody had an aggregate sentence of five years or longer (including life sentences).
- There was a 76% increase in the number of prisoners with an aggregate sentence of less than 1 month on 30 June 2016, compared with 30 June 2015.
- Prisoners with an aggregate sentence of 12 months or less, comprised 38% of total sentenced prisoners.
- The median aggregate sentence of sentenced prisoners held at the Barkly Work Camp increased by 55% from the same time last year.

Table 10 Census of prisoners by correctional institution, last known address and Indigenous status.

Last Known Address	Alice Springs Correctional Centre		Darwin Correctional Centre		Barkly Work Camp		Datjala Work Camp		Total	
	Indigenous	Non-Indig	Indigenous	Non-Indig	Indigenous	Non-Indig	Indigenous	Non-Indig	2016	2015
Adelaide River	0	0	3	3	0	0	0	0	6	7
Ali Curung	15	0	6	0	3	0	0	0	24	26
Alice Springs	206	27	50	6	13	0	8	0	310	285
Alyangula	0	0	40	0	0	0	1	0	41	43
Avon Downs	1	0	0	0	0	0	0	0	1	0
Batchelor	0	0	6	3	0	0	0	0	9	10
Borrooloola	0	0	19	0	1	0	2	0	22	19
Casuarina	2	3	79	50	0	0	2	1	137	136
Daly River	0	0	5	2	0	0	0	0	7	5
Darwin	4	3	50	38	0	0	1	0	96	117
Elliot	2	0	5	0	1	0	0	0	8	7
Harts Range	16	1	3	0	2	0	0	0	22	24
Hermannsburg	31	0	8	0	4	0	0	0	43	40
Humpty Doo	0	2	14	16	0	0	1	0	33	26
Jabiru	0	0	4	0	0	0	0	0	4	5
Kalkaringi	0	0	11	0	0	0	0	0	11	12
Katherine	4	0	86	9	2	0	5	0	106	101
Kintore	21	0	5	0	3	0	0	0	29	22
Kulgera	8	0	3	0	0	0	1	0	12	14
Lajamanu	4	0	9	0	0	0	1	0	14	15
Maningrida	1	0	35	1	0	0	0	0	37	23
Maranboy	0	0	24	0	0	0	1	0	25	32
Mataranka	1	0	8	0	0	0	0	0	9	10
Ngukurr	0	0	34	1	0	0	1	0	36	41
Nhulunbuy	0	1	33	2	0	0	3	0	39	28
Oenpelli	0	0	23	0	0	0	1	0	24	19
Palmerston	3	2	68	44	0	0	2	0	119	96
Papunya	40	0	6	0	0	0	0	0	46	40
Pine Creek	0	0	1	0	0	0	1	0	2	1
Pirlangimpi	0	0	6	0	0	0	0	0	6	0
Tennant Creek	72	1	16	0	14	0	0	0	103	98
Ti Tree	19	0	4	0	8	0	0	0	31	34
Timber Creek	1	0	7	0	0	0	0	0	8	14
Tiwi Islands	0	0	1	0	0	0	0	0	1	0
Wadeye	0	0	52	0	0	0	1	0	53	57
Wurrumiyanga	0	0	8	0	0	0	0	0	8	11
Yuendumu	39	0	9	0	4	0	0	0	52	49
Yulara	28	0	2	0	1	0	0	0	31	21
NT Unknown	0	0	0	1	0	0	0	0	1	8
Interstate	14	8	7	32	0	0	1	2	64	54
Overseas	0	0	0	7	0	0	0	0	7	1
No fixed abode	0	0	19	2	0	0	0	0	21	29
Total 2016	532	48	769	217	56	0	33	3	1658	
Total 2015	712	200	537	43	53	0	29	6		1580

Last known address – As recorded in IOMS and aggregated into Police districts.

- Alice Springs was the most common last known address for prisoners held in custody on 30 June 2016, representing 19% (310) of prisoners in custody. This was followed by Casuarina 8% (137) and Palmerston 7% (119).

Table 11 Census of prisoners by offence and sentence status.

Most Serious Offence	Sentenced		Unsentenced		Total	
	2016	2015	2016	2015	2016	2015
Homicide and related offences						
Murder	41	42	14	14	55	56
Attempted Murder	3	3	4	3	7	6
Manslaughter and driving causing death	48	48	1	1	49	49
Acts intended to cause injury	519	475	253	287	772	762
Sexual assault and related offences	131	123	53	48	184	171
Dangerous or negligent acts endangering persons						
Driving under the influence of alcohol or drugs	0	0	0	2	0	2
Dangerous or negligent driving	13	12	8	2	21	14
Other	32	23	2	2	34	25
Abduction and related offences	2	5	5	2	7	7
Robbery extortion and related offences	30	26	9	9	39	35
Unlawful entry with intent	55	48	25	20	80	68
Theft and related offences						
Motor vehicle theft and related offences	4	14	3	4	7	18
Other	7	4	1	0	8	4
Deception and related offences	9	9	4	2	13	11
Illicit drug offences	57	45	52	46	109	91
Weapons and explosive offences	2	2	7	4	9	6
Property damage and environmental pollution	41	30	4	8	45	38
Public order offences	6	7	1	0	7	7
Road traffic and motor vehicle regulatory offences						
Driving licence offences	36	36	0	0	36	36
Exceeding the prescribed content of alcohol	26	29	5	4	31	33
Other	2	1	0	1	2	2
Offences against justice procedures, gov't security and operations						
Breach of justice order	130	123	7	7	137	130
Other	6	2	0	3	6	5
Miscellaneous offences	0	3	0	1	0	4
Other	0	0	0	0	0	0
Total 30 June 2016	1200		458		1658	
Total 30 June 2015		1110		470		1580

Most serious offence – As recorded in IOMS.

Sentenced – Includes prisoners detained at the Administrator's pleasure, indefinite sentences subject to Judicial Review, post detention orders and fine default.

- The most common offence type for people held in custody on 30 June 2016 was 'acts intended to cause injury' which represented 47% of the total prisoner population. This was followed by 'sexual assault and related offences' representing 11%.
- There was a 9% increase in the number of sentenced people in custody on 30 June 2016 for 'acts intended to cause injury' ie. 519 compared with 475 in 2015.

Table 12 Census of prisoners by correctional institution, Indigenous status and type of sentence.

Correctional Institution	Unsentenced	Sentenced						Total	
		Fine Default	Fixed Term	Max-Min	Indefinite			2016	2015
					Parole	Other	Life		
Alice Springs Correctional Centre									
Indigenous	134	1	210	179	4	3	1	532	537
Non-Indigenous	14	0	3	24	6	0	1	48	43
Total	148	1	213	203	10	3	2	580	580
Darwin Correctional Centre									
Indigenous	241	0	149	354	15	10	0	769	712
Non-Indigenous	69	0	20	111	11	4	2	217	200
Total	310	0	169	465	26	14	2	986	912
Barkly Work Camp									
Indigenous	0	0	26	30	0	0	0	56	53
Non-Indigenous	0	0	0	0	0	0	0	0	0
Total	0	0	26	30	0	0	0	56	53
Datjala Work Camp									
Indigenous	0	0	16	17	0	0	0	33	29
Non-Indigenous	0	0	0	3	0	0	0	3	6
Total	0	0	16	20	0	0	0	36	35
Total 30 June 2016									
Indigenous	375	1	401	580	19	13	1	1390	
Non-Indigenous	83	0	23	138	17	4	3	268	
Total	458	1	424	718	36	17	4	1658	
Total 30 June 2015									
Indigenous	389	1	411	498	17	14	1		1331
Non-Indigenous	81	0	21	120	19	5	3		249
Total	470	1	432	618	36	19	4		1580

Fine default – Those prisoners who are serving a sentence for non-payment of a fine and are subject to no other sentence at the time. Offenders who are serving fine default sentences while on remand are counted as sentenced (fine default) prisoners.

Max-Min – Maximum term specified and minimum term or non-parole period set.

Fixed term – No post-release follow-up period set.

Indefinite - Other – Includes prisoners detained at the Administrator's pleasure, subject to Judicial Review and post detention.

Indefinite -Parole – Prisoners who have received a life sentence with a non-parole period set.

- Of those who were unsentenced, 82% were Indigenous.
- Indigenous prisoners comprised 95% of those with fixed term sentences and 81% of those with max-min sentences.
- There was a 16% increase in the number of 'Max-Min' sentences on 30 June 2016, ie 718 compared to 618 in 2015. 'Max-Min' sentences represented the most common type of sentence.

ADULT PRISONER AND YOUTH DETAINEE TURNOVER DURING 2015-16**Table 13 Adult and youth turnover summary.**

		Indigenous		Non-Indigenous		Total	
		Male	Female	Male	Female	2015-16	2014-15
Held at 30 June 2015	Adult	1202	129	233	16	1580	1482
	Youth	30	5	3	0	38	51
Received during 2015-16	Adult	3209	466	526	72	4273	4128
	Youth	400	100	24	6	530	462
Adult to youth	Youth	0	1	0	0	1	0
Youth to adult	Youth	4	0	1	0	5	14
Releases during 2015-16	Adult	3129	490	514	66	4199	4044
	Youth	393	104	24	6	527	461
Held at 30 June 2016	Adult	1286	104	246	22	1658	1580
	Youth	33	2	2	6	37	38

Youth to adult – Youths attaining adult status while detained.

Adult to youth - One offender was re-identified as a youth following validation of the offender's date of birth.

Table 14 Adult and youth escapes (incidents and persons).

	Financial Year	Alice Springs Correctional Centre	Darwin Correctional Centre	Barkly Work Camp ¹	Datjala Work Camp ²	Youth Detention Centres	Total
Incidents	2015-16	4	6	1	1	2	14
	2014-15	5	3	2	1	8	19
	2013-14	2	3	9	-	1	15
	2012-13	1	2	2	-	1	6
	2011-12	2	1	2	-	3	8
	2010-11	5	2	0	-	1	8
	2009-10	3	1	-	-	1	5
	2008-09	2	1	-	-	0	3
	2007-08	1	0	-	-	0	1
	2006-07	3	1	-	-	2	6
	2005-06	2	2	-	-	2	6
	2004-05	2	0	-	-	1	3
	2003-04	1	1	-	-	0	2
	2002-03	2	0	-	-	0	2
	2001-02	2	1	-	-	1	4
	2000-01	2	0	-	-	0	2
	1999-00	0	0	-	-	2	2
	1998-99	0	0	-	-	0	0
	1997-98	0	1	-	-	1	2
	Persons	2015-16	5	11	1	1	4
2014-15		5	3	2	2	17	29
2013-14		2	4	18	-	4	28
2012-13		1	2	6	-	2	11
2011-12		2	2	2	-	9	15
2010-11		7	2	0	-	1	10
2009-10		3	1	-	-	1	5
2008-09		2	2	-	-	0	4
2007-08		1	0	-	-	0	1
2006-07		4	1	-	-	4	9
2005-06		2	5	-	-	3	10
2004-05		2	0	-	-	1	3
2003-04		1	1	-	-	0	2
2002-03		2	0	-	-	0	2
2001-02		2	1	-	-	2	5
2000-01		2	0	-	-	0	2
1999-00		0	0	-	-	2	2
1998-99		0	0	-	-	0	0
1997-98		0	1	-	-	2	3

Escapes include incidents that occur under escort and from hospital.

Note: 1. The Barkly Work Camp commenced operation in April 2011.

2. Escape data for the Datjala Work Camp was not recorded until after 1 July 2014 when the Camp located to a permanent site in Nhulunbuy. Prior to 1 July 2014, any escapes from the Datjala Work Camp were included in Darwin Correctional Centre figures.

Table 15 Adult and youth receptions by sentence status, Indigenous status and sex.

Correctional Institution	Sentenced				Unsentenced				Total	
	Indigenous		Non-Indigenous		Indigenous		Non-Indigenous		2015-16	2014-15
	Female	Male	Female	Male	Female	Male	Female	Male		
Adult										
Alice Springs Correctional Centre	164	1194	6	77	85	310	5	67	1908	1726
Darwin Correctional Centre	88	934	19	175	129	771	42	207	2365	2402
Total 2015-16	252	2128	25	252	214	1081	47	274	4273	4128
Total 2014-15	280	2188	19	213	190	963	28	247		
Youth										
Alice Springs Youth Detention Centre	5	49	0	0	26	102	0	0	182	157
Don Dale Youth Detention Centre	10	40	0	7	59	209	6	17	348	305
Total 2015-16	15	89	0	7	85	311	6	17	530	
Total 2014-15	13	67	0	5	43	309	2	23		462
Total All 2015-16	267	2217	25	259	299	1392	53	291	4803	
Total All 2014-15	293	2255	19	218	233	1272	30	270		4590

Sentenced – If any portion of an episode is sentenced as at the reporting date, then it is classified as a sentenced reception.

- There was a 32% increase in the number of non-Indigenous sentenced female receptions and a 68% increase in the number of unsentenced female receptions in adult correctional centres in 2015-16 compared with the previous year.
- There was a 98% increase in the number of unsentenced Indigenous females into adult correctional centres during 2015-16 compared with the previous year.
- There was an 18% increase in the number of sentenced non-Indigenous males into adult correctional centres during 2015-16 compared with the previous year.
- There was a 15% increase in the number of receptions into youth detention centres in 2015-16 compared with the previous year. Most of these receptions (59%) were unsentenced Indigenous male youths.

ADULT PRISONERS DURING 2015-16

Table 16 Adult monthly daily average by correctional institution and sentence status.

	Darwin Correctional Centre		Alice Springs Correctional Centre		Barkly Work Camp		Datjala Work Camp		All		Total	
	Sentenced	Unsentenced	Sentenced	Unsentenced	Sentenced	Unsentenced	Sentenced	Unsentenced	Sentenced	Unsentenced	2015-16	2014-15
July	609	297	422	168	56	0	42	0	1130	465	1595	1504
August	602	280	435	170	63	0	46	0	1145	450	1595	1509
September	608	275	425	164	63	0	46	0	1141	438	1579	1540
October	625	279	403	178	59	0	48	0	1134	457	1591	1540
November	652	290	427	180	58	0	43	0	1180	469	1649	1587
December	676	304	451	162	64	0	37	0	1229	465	1694	1648
January	660	341	421	199	66	0	37	0	1184	539	1723	1661
February	665	343	443	203	60	0	36	0	1205	546	1751	1647
March	673	326	451	184	54	0	36	0	1215	510	1725	1635
April	670	336	421	186	58	0	32	0	1181	522	1703	1655
May	679	335	390	184	62	0	34	0	1164	519	1684	1635
June	686	324	413	164	55	0	34	0	1187	487	1675	1605
Indigenous 2015-16	508	242	390	164	59	0	35	0	991	406	1396	1361
Total 2015-16	650	311	425	178	60	0	39	0	1174	489	1663	
Total 2014-15	593	296	444	167	68	0	28	0	1133	463		1597

Note:

The figures represent the averages rounded to the nearest integer.

- There was a 4% increase in the yearly daily average compared to the previous year.
- The yearly daily average number of sentenced prisoners increased by 4% and unsentenced prisoners also increased by 6%.
- Indigenous prisoners represented 84% of the daily average.

Table 17 Adult releases by correctional institution, release reason and Indigenous status.

Release Reason	Alice Springs Correctional Centre		Darwin Correctional Centre		Barkly Work Camp		Datjala Work Camp		All Prisons		Total	
	Indigenous	Non-Indigenous	Indigenous	Non-Indigenous	Indigenous	Non-Indigenous	Indigenous	Non-Indigenous	Indigenous	Non-Indigenous	2015-16	2014-15
Appeal Upheld	2	1	1	1	0	0	0	0	3	2	5	0
Death	2	0	1	1	0	0	0	0	3	1	4	3
Deportation	0	0	0	4	0	0	0	0	0	4	4	6
Expiry Of Sent (Full Term)	871	30	725	76	110	0	13	1	1719	107	1826	1982
Extradition	2	9	3	11	0	0	0	0	5	20	25	15
Home Detention	0	0	6	3	0	0	0	0	6	3	9	8
Interstate Transfer	1	1	0	0	0	0	0	0	1	1	2	4
Other Discharge From Custody	312	54	701	169	0	0	4	0	1017	223	1240	1180
Parole	36	6	58	23	3	1	4	1	101	31	132	123
Supervised Bond	282	44	410	131	10	0	2	0	704	175	879	702
Under Appeal	2	0	1	1	0	0	0	0	3	1	4	5
Unknown - Discharge From Custody	29	4	27	8	0	0	1	0	57	12	69	16
Total 2015-16	1539	149	1933	428	123	1	24	2	3619	580	4199	
Total 2014-15	1448	81	1963	391	152	1	8	0	3571	473		3984
Prison Total 2015-16	1688		2361		124		26		4199			
Prison Total 2014-15	1529		2354		153		8		4044			

Other Discharge From Custody – These are predominantly prisoners released from court, ie bailed, released following finalisation of charges. Also includes releases on non-supervised bonds and community work orders.

- The total number of prisoners released increased by 4% compared with the previous year.
- Prisoners released for 'expiry of sent (full term)' decreased by 8% compared with the previous year.
- Prisoners released to 'supervised bond' increased by 25% compared with the previous year.

Table 18 Distinct adults received by correctional institution, age, sex and Indigenous status.

Age Group	Sex	Alice Springs Correctional Centre		Darwin Correctional Centre		Total	
		Indigenous	Non-Indigenous	Indigenous	Non-Indigenous	2015-16	2014-15
16 to 17 years	All	0	0	1	0	1	1
	Male	0	0	0	0	0	1
18 to 19 years	All	77	4	102	9	192	204
	Male	72	4	89	7	172	184
20 to 24 years	All	244	15	258	48	565	547
	Male	219	14	237	39	509	479
25 to 29 years	All	288	28	296	80	692	643
	Male	248	24	267	67	606	559
30 to 34 years	All	248	25	250	70	593	617
	Male	197	24	220	65	506	541
35 to 39 years	All	189	13	192	52	446	448
	Male	153	11	172	43	379	386
40 to 44 years	All	165	9	139	35	348	362
	Male	133	8	120	29	290	295
45 to 49 years	All	107	6	116	36	265	231
	Male	91	5	96	32	224	207
50 to 59 years	All	72	12	77	28	189	171
	Male	65	12	64	22	163	148
60 years and older	All	11	3	14	8	36	28
	Male	9	3	13	7	32	26
Average age	All	33	34	32	35	33	33
Total 2015-16	All	1401	115	1445	366	3327	
	Male	1187	105	1278	311	2881	
	Female	214	10	167	55	446	
Total 2014-15	All	1308	85	1512	347		3252
	Male	1103	77	1334	312		2826
	Female	205	8	178	35		426

Note: The age group and correctional institution is for the first reception for a distinct person. Youths aged 15 to 17 years can be accommodated in adult correctional institutions.

- The average age of distinct Indigenous adults received into custody in 2015-16 was 33 years and for distinct non-Indigenous adults it was 35 years.
- During 2015-16, there were 36 distinct persons aged 60 years or older received into custody, which represented 1% of distinct persons received. The eldest person received was 79 years of age.

Table 19 Distinct adults received by correctional institution, place of origin and Indigenous status.

Place of Origin	Alice Springs Correctional Centre		Darwin Correctional Centre		Total	
	Indigenous	Non-Indigenous	Indigenous	Non-Indigenous	2015-16	2014-15
Australia						
Adelaide River	0	0	2	0	2	4
Ali Curung	45	0	6	0	51	53
Alice Springs	753	27	38	5	823	734
Alyangula	0	0	52	0	52	57
Avon Downs	4	0	0	0	4	1
Batchelor	0	0	0	0	0	1
Borrooloola	3	0	6	0	9	6
Casuarina	0	0	0	0	0	2
Daly River	0	0	5	0	5	1
Darwin	18	1	444	57	520	536
Elliot	3	0	7	0	10	14
Haarts Range	35	0	0	0	35	39
Hermannsburg	34	0	2	0	36	30
Humpty Doo	0	0	1	0	1	2
Jabiru	0	0	1	0	1	7
Kalkaringi	1	0	18	0	19	21
Katherine	10	0	175	2	187	231
Kintore	6	0	0	0	6	4
Kulgera	6	0	0	0	6	7
Lajamanu	7	0	25	0	32	25
Manningrida	0	0	22	1	23	30
Maranboy	0	0	18	0	18	19
Mataranka	0	0	5	0	5	4
Ngukurr	0	0	19	0	19	26
Nhulunbuy	0	0	108	0	108	103
Oenpelli	0	0	14	0	14	16
Palmerston	0	0	1	0	1	2
Papunya	56	0	1	0	57	52
Pine Creek	0	0	3	0	3	2
Pirlangimpi	0	0	5	0	5	3
Tennant Creek	70	0	9	1	80	91
Ti Tree	49	0	0	0	49	47
Timber Creek	0	0	11	0	11	9
Tiwi Islands	0	0	0	0	0	1
Wadeye	0	0	30	0	30	43
Wurrumiyanga	1	0	21	0	22	12
Yuendumu	43	0	8	0	51	71
Yulara	5	0	0	0	5	7
NT Other	157	4	251	21	433	370
Interstate	79	60	94	188	421	362
Unknown	15	4	41	14	74	91
Total	1400	96	1443	289	3228	3136
Overseas						
Indonesia	0	0	0	2	2	3
New Zealand	0	4	0	14	18	27
United Kingdom	0	4	0	7	11	16
Other	0	12	0	56	68	70
Total	0	20	0	79	99	116
Total 2015-16	1400	116	1443	368	3327	
Total 2014-15	1308	85	1509	350		3252

Place of origin – Self reported location of origin, as recorded in IJIS and aggregated into Police Districts.

Note: The correctional institution is for the first reception for a distinct person.

- Interstate prisoners increased by 16% or 59 distinct prisoners from the previous year. They comprised 13% (421) of distinct prisoners received into an adult correctional centre during the year and 51% of total distinct non-Indigenous prisoners.
- The Alice Springs district represented 25% of distinct prisoner receptions, followed by Darwin (16%) and Katherine (6%).
- The number of Overseas locations decreased by 15% or 17 distinct prisoners from the previous year.

Table 20 Adult sentenced episode commencements by aggregate sentence, offence and Indigenous status.

Most Serious Offence		Aggregate Length											2015-16 Total	2014-15	
		Months				Years				Days		Total		Total	Mean
		0<1	1<3	3<6	6<12	1<2	2<5	5<10	10 +	Life*	mean				
Homicide and related offences															
Murder	All	-	-	-	-	-	-	-	-	2	life	life	2	2	life
	Indigenous	-	-	-	-	-	-	-	-	2	life	life	2	0	-
Attempted murder	All	-	-	-	-	-	-	-	-	-	-	-	0	1	life
	Indigenous	-	-	-	-	-	-	-	-	-	-	-	0	1	life
Manslaughter and driving causing death	All	-	-	-	-	-	1	4	2	-	3242	3097	7	13	3671
	Indigenous	-	-	-	-	-	1	4	2	-	3242	3097	7	12	3643
Acts intended to cause injury	All	22	226	444	250	161	66	8	-	1	267	177	1178	1216	258
	Indigenous	21	213	426	233	154	61	5	-	1	263	172	1114	1148	246
Sexual assault and related offences	All	-	-	1	-	7	18	10	6	-	1810	1459	42	48	1463
	Indigenous	-	-	-	-	6	9	7	4	-	1857	1496	26	36	1647
Dangerous or negligent acts endangering persons															
Driving under the influence of alcohol or drugs	All	-	-	2	2	-	-	-	-	-	192	193	4	5	128
	Indigenous	-	-	2	2	-	-	-	-	-	192	193	4	4	138
Dangerous or negligent driving	All	2	4	14	6	3	7	1	-	-	427	177	37	34	238
	Indigenous	2	3	12	6	3	6	-	-	-	359	165	32	31	240
Other Dangerous Acts	All	-	2	1	13	19	10	1	-	-	574	547	46	39	591
	Indigenous	-	2	1	13	15	3	1	-	-	504	432	35	30	545
Abduction, harassment and other offences against the person															
	All	1	-	2	1	1	-	-	-	-	198	133	5	13	362
	Indigenous	1	-	2	1	-	-	-	-	-	125	128	4	10	207
Robbery, extortion and related offences															
	All	-	3	-	-	5	12	3	2	-	1436	1195	25	15	866
	Indigenous	-	1	-	-	5	8	3	1	-	1458	1327	18	11	807
Unlawful entry with intent, burglary, break and enter	All	3	20	61	36	29	9	1	-	-	276	182	159	157	217
	Indigenous	3	20	60	34	27	8	1	-	-	270	182	153	146	209
Theft and related offences															
Illegal use of motor vehicle	All	2	8	9	1	1	-	-	-	-	117	106	21	24	125
	Indigenous	2	7	7	-	1	-	-	-	-	108	90	17	17	112
Theft other	All	15	8	9	5	2	-	2	-	-	205	80	41	34	145
	Indigenous	13	8	6	2	1	-	1	-	-	134	42	31	27	105
Fraud, deception and related offences	All	-	3	3	2	1	4	-	-	-	519	202	13	11	633
	Indigenous	-	1	-	2	-	-	-	-	-	173	202	3	4	197
Illicit drug offences	All	9	12	18	10	17	35	5	1	-	674	481	107	79	716
	Indigenous	4	8	10	7	7	5	1	-	-	375	180	42	28	374
Prohibited and regulated weapons and explosive offences	All	6	6	8	2	1	-	-	-	-	108	90	23	16	95
	Indigenous	6	6	8	2	1	-	-	-	-	108	90	23	16	95
Property damage and environmental pollution	All	15	15	22	6	3	12	-	-	-	295	117	73	57	278
	Indigenous	15	15	22	5	2	9	-	-	-	251	103	68	52	262
Public order offences	All	5	3	2	1	1	1	-	-	-	188	59	13	26	200
	Indigenous	4	3	1	1	-	-	-	-	-	72	49	9	20	140
Traffic and vehicle regulatory offences															
Driving licence offences	All	13	38	19	10	1	-	-	-	-	99	86	81	83	92
	Indigenous	11	36	19	10	1	-	-	-	-	102	86	77	83	92
Exceeding the prescribed content of alcohol	All	7	41	63	24	2	-	-	-	-	128	121	137	165	125
	Indigenous	5	40	62	24	2	-	-	-	-	131	121	133	162	125
Traffic other	All	-	-	-	-	-	-	-	-	-	-	-	0	3	27
	Indigenous	-	-	-	-	-	-	-	-	-	-	-	0	2	16
Offences against justice procedures, gov't security and gov't operations															
Breach of justice order	All	274	152	55	38	23	5	-	-	2	84	29	549	577	107
	Indigenous	253	140	52	32	19	4	-	-	1	80	29	501	533	106
Immigration offences	All	-	-	-	-	-	-	-	-	-	-	-	-	0	-
	Indigenous	-	-	-	-	-	-	-	-	-	-	-	-	0	-
Justice other	All	1	2	1	1	2	2	-	-	-	425	213	9	6	357
	Indigenous	-	1	-	-	2	-	-	-	-	435	576	3	5	78
Miscellaneous offences	All	-	-	-	-	-	-	-	-	-	-	-	0	2	135
	Indigenous	-	-	-	-	-	-	-	-	-	-	-	0	1	181
Total	All	375	543	734	408	279	182	35	11	5	284	134	2572	2626	267
	Indigenous	340	504	690	374	246	114	23	7	4	248	123	2302	2379	239

* includes indefinite sentences

Note: 'life' sentences not included in total mean and median calculations.

Aggregate sentence – Is determined as the period between the most recent full-time discharge date (as at 30 June 2016) and the date of reception for the episode.

Most serious offence – As recorded from information derived from IOMS and IJIS.

- There were 2,572 sentenced episode commencements during 2015-16, 2% less than in 2014-15. This includes 264 people who were on remand on 30 June 2015 who became sentenced within the same episode during the following 12 months.
- These sentenced episode commencements relate to 2,253 distinct persons. Of these, 734 (33%) commenced an adult sentenced episode in the previous year (2014-15).

- 'Acts intended to cause injury' was the most common offence type for sentences commencing in 2015-16 comprising 46% of the commencements. This was followed by 'offences against justice procedures, government security and government operations' (22%) and 'traffic and vehicle regulatory offences' (8%).
- 'Murder', 'attempted murder' and 'manslaughter and driving causing death' on average received the longest aggregate sentences of life and 3,242 days. They were followed by 'sexual assault and related offences' which had an average aggregate sentence of almost 5 years.
- Two people commenced a life sentence for murder during 2015-16.
- 64% of the sentenced episode commencements had an aggregate sentence of less than 6 months. The average aggregate sentence for sentenced episode commencements was 284 days, which is 17 days more than for the previous year.
- Indigenous people represented 90% of the sentenced episode commencements. The average aggregate sentence length for Indigenous prisoners was 248 days, 36 days less than the average for all persons.

Table 21 Adult sentenced episodes held by aggregate sentence, offence and Indigenous status.

Most Serious Offence		Aggregate Length											2015-16 Total	2014-15		
		Months				Years				Days				Total	mean	
		0<1	1<3	3<6	6<12	1<2	2<5	5<10	10+	Life*	mean	median				
Homicide and related offences																
Murder	All	-	-	-	-	-	-	-	-	-	44	life	life	44	48	life
	Indigenous	-	-	-	-	-	-	-	-	-	21	life	life	21	25	life
Attempted murder	All	-	-	-	-	-	-	-	-	-	3	life	life	3	2	life
	Indigenous	-	-	-	-	-	-	-	-	-	3	life	life	3	2	life
Manslaughter and driving causing death	All	-	-	-	-	-	5	23	26	1	3611	3468	55	60	3539	
	Indigenous	-	-	-	-	-	5	21	25	1	3639	3557	52	57	3561	
Acts intended to cause injury																
All	All	22	253	533	357	259	182	42	5	6	397	183	1659	1727	370	
	Indigenous	21	239	512	336	248	165	32	2	6	374	183	1561	1626	346	
Sexual assault and related offences																
All	All	-	-	2	-	13	37	68	38	3	2582	2375	161	174	2579	
	Indigenous	-	-	1	-	12	21	55	31	2	2688	2512	122	133	2593	
Dangerous or negligent acts endangering persons																
Driving under the influence of alcohol or drugs	All	-	-	2	3	-	-	-	-	-	196	211	5	6	132	
	Indigenous	-	-	2	3	-	-	-	-	-	196	211	5	5	140	
Dangerous or negligent driving	All	2	5	18	11	4	8	3	-	-	487	183	51	45	462	
	Indigenous	2	4	16	9	4	7	1	-	-	402	177	43	38	382	
Other Dangerous Acts	All	-	3	1	16	28	18	4	1	-	737	589	71	60	749	
	Indigenous	-	3	1	16	24	9	3	1	-	690	543	57	50	751	
Abduction, harassment and other offences against the person																
All	All	1	1	2	3	1	1	-	-	-	339	243	9	14	345	
	Indigenous	1	1	2	3	-	1	-	-	-	320	188	8	10	207	
Robbery, extortion and related offences																
All	All	-	3	1	-	7	26	9	3	1	1435	1188	50	38	1342	
	Indigenous	-	1	1	-	7	19	7	1	1	1331	1095	37	28	1251	
Unlawful entry with intent, burglary, break and enter																
All	All	3	21	75	54	41	17	4	-	-	333	190	215	212	304	
	Indigenous	3	21	73	51	36	14	4	-	-	325	183	202	196	297	
Theft and related offences																
Illegal use of motor vehicle	All	2	10	13	2	1	-	-	-	-	123	110	28	29	171	
	Indigenous	2	9	9	1	1	-	-	-	-	116	98	22	21	179	
Theft other	All	15	10	9	6	2	4	2	-	-	290	86	48	41	251	
	Indigenous	13	10	6	3	1	1	1	-	-	157	61	35	30	111	
Fraud, deception and related offences																
All	All	-	4	3	6	1	7	1	-	-	611	280	22	12	762	
	Indigenous	-	2	-	4	-	-	-	-	-	198	215	6	4	197	
Illicit drug offences																
All	All	9	12	19	12	26	53	11	5	2	911	548	149	105	992	
	Indigenous	4	8	11	8	12	5	1	-	-	379	208	49	31	404	
Prohibited and regulated weapons and explosive offences																
All	All	6	8	9	3	1	-	-	-	-	116	90	27	19	99	
	Indigenous	6	8	9	3	1	-	-	-	-	116	90	27	19	99	
Property damage and environmental pollution																
All	All	15	18	24	10	8	20	1	-	-	391	132	96	66	389	
	Indigenous	15	18	24	9	5	16	1	-	-	353	122	88	61	385	
Public order offences																
All	All	5	3	3	1	3	2	-	-	-	334	153	17	29	187	
	Indigenous	4	3	1	1	2	-	-	-	-	172	59	11	23	131	
Traffic and vehicle regulatory offences																
Driving licence offences	All	13	43	24	14	1	-	-	-	-	107	90	95	97	102	
	Indigenous	11	41	24	14	1	-	-	-	-	109	90	91	97	102	
Exceeding the prescribed content of alcohol	All	8	50	81	34	2	1	-	-	-	138	121	176	199	137	
	Indigenous	6	49	79	34	2	1	-	-	-	140	121	171	196	137	
Traffic other	All	-	-	-	-	-	-	-	-	-	-	-	0	3	27	
	Indigenous	-	-	-	-	-	-	-	-	-	-	-	0	2	16	
Offences against justice procedures, gov't security and gov't operations																
Breach of justice order	All	286	170	84	64	48	29	1	-	4	146	44	686	695	176	
	Indigenous	264	156	78	57	43	24	1	-	2	141	43	625	636	170	
Immigration offences	All	-	-	-	-	-	-	-	-	-	-	-	0	2	2519	
	Indigenous	-	-	-	-	-	-	-	-	-	-	-	0	0	-	
Justice other	All	1	2	1	1	2	4	-	-	-	609	576	11	8	509	
	Indigenous	-	1	-	-	2	-	-	-	-	435	576	3	5	78	
Miscellaneous offences																
All	All	-	-	1	-	-	-	-	-	-	181	181	1	2	135	
	Indigenous	-	-	1	-	-	-	-	-	-	181	181	1	1	181	
Total																
All	All	388	616	905	597	448	414	169	78	64	507	180	3679	3693	497	
	Indigenous	352	574	850	552	401	288	127	60	36	453	167	3240	3296	443	

* includes indefinite sentences

Note: 'life' sentences not included in total mean and median calculations.

Aggregate sentence – Is determined as the period between the most recent full-time discharge date (as at 30 June 2016) and the date of reception for the episode.

Most serious offence – As recorded from information derived from IOMS and IJIS.

- There were 3,679 episodes which commenced prior to or during 2015-16 and were sentenced prior to and continued in 2015-16 or became sentenced during 2015-16; 88% of these episodes related to Indigenous prisoners.
- The average aggregate sentence for those held during 2015-16 was 507 days and the median was 180 days.
- During 2015-16, there were 64 episodes in which the aggregate sentence for the prisoner was either a life or indefinite sentence; **murder** was the most serious offence for 44 of these episodes.

Table 22 Adult sentenced episodes commenced by aggregate sentence, offence and gender.

Most Serious Offence		Aggregate Length										2015-16		2014-15	
		Months				Years				Days		Total	Total	Mean	
		0<-1	1<-3	3<-6	6<-12	1<-2	2<-5	5<-10	10 +	Life*	mean				median
Homicide and related offences															
Murder	All	-	-	-	-	-	-	-	-	2	life	life	2	2	life
	Female	-	-	-	-	-	-	-	-	1	life	life	1	0	-
Attempted murder	All	-	-	-	-	-	-	-	-	-	-	-	0	1	life
	Female	-	-	-	-	-	-	-	-	-	-	-	0	1	life
Manslaughter and driving causing death	All	-	-	-	-	-	1	4	2	-	3242	3097	7	13	3671
	Female	-	-	-	-	-	-	1	-	-	2555	2555	1	4	2691
Acts intended to cause injury															
	All	22	226	444	250	161	66	8	-	1	267	177	1178	1216	258
	Female	5	21	31	22	15	5	-	-	-	260	181	99	103	255
Sexual assault and related offences															
	All	-	-	1	-	7	18	10	6	-	1810	1459	42	48	1463
	Female	-	-	-	-	-	-	-	-	-	-	-	0	0	-
Dangerous or negligent acts endangering persons															
Driving under the influence of alcohol or drugs	All	-	-	2	2	-	-	-	-	-	192	193	4	5	128
	Female	-	-	-	-	-	-	-	-	-	-	-	0	1	62
Dangerous or negligent driving	All	2	4	14	6	3	7	1	-	-	427	177	37	34	238
	Female	-	3	-	-	2	-	-	-	-	265	91	5	3	120
Other Dangerous Acts	All	-	2	1	13	19	10	1	-	-	574	547	46	39	591
	Female	-	-	-	2	-	-	1	-	-	806	317	3	6	668
Abduction, harassment and other offences against the person															
	All	1	-	2	1	1	-	-	-	-	198	133	5	13	362
	Female	-	-	-	-	-	-	-	-	-	-	-	0	0	-
Robbery, extortion and related offences															
	All	-	3	-	-	5	12	3	2	-	1436	1195	25	15	866
	Female	-	1	-	-	-	-	-	-	-	60	60	1	0	-
Unlawful entry with intent, burglary, break and enter															
	All	3	20	61	36	29	9	1	-	-	276	182	159	157	217
	Female	-	2	4	2	2	-	-	-	-	229	181	10	12	190
Theft and related offences															
Illegal use of motor vehicle	All	2	8	9	1	1	-	-	-	-	117	106	21	24	125
	Female	-	-	-	-	-	-	-	-	-	-	-	0	5	148
Theft other	All	15	8	9	5	2	2	-	-	-	205	80	41	34	145
	Female	1	3	-	1	-	-	1	-	-	385	80	6	5	49
Fraud, deception and related offences															
	All	-	3	3	2	1	4	-	-	-	519	202	13	11	633
	Female	-	2	1	-	1	3	-	-	-	655	455	7	3	375
Illicit drug offences															
	All	9	12	18	10	17	35	5	1	-	674	481	107	79	716
	Female	1	1	5	1	3	6	-	-	-	586	410	17	11	672
Prohibited and regulated weapons and explosive offences															
	All	6	6	8	2	1	-	-	-	-	108	90	23	16	95
	Female	-	1	2	-	-	-	-	-	-	96	113	3	0	-
Property damage and environmental pollution															
	All	15	15	22	6	3	12	-	-	-	295	117	73	57	278
	Female	2	3	5	-	1	-	-	-	-	137	117	11	9	206
Public order offences															
	All	5	3	2	1	1	1	-	-	-	188	59	13	26	200
	Female	-	-	-	-	-	-	-	-	-	-	-	0	3	248
Traffic and vehicle regulatory offences															
Driving licence offences	All	13	38	19	10	1	-	-	-	-	99	86	81	83	92
	Female	-	9	2	1	-	-	-	-	-	94	62	12	15	100
Exceeding the prescribed content of alcohol	All	7	41	63	24	2	-	-	-	-	128	121	137	165	125
	Female	1	3	12	5	-	-	-	-	-	152	151	21	26	100
Traffic other	All	-	-	-	-	-	-	-	-	-	-	-	0	3	27
	Female	-	-	-	-	-	-	-	-	-	-	-	0	1	48
Offences against justice procedures, gov't security and gov't operations															
Breach of justice order	All	274	152	55	38	23	5	-	-	2	84	29	549	577	107
	Female	30	21	4	7	4	-	-	-	-	89	31	66	59	143
Immigration offences	All	-	-	-	-	-	-	-	-	-	-	-	-	0	-
	Female	-	-	-	-	-	-	-	-	-	-	-	0	0	-
Justice other	All	1	2	1	1	2	2	-	-	-	425	213	9	6	357
	Female	-	-	-	-	-	-	-	-	-	-	-	0	0	-
Miscellaneous offences															
	All	-	-	-	-	-	-	-	-	-	-	-	0	2	135
	Female	-	-	-	-	-	-	-	-	-	-	-	0	0	-
Total	All	375	543	734	408	279	182	35	11	5	284	134	2572	2626	267
	Female	40	70	66	41	27	15	3	0	1	241	121	263	269	262

* includes indefinite sentences

Note: 'life' sentences not included in total mean and median calculations.

Aggregate sentence – Is determined as the period between the most recent full-time discharge date (as at 30 June 2016) and the date of reception for the episode.

Most serious offence – As recorded from information derived from IOMS and IJIS.

- In 2015-16, there were 263 sentence commencements for adult females, 2% less than the previous year. Adult female commencements represented 10% of all sentence commencements for all adults during this period.

- The average aggregate sentence length for females was 43 days less than the average for all adults.
- 'Acts intended to cause injury' was the most common offence for females who commenced a sentence in 2015-16 (38% of commencements), followed by 'offences against justice procedures, government security and government operations' (25%) and 'traffic and vehicle regulatory offences' (13%).

Figure 9 Distribution of aggregate sentence commencements for adults and youths according to selected offences and age group, 2015-16

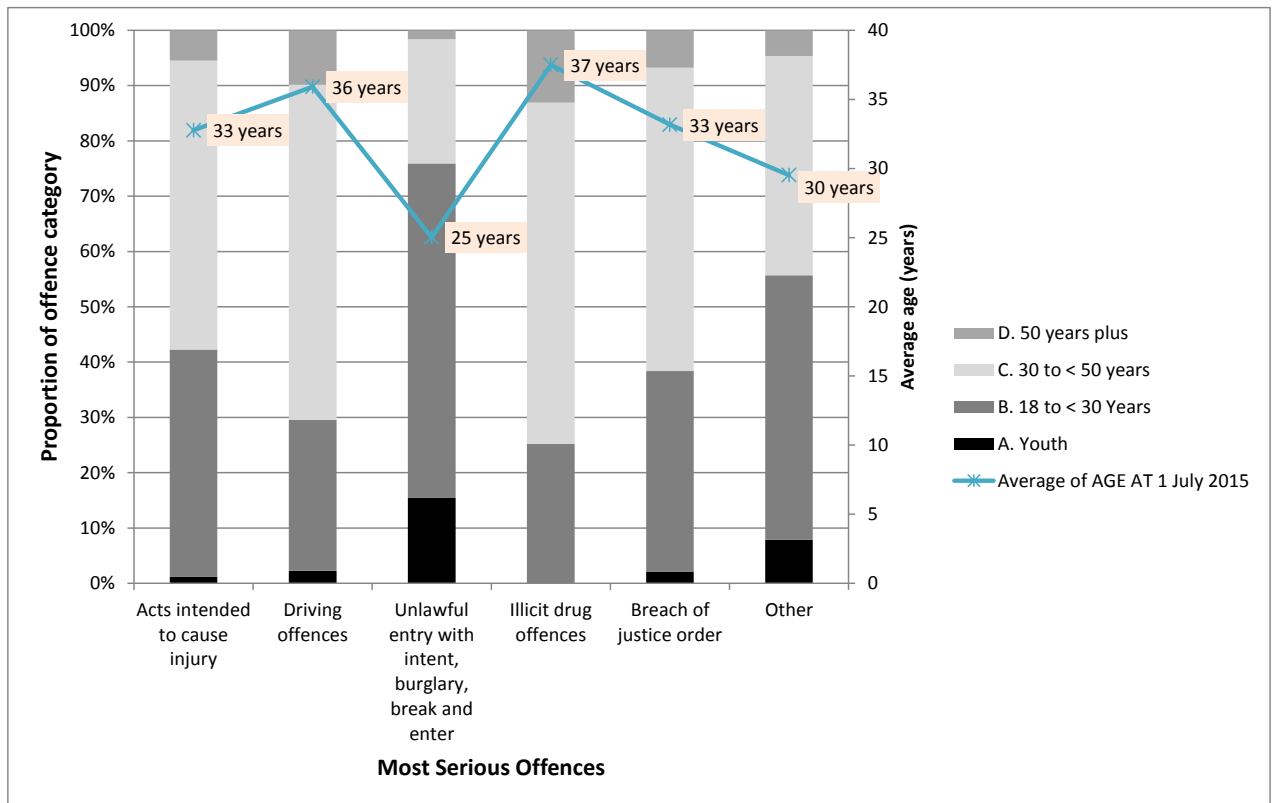


Table 23 Adult and youth sentenced episode commencements by aggregate sentence and offence.

Most Serious Offence		Aggregate Length										2015-16 Total	2014-15 Total	mean		
		Months				Years				Days						
		0<-1	1<-3	3<-6	6<-12	1<-2	2<-5	5<-10	10 +	Life*	mean	median				
Homicide and related offences																
Murder	Adult	-	-	-	-	-	-	-	-	2	life	life	2	2	life	
	Youth	-	-	-	-	-	-	-	-	-	-	-	0	0	-	
Attempted murder	Adult	-	-	-	-	-	-	-	-	-	-	-	0	1	life	
	Youth	-	-	-	-	-	-	-	-	-	-	-	0	0	-	
Manslaughter and driving causing death	Adult	-	-	-	-	-	1	4	2	-	3242	3097	7	13	3671	
	Youth	-	-	-	-	-	-	-	-	-	-	-	0	1	1737	
Acts intended to cause injury																
	Adult	22	226	444	250	161	66	8	-	1	267	177	1178	1216	258	
	Youth	-	2	4	1	-	-	-	-	-	145	122	7	11	250	
Sexual assault and related offences																
	Adult	-	-	1	-	7	18	10	6	-	1810	1459	42	48	1463	
	Youth	-	-	-	-	1	1	1	-	-	1336	1415	3	2	941	
Dangerous or negligent acts endangering persons																
Driving under the influence of alcohol or drugs	Adult	-	-	2	2	-	-	-	-	-	192	193	4	5	128	
	Youth	-	-	-	-	-	-	-	-	-	-	-	0	1	181	
Dangerous or negligent driving	Adult	2	4	14	6	3	7	1	-	-	427	177	37	34	238	
	Youth	-	2	2	-	1	-	-	-	-	182	121	5	2	148	
Other Dangerous Acts	Adult	-	2	1	13	19	10	1	-	-	574	547	46	39	591	
	Youth	-	-	-	-	-	-	-	-	-	-	-	0	1	180	
Abduction, harassment and other offences against the person																
	Adult	1	-	2	1	1	-	-	-	-	198	133	5	13	362	
	Youth	-	-	-	-	-	-	-	-	-	-	-	0	0	-	
Robbery, extortion and related offences																
	Adult	-	3	-	-	5	12	3	2	-	1436	1195	25	15	866	
	Youth	-	-	-	-	-	-	-	-	-	-	-	0	1	730	
Unlawful entry with intent, burglary, break and enter																
	Adult	3	20	61	36	29	9	1	-	-	276	182	159	157	217	
	Youth	1	8	12	5	1	1	-	-	-	166	122	28	28	230	
Theft and related offences																
Illegal use of motor vehicle	Adult	2	8	9	1	1	-	-	-	-	117	106	21	24	125	
	Youth	2	5	1	3	-	-	-	-	-	121	76	11	6	63	
Theft other	Adult	15	8	9	5	2	-	2	-	-	205	80	41	34	145	
	Youth	-	-	-	-	-	-	-	-	-	-	-	0	1	32	
Fraud, deception and related offences																
	Adult	-	3	3	2	1	4	-	-	-	519	202	13	11	633	
	Youth	-	-	-	-	-	-	-	-	-	-	-	0	0	-	
Illicit drug offences																
	Adult	9	12	18	10	17	35	5	1	-	674	481	107	79	716	
	Youth	-	-	-	-	-	-	-	-	-	-	-	0	0	-	
Prohibited and regulated weapons and explosive offences																
	Adult	6	6	8	2	1	-	-	-	-	108	90	23	16	95	
	Youth	-	-	-	-	-	-	-	-	-	-	-	0	0	-	
Property damage and environmental pollution																
	Adult	15	15	22	6	3	12	-	-	-	295	117	73	57	278	
	Youth	2	1	1	-	1	-	-	-	-	160	43	5	2	166	
Public order offences																
	Adult	5	3	2	1	1	1	-	-	-	188	59	13	26	200	
	Youth	-	-	-	-	-	-	-	-	-	-	-	0	0	-	
Traffic and vehicle regulatory offences																
Driving licence offences	Adult	13	38	19	10	1	-	-	-	-	99	86	81	83	92	
	Youth	-	-	-	-	-	-	-	-	-	-	-	0	0	-	
Exceeding the prescribed content of alcohol	Adult	7	41	63	24	2	-	-	-	-	128	121	137	165	125	
	Youth	-	-	-	-	-	-	-	-	-	-	-	0	0	-	
Traffic other	Adult	-	-	-	-	-	-	-	-	-	-	-	0	3	27	
	Youth	-	-	-	-	-	-	-	-	-	-	-	0	0	-	
Offences against justice procedures, gov't security and gov't operations																
Breach of justice order	Adult	274	152	55	38	23	5	-	-	2	84	29	549	577	107	
	Youth	1	4	4	1	-	1	-	-	-	213	122	11	13	48	
Immigration offences	Adult	-	-	-	-	-	-	-	-	-	-	-	0	0	-	
	Youth	-	-	-	-	-	-	-	-	-	-	-	0	0	-	
Justice other	Adult	1	2	1	1	2	2	-	-	-	425	213	9	6	357	
	Youth	-	-	-	-	-	-	-	-	-	-	-	0	0	-	
Miscellaneous offences																
	Adult	-	-	-	-	-	-	-	-	-	-	-	0	2	135	
	Youth	-	-	-	-	-	-	-	-	-	-	-	0	0	-	
Total		Adult	375	543	734	408	279	182	35	11	5	284	134	2572	2626	267
		Youth	6	22	24	11	4	6	1	0	0	247	122	74	69	225

* includes indefinite sentences

Note: 'life' sentences not included in total mean and median calculations.

Aggregate sentence – Is determined as the period between the most recent full-time discharge date (as at 30 June 2016) and the date of reception for the episode.

Most serious offence – As recorded from information derived from IOMS and IJIS.

- There were 74 sentenced episode commencements for youths during 2015-16 which is 7% more than in 2014-15.
- These sentenced episode commencements relate to 59 distinct persons.

- 'Unlawful entry with intent, burglary, break and enter' was the most common offence type for sentences commencing in 2015-16 comprising 38% of the commencements
- 63 (85%) of the youth sentence commencements had an aggregate sentence of less than 12 months.

YOUTH DETAINEES DURING 2015-16

Table 24 Youth monthly daily average by sentence status.

	Alice Springs Youth Detention Centre		Don Dale Youth Detention Centre		All		Total	
	Sent	Unsent	Sent	Unsent	Sent	Unsent	2015-16	2014-15
	July	6	13	5	18	11	31	42
August	4	11	8	17	12	28	41	40
September	4	8	9	22	13	30	43	39
October	3	8	9	21	12	29	41	34
November	1	8	12	30	13	38	50	37
December	2	8	14	32	16	40	56	44
January	2	8	14	36	16	44	60	45
February	1	6	14	35	16	41	57	44
March	2	6	18	32	20	38	58	42
April	3	8	17	28	20	36	56	42
May	3	6	13	21	16	27	43	44
June	3	10	12	17	14	27	41	43
<i>Indigenous 2015-16</i>	3	8	11	24	14	32	46	39
Total 2015-16	3	8	12	26	15	34	49	
Total 2014-15	4	11	7	19	11	30		42

Note:

The figures represent the averages rounded to the nearest integer.

- The 2015-16 daily average increased by 17% compared with the previous year.
- On average, 95% of the detainee population was Indigenous.
- On average, 30% of the detainees were sentenced and 70% were unsentenced.

Table 25 Youth releases by institution, release reason and Indigenous status.

Release Reason	Alice Springs Youth Detention Centre		Don Dale Youth Detention Centre		All		Total	
	Indigenous	Non-Indig	Indigenous	Non-Indig	Indigenous	Non-Indig	2015-16	2014-15
	Expiry Of Sent (Full Term)	15	0	13	0	28	0	28
Home Detention	6	0	1	0	7	0	7	1
Other Discharge From Custody	33	0	136	6	169	6	175	154
Parole	5	0	4	0	9	0	9	2
Supervised Bond	59	0	148	23	207	23	230	188
Unknown - Discharge From Custody	52	0	25	1	77	1	78	92
Total 2015-16	170	0	327	30	497	30	527	
Total 2014-15	142	2	290	27	432	29		461
Centre Total 2015-16	170		357		527			
Centre Total 2014-15	144		317		461			

Other Discharge From Custody – These are predominantly youths released from court, ie bailed, released following finalisation of charges. Also includes releases on non-supervised bonds and community work orders.

- The number of youth releases increased by 14% from the previous year.
- There was a 22% increase in the number of youth released to 'supervised bond' in 2015-16 compared with the previous year.

Table 26 Youth orders and distinct episode commencements by Indigenous status and gender.

Order Type	Indigenous		Non-Indigenous		Total	
	Male	Female	Male	Female	2015-16	2014-15
Sentenced/Detention	89	15	7	0	111	85
Fine Default	0	0	0	0	0	0
Remand	394	98	23	6	521	457
Immigration	0	0	0	0	0	0
Total 2015-16	483	113	30	6	632	
Total 2014-15	438	69	33	2		542
Distinct episodes 2015-16	400	100	24	6	530	
Distinct episodes 2014-15	376	56	28	2		462

Note: It is common for more than one type of order to commence during an episode; consequently, the total number of order type commencements may exceed the number of distinct episodes.

- Remand orders comprised 82% of order type commencements for youths in 2015-16.
- During 2015-16, 75% of the distinct episodes commenced were for Indigenous male youths.

Table 27 Distinct youths received by last known address, age and Indigenous status.

Last Known Address	Indigenous Status	Age Group (Years)			Total	
		10-14	15-16	17	2015-16	2014-15
Ali Curung	All	1	1	2	4	7
	Indigenous	1	1	2	4	7
Alice Springs	All	18	26	11	56	59
	Indigenous	18	26	11	56	58
Alyangula	All	0	9	2	11	6
	Indigenous	0	9	2	11	6
Avon Downs	All	0	0	1	1	1
	Indigenous	0	0	1	1	1
Batchelor	All	1	0	0	1	1
	Indigenous	1	0	0	1	1
Borrooloola	All	0	3	0	3	3
	Indigenous	0	3	0	3	3
Casuarina	All	17	14	11	42	31
	Indigenous	15	11	7	33	28
Daly River	All	0	0	2	2	0
	Indigenous	0	0	2	2	0
Darwin	All	6	7	2	15	19
	Indigenous	6	6	2	14	16
Elliot	All	0	0	1	1	2
	Indigenous	0	0	1	1	2
Harts Range	All	0	0	0	0	5
	Indigenous	0	0	0	0	5
Hermannsburg	All	1	1	3	5	1
	Indigenous	1	1	3	5	1
Humpty Doo	All	2	1	0	3	2
	Indigenous	2	1	0	3	1
Jabiru	All	0	0	0	0	1
	Indigenous	0	0	0	0	1
Katherine	All	5	10	4	19	7
	Indigenous	5	10	4	19	7
Kintore	All	0	0	0	0	1
	Indigenous	0	0	0	0	1
Lajamanu	All	0	0	0	0	1
	Indigenous	0	0	0	0	1
Maningrida	All	0	1	2	3	5
	Indigenous	0	1	2	3	5
Mataranka	All	0	1	0	1	0
	Indigenous	0	1	0	1	0
Ngukurr	All	0	4	3	7	3
	Indigenous	0	4	3	7	3
Nhulunbuy	All	0	2	0	2	5
	Indigenous	0	2	0	2	5
Oenpelli	All	0	2	0	2	0
	Indigenous	0	2	0	2	0
Palmerston	All	23	12	5	40	30
	Indigenous	22	11	5	38	28
Papunya	All	0	0	1	1	1
	Indigenous	0	0	1	1	1
Pirlangimpi	All	0	0	0	0	1
	Indigenous	0	0	0	0	1
Tennant Creek	All	4	4	0	8	7
	Indigenous	4	4	0	8	7
Ti Tree	All	0	0	1	1	1
	Indigenous	0	0	1	1	1
Timber Creek	All	1	1	0	2	0
	Indigenous	1	1	0	2	0
Tiwi Islands	All	0	1	0	1	0
	Indigenous	0	1	0	1	0
Wadeye	All	0	1	1	2	8
	Indigenous	0	1	1	2	8
Wurrumiyanga	All	0	1	2	3	2
	Indigenous	0	1	2	3	2
Yuendumu	All	1	4	2	7	7
	Indigenous	1	4	2	7	7
Yulara	All	1	0	0	1	0
	Indigenous	1	0	0	1	0
Interstate	All	0	0	0	0	2
	Indigenous	0	0	0	0	0
Unknown	All	1	5	4	10	13
	Indigenous	1	5	3	9	10
Total 2015-16	All	82	111	60	254	
	Indigenous	79	106	55	241	
Total 2014-15	All	66	99	66		232
	Indigenous	62	91	63		217

Last known address – As recorded in IOMS and aggregated into Police districts.

Age – In years at first reception.

Included in the total for 2015-16 and 2014-15, is one youth offender who was 18 at time of reception.

- 22% of distinct youths received in 2015-16 came from the Alice Springs district. This was followed by Casuarina at 17% and Palmerston 16%.

Table 28 Youth receptions by offence.

Most Serious Offence	Age Group (Years)			Total	
	10-14	15-16	17	2015-16	2014-15
Homicide and related offences					
Murder	0	0	0	0	1
Attempted Murder	0	0	0	0	0
Manslaughter and driving causing death	0	0	0	0	0
Acts intended to cause injury	78	85	43	206	168
Sexual assault and related offences	7	9	4	20	16
Dangerous or negligent acts endangering persons					
Driving under the influence of alcohol or other substance	0	0	0	0	1
Dangerous or negligent driving of a vehicle	12	9	3	24	15
Other	7	1	1	9	7
Abduction, harassment and other offences against the person	0	1	0	1	5
Robbery, extortion and related offences	14	10	4	28	29
Unlawful entry with intent/burglary, break and enter	79	58	17	154	125
Theft and related offences					
Motor vehicle theft and related offences	10	5	1	16	12
Other	10	7	2	19	14
Fraud, deception and related offences	0	0	0	0	0
Illicit drug offences	0	3	0	3	4
Prohibited and regulated weapons and explosive offences	1	1	0	2	14
Property damage and environmental pollution	3	6	4	13	16
Public order offences	1	1	0	2	0
Traffic and vehicle regulatory offences					
Driving licence offences	0	0	1	1	0
Exceeding the prescribed content of alcohol	0	0	0	0	2
Other	0	0	0	0	0
Offences against justice procedures, gov't security and gov't operations					
Breach of justice order	23	7	1	31	33
Other	0	0	0	0	0
Miscellaneous offences	0	0	0	0	0
Total 2015-16	245	203	81	530	
Total 2014-15	192	173	96		462

Most serious offence – As recorded in IOMS.

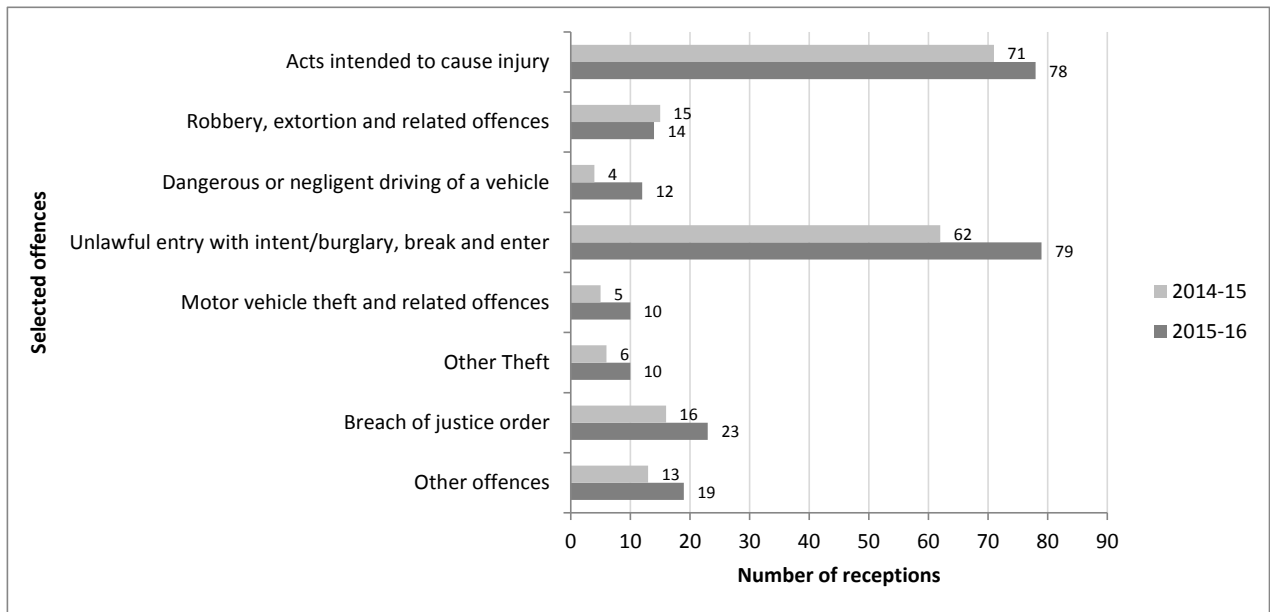
Age – In years at reception.

Note: A youth may commence several short remand episodes for the same offences without being convicted.

The total figure for 2015-16 includes one youth who was aged 18 at time of reception and 2014-15 includes one youth offender who was 18 at time of reception.

- 'Acts intended to cause injury' was the most common offence type for youth receptions in 2015-16, comprising 39% of receptions. This was followed by 'unlawful entry with intent/burglary, break and enter', comprising 29% of receptions.
- The offence group 'dangerous or negligent driving of a vehicle' increased by 60% (9 offences) from 2015-16.
- Youths aged 10-14 comprised 46% of total youth receptions during 2015-16 and there was a 22% increase in the number of receptions of youth in this age group compared with the previous year. The number of receptions for this age group for the offence of 'unlawful entry with intent/burglary, break and enter' increased from 62 to 79 (27% increase).

Figure 10 Two year comparison of most serious offences for receptions of youth aged 10 to 14 years



COMMUNITY CORRECTIONS CASELOAD AS AT 30 JUNE 2016

Table 29 Community Corrections adult caseload by office, Indigenous status and program.

Office		Program								Total	
		Parole	Probation	Home Detention	Community Based Order	Community Custody Order	Community Work Order	Final Supervision Order	Mental Impairment Order	2016	2015
Alice Springs	All	25	138	3	0	11	26	0	3	206	217
	Indigenous	19	112	2	0	11	21	0	3	168	178
Casuarina	All	20	87	0	0	0	11	0	0	118	125
	Indigenous	10	39	0	0	0	8	0	0	57	66
Groote Eylandt	All	10	39	0	0	4	6	0	0	59	59
	Indigenous	10	39	0	0	4	6	0	0	59	59
Katherine	All	12	123	2	0	1	37	0	0	175	192
	Indigenous	11	109	1	0	1	34	0	0	156	176
Nhulunbuy	All	4	57	0	0	1	14	0	0	76	56
	Indigenous	3	54	0	0	1	14	0	0	72	52
Palmerston	All	23	159	7	0	0	34	0	1	224	176
	Indigenous	7	98	2	0	0	25	0	0	132	83
Tennant Creek	All	3	63	1	0	3	8	0	0	78	69
	Indigenous	2	58	1	0	3	7	0	0	71	61
Wadeye	All	1	33	0	0	0	5	0	0	39	39
	Indigenous	1	33	0	0	0	5	0	0	39	39
Total 30 June 2016	All	98	699	13	0	20	141	0	4	975	
	Indigenous	63	542	6	0	20	120	0	3	754	
Total 30 June 2015	All	84	659	7	2	42	136	1	2		933
	Indigenous	64	495	0	2	39	112	1	1		714

Note:

Adult status is based on age at commencement of program.

Figures are distinct by program thus the total figure does not represent distinct clients, as a client may have different programs active simultaneously.

Active orders counted only, i.e. no orders in breach included.

- There was a 5% increase in the adult caseload as at 30 June 2016 compared with the same time the previous year.
- Indigenous persons represented 77% of the adult caseload as at 30 June 2016.
- There was a 36% increase in programs for the Nhulunbuy office and a 27% increase in programs for the Palmerston office.
- Community Custody Orders decreased by 52% whilst Home Detention Orders increased by 86% compared with the same time the previous year.

Table 30 Community Corrections youth caseload by office, Indigenous status and program.

Office		Program				Total	
		Parole	Probation	Community Work Order	Youth Alternative Home Detention Order	2016	2015
Alice Springs	All	1	35	14	0	50	34
	Indigenous	1	35	13	0	49	32
Casuarina	All	0	11	8	0	19	35
	Indigenous	0	8	5	0	13	25
Groote Eylandt	All	0	7	4	0	11	12
	Indigenous	0	7	4	0	11	12
Katherine	All	0	8	7	0	15	17
	Indigenous	0	8	7	0	15	17
Nhulunbuy	All	0	3	0	0	3	4
	Indigenous	0	3	0	0	3	4
Palmerston	All	0	17	10	1	28	25
	Indigenous	0	17	9	1	27	23
Tennant Creek	All	0	5	3	0	8	6
	Indigenous	0	5	3	0	8	6
Wadeye	All	0	3	1	0	4	4
	Indigenous	0	3	1	0	4	4
Total 30 June 2016	All	1	89	47	1	138	
	Indigenous	1	86	42	1	130	
Total 30 June 2015	All	4	75	58	0		137
	Indigenous	3	68	52	0		123

Note:

Youth status is based on age at commencement of program.

Figures are distinct by program thus the total figure does not represent distinct clients, as a client may have different programs active simultaneously.

Active orders counted only ie no orders in breach included.

- There was a 1% increase in the youth caseload as at 30 June 2016 compared with the same time the previous year.
- Indigenous persons represented 94% of the youth caseload as at 30 June 2016.
- Youth Probation represented the most common type of program.
- There was a 47% increase in programs for the Alice Springs office and a 46% decrease in programs for the Casuarina office.

COMMUNITY CORRECTIONS TURNOVER DURING 2015-16

Table 31 Community-based program completions.

Program	Completions			Total	Success Rate	
	Successful	Unsuccessful	Other		2015-16	2014-15
Community work orders						
Adult	261	93	4	358	74%	74%
Youth	66	52	0	118	56%	59%
Home detention/Youth alternative detention						
Adult	19	3	1	23	86%	86%
Youth	3	4	0	7	43%	na
Parole						
Adult	62	47	12	121	57%	60%
Youth	3	1	0	4	75%	0%
Probation						
Adult	552	186	15	753	75%	68%
Youth	62	70	1	133	47%	60%
Community custody order						
Adult	69	21	0	90	77%	55%
Community based order						
Adult	1	1	0	2	50%	50%
Total 2015-16	1098	478	33	1609	70%	
Adult	964	351	32	1347	73%	
Youth	134	127	1	262	51%	
Total 2014-15	1031	497	21	1549		67%

Other – Includes interstate transfers, withdrawal of order and deaths.

Success rate – Is expressed as a proportion of successful and unsuccessful completions only.

na – not applicable

- The success rate for the completion of adult community custody orders increased noticeably from 55% to 77%.

Table 32 Community-based program commencements by Indigenous status and gender.

Program	Indigenous		Non-Indigenous		All		Total	
	Female	Male	Female	Male	Female	Male	2015-16	2014-15
Community work order								
Adult	61	281	9	42	70	323	393	412
Youth	21	82	3	11	24	93	117	141
Home detention/Youth alternative detention								
Adult	4	8	5	11	9	19	28	23
Youth	0	6	0	0	0	6	6	4
Parole								
Adult	7	91	3	31	10	122	132	127
Youth	0	2	0	0	0	2	2	4
Probation								
Adult	146	629	35	140	181	769	950	801
Youth	26	135	0	5	26	140	166	123
Community custody order								
Adult	17	59	1	2	18	61	79	86
Community based order								
Adult	0	0	0	0	0	0	0	2
Final supervision order								
Adult	0	1	0	0	0	1	1	0
Total 2015-16	282	1294	56	242	338	1536	1874	
Adult	235	1069	53	226	288	1295	1583	
Youth	47	225	3	16	50	241	291	
Total 2014-15	261	1176	40	246	301	1422		1723

- There was an 11% increase in the number of distinct persons commencing a community-based program in 2015-16 compared with the previous year.
- The number of community work orders (adult and youth) decreased by 8% in 2015-16 compared with 2014-15, whilst the number of commencements of a probation program (adults and youth) increased by 17%.

Table 33 Distinct persons commencing a community-based program by Indigenous status and gender.

	Indigenous		Non-Indigenous		All		Total	
	Female	Male	Female	Male	Female	Male	2015-16	2014-15
Distinct Adults	221	998	46	215	267	1213	1480	1330
Distinct Youths	35	143	3	10	38	153	191	176
Distinct Persons 2015-16	256	1139	49	225	305	1364	1669	
Distinct Persons 2014-15	235	1019	35	214	270	1233		1503

Note: The sum of distinct adults and youths may differ to the total distinct persons, as a person could appear as both an adult and youth in the same year.

- Females represented 18% of the distinct persons who commenced a community-based program in 2015-16.

APPENDIX 1

OFFENCE CLASSIFICATIONS

The offences used in this report are based on the Australian and New Zealand Standard Offence Classification. Offences are grouped into Division and Subdivision level and are as follows:

Offences Against the person

Homicide and related offences

Murder
Attempted murder
Manslaughter and driving causing death

Acts intended to cause injury

Assault
Other acts intended to cause injury

Sexual assault and related offences

Sexual assault
Non-assaultive sexual offences

Dangerous or negligent acts endangering persons

Dangerous or negligent operations of a vehicle
Other dangerous or negligent acts endangering persons

Abduction, harassment and other offences against the person

Abduction and kidnapping
Deprivation of liberty/False imprisonment
Harassment and threatening behaviour

Robbery, extortion and related offences

Robbery
Blackmail and extortion

Property Offences

Unlawful entry with intent/Burglary, break and enter

Unlawful entry with intent/Burglary, break and enter

Theft and related offences

Motor vehicle theft and related offences
Theft (except motor vehicles)
Receive or handle proceeds of crime
Illegal use of property (except motor vehicles)

Fraud, deception and related offences

Obtain benefit by deception
Forgery and counterfeiting
Deceptive business/government practices
Other fraud and deception offences

Property damage and environmental pollution

Property damage
Environmental pollution

Other Offences

Illicit drug offences

Import or export illicit drugs
Deal or traffic in illicit drugs
Manufacture or cultivate illicit drugs
Possess and/or use illicit drugs
Other illicit drug offences

Prohibited and regulated weapons and explosive offences

Prohibited weapons/Explosives offences
Regulated weapons/Explosives offences

Public order offences

Disorderly conduct
Regulated public order offences
Offensive conduct

Traffic and vehicle regulatory offences

Driver licence offences
Vehicle registration and roadworthiness offences
Regulatory driving offences (eg Exceeding the prescribed content of alcohol, Exceed legal speed limit)
Pedestrian offences

Offences against justice procedures, government security and government operations

Breach of custodial order offences
Breach of community-based orders
Breach of violence and non-violence orders
Offences against government operations
Offences against government security
Other offences against justice procedures

Miscellaneous offences

Defamation, libel and privacy offences
Public health and safety offences
Commercial/industry/financial regulation
Other miscellaneous offences